

# THE HOPI TRIBE



# Hopi Tribe Comprehensive Economic Development Strategy 2015

Prepared for:  
Hopi Tribe Office of Community  
Planning and Economic  
Development

U.S. Economic Development Administration Grant 2014

Prepared by:  
Joelynn Ashley, M.P.A., Consultant



**Hopi Tribal Council**

**Executive Branch**

Herman Honanie, Hopi Tribal Chairman  
Alfred Lomahquahu, Jr., Hopi Tribe Vice Chairman  
Robert Sumatzkuku, Tribal Treasurer  
Vernita Selestewa, Secretary  
Alfonso Sakeva, Sergeant at Arms

Village of Bakabi

Davis F. Pecusa  
Lamar Keevama  
Gail Poley

Village of Kykotsmovi

Alban Mooya, Jr.  
Norman Honanie  
Miona Kaping  
Nada Talayumptewa

Upper Village of  
Moencopi

Jonathan Phillips  
Leroy Sumatzkuku  
Danny Humetewa, Sr.  
Michael Elmer

Village of Mishongnovi

Mervin Yoyetewa  
Malinda Andrews  
Annette F. Talayumptewa

Village of Shipalouvi

Vacant  
Vacant

THE FOLLOWING VILLAGES DO NOT HAVE VILLAGE REPRESENTATION ON  
THE TRIBAL COUNCIL.

First Mesa Consolidated Villages: Walpi, Sichomovi, Tewa  
Village of Shungopavi  
Village of Oraibi  
Village of Hotevilla  
Village of Lower Moencopi  
Village of Sipaulovi



## Table of Contents

Executive Summary .....	3
Scope of Plan .....	7
Introduction .....	9
Exhibit A .....	14
Current State of Hopi .....	16
Background .....	16
Socio Economic .....	19
Education .....	30
Water .....	32
Solid Waste.....	39
Public Utilities.....	41
Energy .....	44
Renewable Energy .....	49
Transportation.....	56
Economic Development .....	59
Land .....	67
Department of Natural Resources .....	75
Strategic Projects, Programs and Activities of Hopi Tribal Government .....	78
Plan of Action .....	85
Appendix A .....	91
Reservation Vegetation Zones .....	93
Paavahu: Water Resources .....	97
TUTSKWA NIQW TOKO'AT: Land and Mineral Resources .....	103

## **Executive Summary**

The 2015 Hopi Comprehensive Economic Development Strategy (herein after known as “CEDS”) has been prepared by the Hopi Tribe to serve as a guide to assist the tribe in promoting greater economic development and economic self-sufficiency for the Hopi people and their reservation communities. The CEDS examines and evaluates the current state of the Hopi Tribe’s infrastructure and facilities as necessary components of the tribe’s overall plan to develop and maintain its reservation lands as a permanent sustainable homeland for the Hopi people. The CEDS will also identify the economic development challenges facing Hopi through an examination of the policies and procedures that either help or hinder Hopi in the pursuit of its strategic objectives, along with an analysis of proposed projects and their possible impacts on the Tribe’s present and future economic development and upon its members. The assertion of its sovereignty and establishing a strong strategic plan and organization, along with good leadership will enhance the ability of the Hopi Tribe to implement the CEDS framework. The framework or viewpoint of the CEDS will be to assess the Tribe’s current situation and offer recommendations and strategies for improving and to continuing a resilient and sustainable Tribal nation. The CEDS update will review all projects whether under EDA or other Federal funding.

The CEDS will identify and discuss the current national and state policies regarding climate change and the economic challenges and threats posed by this issue for the Hopi Tribe through the Clean Air Act. The national movement is swaying the pendulum from fossil fuels to renewable energy. Having no tax base, the Hopi Tribe over the last 40 years has relied on its Black Mesa coal leases with Peabody Energy to produce the bulk of its governmental revenues. The coal revenues have been relied on historically to produce 88%<sup>1</sup> of the Hopi Tribe’s General Fund – the revenues that are used to fund the essential governmental services provided by the Tribe to its people. Fueled by growing concerns over global climate change, dramatic changes in federal environmental policies with respect to coal-fired energy production pose huge economic challenges for the Tribe, which will essentially face a collapse of its economy if its coal

---

<sup>1</sup> *Analysis of Economic Impacts on the Hopi Tribe and Navajo Nation of a Stringent NOx BART Decision for the Navajo Generating Station, March 1, 2010*, Pg. 39. Prepared for the Hopi Tribe. ICF Resources, LLC, Fairfax, VA 22031 Letter Dated March 1, 2010 from Leroy Shingoitewa, Chairman, Hopi Tribal Council, to Jared Blumenfeld, EPA; Document number 0211 in the docent for the ANPRM: EPA-OAR-2009-0598.

sales were to end with a potential closure of the Navajo Generating Station (NGS) located in Page, Arizona.

The Hopi Tribe is among the poorest and most vulnerable populations in the United States and have already suffered enough from stringent and inflexible environmental regulations.<sup>2</sup> The shut down of the Mohave Generating Station (MGS) has already imposed a highly disproportionate economic burden on the Tribes. The shut down of NGS, the sole remaining buyer of Hopi coal after environmental regulations shut down MGS ten years ago, would devastate the Hopi Tribe...”<sup>3</sup> The Hopi have suffered lost the revenues from MGS, a lost between \$3.6 million to \$6.8 million<sup>4</sup>, as a result of these challenges and that the loss of NGS will spell economic calamity in the absence of alternative revenue sources and a diversified economy that is not heavily dependent on a single revenue source.

The CEDS will discuss how the climate change may possibly continue to affect the tribe’s future finances and will review current tribal policies, plans and proposed projects in light of the challenges posed for the Hopi Tribe by climate change. In order to deal with these challenges the Hopi Tribe’s goal will be to increase jobs opportunities, housing, and overall economic growth by creating and developing a sustainable economy for the future generations of Hopi members. At the same time, the CEDS must be implemented in a way that protects and respects the cultural and natural resources of the Hopi People, in particular, their land and water.

The CEDS is comprehensive in nature and is intended to create a collective inventory of the critical needs, projects/problems, and opportunities for a resilient Hopi economic development plan. The CEDS focuses on the critical need for water, sewer and electrical infrastructure and need to strengthen the Tribe’s ability to organize and move a project moving forward towards completion, including actual construction. The strategy will incorporate input and guidance from the Hopi Tribe’s Tribal Government, as well as from the autonomous Hopi Villages, and individual community members.

---

<sup>2</sup> *Ibid* at pg 7.

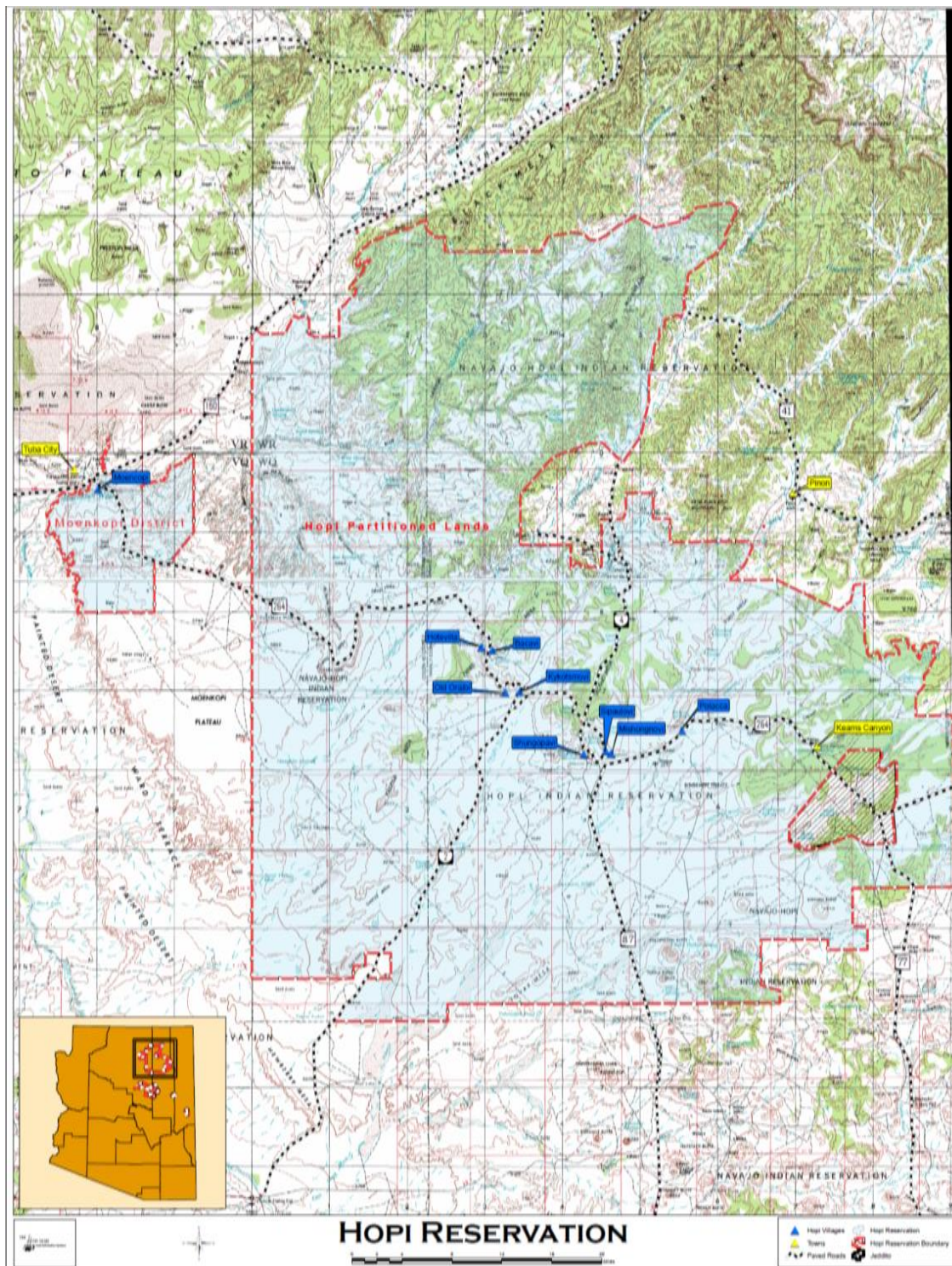
<sup>3</sup> *Ibid* at pg 7.

<sup>4</sup> *Ibid* at pg 7.



The Village and Clan authority over lands and sacred sites are included as part of the CEDS. The CEDS will be utilized as a document not only for planning economic development, but also as a means of protecting the Village's right to develop their own plans for future housing, small to major infrastructure improvements/developments and other initiatives within each village's jurisdiction. The Villages are in of control planning and development, both by growth in housing or by other economic development. Each Village will be included into the CEDS so that the document can create awareness for all members; even where no development is planned leaving the village to handle its own growth, according to its own decisions as time goes forward.

The Hopi Comprehensive Economic Development Strategy will be a guide for the Tribal Council, the Villages and the people to be utilized for applying for federal, state, and local funding opportunities that will assist the tribe in facing the challenges of building a sustainable homeland in a remote reservation environment with few direct links to the regional and national economies.



### **Scope of Plan**

This plan has a five-to-ten year scope and focuses on the essential framework of where the Tribe and its internal departments and programs will be over the years leading to the next CEDS update. Each section has identified tribal departments/programs, which have set a goal and list of priorities that will be setting the short or long terms plans through the CEDS. The recovery from the projected future loss of the tribe's coal revenues will be critical in lessening the economic impacts on the Hopi Tribe and its members. This plan will serve as the foundation for both direct short term and future long range planning in that effort.

The CEDS will compile the list or inventory for all major projects and identify the priority listing for key or necessary projects. Those projects will then be reviewed to determine their strengths, weaknesses, opportunities and threats (SWOT) through continued updates for the CEDS.

### **Looking to the Future**

The Hopi Tribe's elected officials will set the policies and plans that will guide the departmental staff in implementing strategies aimed at diversifying the tribe's economy away from dependency on coal revenues through development of other forms of revenue income. By diversifying the tribe's economy through strategically planned and implemented economic development, the Hopi Tribal Council will have the opportunity to create a self-sustaining economy that reflects the core Hopi traditional and cultural values that have sustained the Hopi in their homeland over many hundreds of years. The approach will be to set goals/recommendations to get to implement the work.

### **Community and Economic Development Strategies**

- Energy and Renewable Energy Development
- Businesses such as Solar and/or Wind Development
- Eco and Cultural Tourism "Center of the World" concept
- Tawa'ovi as a main destination
- Traveling Tourists visit to a Hopi Visitor Center
- Traditional Hopi Farming

- Light industrial and manufacturing

#### Improvement to the Quality of Life

- Safe Drinking Water
- Housing
- Veterans Center
- Senior Citizen Center
- Youth Center and/or Boys and Girls Club
- Self-Sustaining Hopi Tribal Utility Authority
- Utility infrastructure (water, sewer and energy)

## Introduction

The Hopi Tribe's Office of Community Planning and Economic Development (CPED) has secured a grant through the U.S. Department of Economic Development Administration. The objective of the project has been to help the Hopi Tribe update the Hopi Tribe Comprehensive Economic Development Strategy (CEDS).

With the close of the Mohave Generating Station (MGS) in 2005, the Hopi Tribe suffered a devastating economic loss of many millions of dollars previously generated by coal sales to MGS. The Black Mesa mining operation supplied coal to the Mohave Generating Station from 1970 until December 2005, when the Black Mesa mining operation ceased delivering coal due to the suspension of Mohave Generating Station operation.<sup>5</sup> The Hopi Tribe is the tribe most dependent on a single source of coal revenues in the United States.<sup>6</sup> The Hopi Tribe must emphasize once more: the shut down of NGS, the only remaining buyer of Hopi coal after environmental regulations shut down the Mohave Generating Station, would devastate the Hopi Tribe and greatly harm the Navajo Nation.<sup>7</sup>

The Hopi Tribe has never recovered from the economic impacts of the lost MGS revenues. Since 2010, the Hopi Tribe's comments on Climate Change Legislation and to the U.S. Environmental Protection Agency *In Re the Environmental Protection Agency's Advanced Notice of Proposed Rulemaking Regarding Best Available Retrofit Technology for Nitrogen Oxide Emissions at the Navajo Generating Station Docket Number EPA-R09-OAR-2009-0598*, have stressed the economic relationship of the Tribe to the Navajo Generating Station (NGS).

The March 2010 report prepared by the Hopi Tribe, and the ICF International Report on the *Analysis of Economic Impacts on the Hopi Tribe and Navajo Nation of a Stringent NOx BART Decision for the Navajo Generating Station, March 1, 2010*<sup>8</sup> provided an overview of the tribe's historical economic relationship to the NGS plant.

---

<sup>5</sup> Black Mesa Project EIS, ES-3 Executive Summary, November 2008.

<sup>6</sup> *Analysis of Economic Impacts on the Hopi Tribe and Navajo Nation of a Stringent NOx BART Decision for the Navajo Generating Station, March 1, 2010*, Pg. 38. Prepared for the Hopi Tribe. ICF Resources, LLC, Fairfax, VA 22031. Letter Dated March 1, 2010 from Leroy Shingoitewa, Chairman, Hopi Tribal Council, to Jared Blumenfeld, EPA; Document number 0211 in the docent for the ANPRM: EPA-OAR-2009-0598.

<sup>7</sup> *Ibid* at pg. 38

<sup>8</sup> *Analysis of Economic Impacts on the Hopi Tribe and Navajo Nation of a Stringent NOx BART Decision for the Navajo Generating Station, March 1, 2010*. Prepared for the Hopi Tribe. ICF Resources, LLC, Fairfax, VA 22031 Letter Dated March 1, 2010 from Leroy Shingoitewa, Chairman, Hopi Tribal Council, to Jared Blumenfeld, EPA; Document number 0211 in the docent for the ANPRM: EPA-OAR-2009-0598.

National Climate Change Policy has hit the Hopi Tribe once with the closure of MGS; the next chapter may well see those negative economic impacts magnified many times over if, as may be likely, the NGS plant eventually faces the same fate as MGS back in 2005.

National climate policy may also eventually affect another key aspect of the Hopi economy – the reliable source of electrical energy currently delivered to the reservation from the Arizona Public Service (APS) coal-fired power plant located in Joseph City, Arizona. This energy supply is delivered to the Hopi Tribe through a single 64 kv line to a small substation located in Keams Canyon Arizona. This substation then feeds one single line, with many spurs off the line from Keams Canyon to Third Mesa. National policy will take a heavy toll on the Hopi tribe, creating both the challenge and the urgency to create and implement an independent economic development strategic plan over the course of the next ten years.

The Hopi Tribal Government and its elected officials recognize that they must commit the Tribe to reviewing and considering other options that will either diversify its coal revenues through developing avenues into other markets for its coal, - knowing well the many uncertainties currently facing NGS and the looming possibility that it may well face an ultimate, if not imminent shut down - or through the development of other economic development revenue sources through renewable energy such as solar and/or wind. Proposed projects will be identified with a need to set priorities for implementation. The Hopi Tribe CEDS will identify possible future projects to increase employment and create a quality of life for all ages of Hopi Tribal members.

#### Hopi Tribal Organization

Hopi Tribal Government existed for many hundreds of years before the founding of the United States. Hopi governmental authority was traditionally exercised at the local village level through the religious leadership. In 1934 the Hopi chose to organize under a constitutional form of government under federal legislation known as “the Indian Reorganization Act of 1934”. The Hopi Constitution established the Hopi Tribal Council as the governing body for all issues affecting the Tribe as a whole, while local matters were largely left to the village governments.

### Hopi Traditional Sovereignty

As stated in one report concerning traditional Hopi government structure, “They remained largely self-sufficient communities, an agricultural and pastoral society under the leadership of village governments, each village continuing to exist as an independent sovereignty. Being a profoundly religious people, each Hopi Village government was headed by its principal spiritual leader, the Kikmongwi. The Kikmongwis and other religious leaders chosen by the various clans governed the religious and secular life of the village as their ancestors had for centuries before. Under the Hopi system, property rights were determined village by village, according to clan membership as determined by a system of matrilineal descent.”<sup>9</sup>

### Hopi Tribal Constitutional Government

Following a vote by the Hopi people adopting a constitution, on December 19, 1936, (As Amended on August 1, 1969; February 14, 1980 and December 7, 1993); the U.S. Secretary of the Interior approved a constitution for the Hopi Tribe under the Indian Reorganization Act of 1934. The Hopi Constitution established the Hopi Tribal Council and gave it the responsibility to protect traditional Hopi lands and its people, and to carry out the tribe’s government-to-government relationship with the United States. The Hopi Constitution provides in Article III – Organization, that the following (list) villages are recognized: First Mesa (consolidated villages of Walpi, Shitchumovi, and Tewa); Mishongnovi, Sipaulavi, Shungopavi; Oraibi, Kykotsmovi, Bakabi, Hotevilla and Moenkopi.<sup>10</sup>

By organizing the Hopi Tribal Council, the Traditional Villages did not accept the modern form of government as reported back to the U.S. Federal Government. The traditional long-standing sovereignty of each village by way of the Kikmongwi had been challenged. Today, as recognized in the current Hopi Tribal Council organizational chart: the First Mesa Consolidated Villages: Walpi, Sichomovi, Tewa; Village of

---

<sup>9</sup> Report to the Hopi Kikmongwis and other Traditional Hopi Leaders on Docket 196 and the Continuing Threat to Hopi Land and Sovereignty. (1979). Indian Law Resource Center: Washington, D.C.

<sup>10</sup> Constitution and By-Laws of the Hopi Tribe Approved 19, 1936 and as Amended on August 1, 1969, February 14, 1980 and December 7, 1993. United States Department of Interior Office of Indian Affairs.

Shungopavi; Village of Oraibi; Village of Hotevilla and the Village of Lower Moencopi remain constant to historical and cultural religious beliefs of the traditional Kikmongwi.

### Villages

All Hopi villages seem to be experiencing annual population growth. The traditional villages must deal with land ownership issues, of which are complicated in nature when it comes to clan, farm, home and/or village lands. However, under the Hopi Tribal government, some lands are being set aside for future communities that do not fall under strict land classifications per the traditional Kikmongwi. With this parallel plan for future economic development, the difficult dilemma facing the Hopi people is the task of maintaining Hopi values and other community values, while living and operating within a larger, more dominant society characterized by an entirely different set of values.<sup>11</sup> Finding a delicate balance to co-exist within the two worlds is difficult but necessary to achieve the Tribe's vision for the future without having to sacrifice the Hopi way.<sup>12</sup>

However, as such, the Hopi constitution's concept of the "majority rule" defined by the U.S. Government, can sometimes lead to tensions between the council's leadership and that of the village leaders. The western principle of "majority rule", by empowering the Council to make decisions by majority vote, rather than through the traditional religious leadership, was viewed by many Hopi as undercutting the rightful authority of the traditional Kikmongwi. Meanwhile, the "two world" concept is developing as a new way for villages to move forward into the future with ideas in developing new housing, schools, and small to large economic ventures, while at the same time remaining true to fundamental religious practices and teachings. Today, many villages continue to practice the traditional form of leadership and do not have elected individuals representing them on the Hopi Tribal Council. The "majority rule" western perception continues to be a point of contention when long time respect and understanding for the Kikmongwi traditional knowledge and ways have been in existence for hundreds of years prior to the "majority vote".<sup>13</sup>

---

<sup>11</sup> Hopi Potskwaniat, November 29, 2011, pg 11.

<sup>12</sup> *Ibid* at pg 1.

<sup>13</sup> Note: The Hopi Tribal Government and its relationship to the various sovereign villages continue to have a variety of interpretations when dealing with who is a representative from a traditional village; either through a majority vote ruling or a kikmongwi



### Village Government

The Hopi Constitution states under Article VII – Land, Section 1. Assignment of use of farming land within the traditional clan holdings of Villages, as recognized by the Constitution, shall be made by each village according to its established custom, or such rules as it may lay down under a village Constitution adopted according to the provisions of Article III, Section 4. Unoccupied land beyond the clan and village holdings mentioned shall be open to the use of any member of the Tribe, under the supervision of the Tribal Council.<sup>14</sup> Each village has either a Community Service Administrator or appointed individual(s) as representatives to handle daily village matters.

### Tribal Government

As the Hopi Constitution reads in the Preamble: This Constitution, to be known as the Constitution and By-Laws of the Hopi Tribe, is adopted by the self-governing Hopi and Tewa villages of Arizona to provide a way of working together for peace and agreement between the villages, and of preserving the good things of Hopi life, and to provide a way of organizing to deal with modern problems, with the United States Government and with the outside world generally.<sup>15</sup>

The Hopi Tribal Council votes to make tribal law/tribal ordinances and policy and conducts the day-to-day tribal business for both tribal village matters to the government-to-government relationships with the state and federal entities before the Hopi Tribal Council. The Tribal Council includes a Chairman, Vice Chairman, Secretary, and Treasurer and Village representatives based on the population of each village.

The Hopi Tribal Council recognizes various Tribal Task Teams to review legislative action items and other tribal policy items. The lists of task teams are: Water/Energy Task Team, Land Task Team, and Law Enforcement Task Team, the Transportation Task Team, Re-Organization Task Team, Temporary Moenkopi Development Corporation Loan Oversight Committee, Tawa'ovi Development Team,

---

appointment. This causes government to move slowly in its need to create a self-reliant government and economy. Voting is a challenge when many do not even come out to vote in Tribal elections.

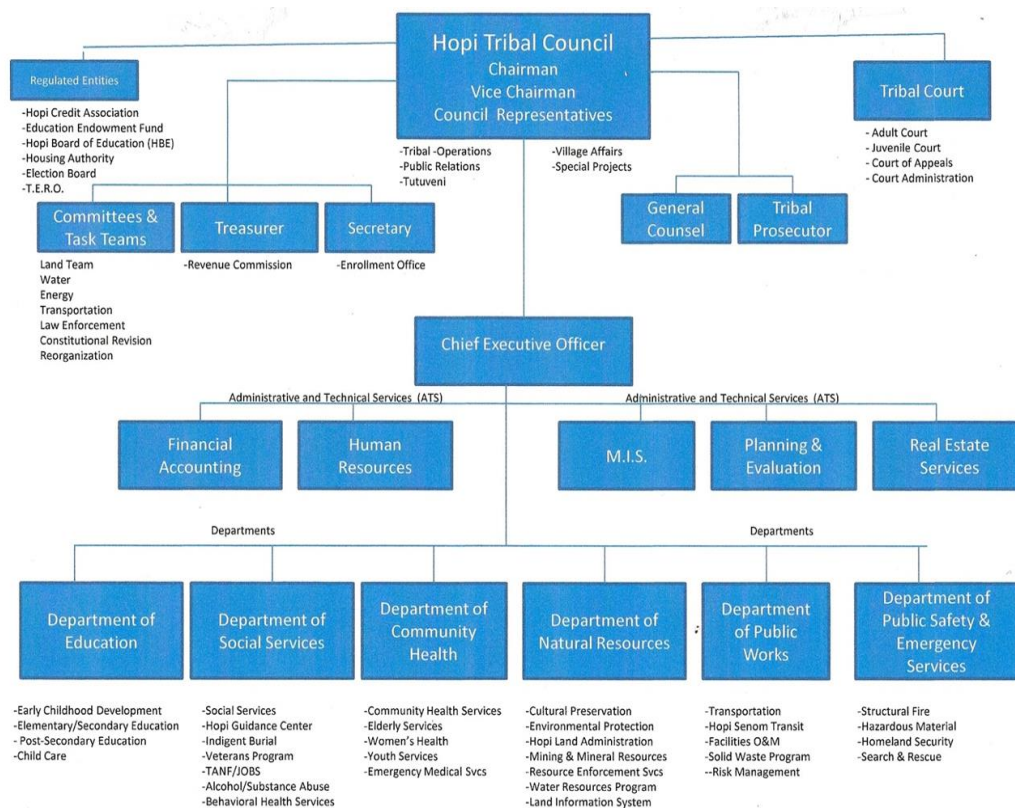
<sup>14</sup> Constitution and By-Laws of the Hopi Tribe Approved 19, 1936 and as Amended on August 1, 1969, February 14, 1980 and December 7, 1993. United States Department of Interior Office of Indian Affairs.

<sup>15</sup> Constitution and By-Laws of the Hopi Tribe Approved 19, 1936 and as Amended on August 1, 1969, February 14, 1980 and December 7, 1993. United States Department of Interior Office of Indian Affairs.

Education Oridanance #36 Revision Team, Grants and Scholarship Board, Election Board, Hopi Tribal Housing Authority/Board of Commissioners, Grazing Hearing Board, Hopi Health Advisory Council, Youth Treatment Center Steering Committee, Pension Committee, Hopi Detention Facility Steering Committee, Hopi Tribe Economic Development/Board of Directors, All Indian Pueblo Council, and National Congress of American Indian (NCAI).

Hopi Tribal Council Resolution H-110-09<sup>16</sup>

Exhibit A - Reorganizational Chart:



November 22, 2009, the Hopi Tribal Council approved the Hopi Tribal Resolution H-110-09.

<sup>16</sup> Note: Exhibit A: Currently the Hopi Tribal Council Reorganizational Chart is being reviewed for policy changes to implement Phase II of the organizational chart.

The proposed reorganizational changes are set below in two phases the Hopi Tribal Government, which include:

Phase I:

- The Vice Chairman has no direct authority over the departments/programs that were under the office from the last reorganization of 1988/1989.
- The Council in the reorganization has created the Chief Executive Officer/Executive Director (CEO/ED) as the direct line of authority/supervision/accountability of all Department Managers and Directors. Departments include: Department of Natural Resources; Department of Community Health; and Department of Social Services;
- Two Departments were abolished: Department of Human Services (DHS) and Tribal Department Manager.
- Three Departments realigned as separate departments are: Department of Education; Department of Social Services and Community Health Services.

Phase II:

- Two new Departments include: Public Works and Public Safety & Emergency Services.
- The CEO/ED has oversight of Administrative and Technical Services offices: the Offices of Finance, Human Services (Personnel), Management Information Systems (MIS) and Planning & Evaluation.
- The Office of Realty Services; reporting as a department to the CEO/ED.  
(Phase II is currently being reviewed by Hopi Tribal Council task team.)

The Hopi Tribe, Executive Branch is accountable for implementing the laws, policies and ordinances approved and/or adopted by the Tribal Council. The Chairman and/or in his absence the Vice Chairman is responsible to conduct the day-to-day business of the Hopi Tribal government. The Executive Director is responsible for overseeing all tribal departments and programs. The Executive Director reports to the Hopi Tribal Council. The executive branch approvals include but are not limited to economic development, health, education, administrative services and support, natural resources and financial management.

The Hopi Tribe, Judicial Branch and court system interpret the Hopi Tribe's Constitution and enforce the tribe's ordinances and laws.

## **Current State of Hopi**

The current state of the Hopi Tribe's investments has created a base or foundation to begin creating jobs. Hopi continues to lag behind other surrounding communities, such as neighboring communities on the Navajo Nation and other bordering towns. The possibilities and need for economic growth are clearly apparent when driving through the Hopi reservation, where only a few restaurants, grocery stores or even gas stations exist. The Hopi Government and surrounding villages rely heavily on federal funds for support. The Hopi government maintains all Indian Education and Self-Determination Act Public Law (P.L.) 93-638 funds that are in the form of contracts for various projects for Hopi. Other funds from the federal government constitute valuable sources of tribal revenues; however the key revenue income comes from the coal sales to Peabody Energy.

## **Background**

The Hopi Tribe is located in northeastern Arizona estimates about 90 miles one-way from Flagstaff through the Navajo Nation lands along Indian Route 2. The main Hopi "1882 reservation" is isolated and entirely surrounded by the Navajo Nation. The location is remote and extremely rural, with the closest large economic centers being about 90 – 100 miles away from the main reservation. This isolation creates economic challenges for purchasing basic food and necessities when the people are forced to regularly travel to communities such as Flagstaff, Winslow and Gallup, just to shop and conduct the basic business activities of life. The Hopi Tribe's total membership is approximately 14,127 of which only an estimated 7,815 live and work on the reservation.

The Hopi Reservation, approximately 3,000 square miles in area, is comprised of lands surrounding the main population center (District 6), the adjoining Hopi Partitioned Lands (HPL), and the separated Moenkopi District.<sup>17</sup> Approximately 14,127 residents live on /off the Hopi Reservation within 14 residential communities or villages.<sup>18</sup> The majority of these residents live along the State Highway 264 corridor in villages near First, Second, and Third Mesas.<sup>19</sup> However, three outlying communities exist – Spider

---

<sup>17</sup> Hopi Source Water Assessments by Tetra Tech EM Inc. pg 5

<sup>18</sup> *Ibid at pg 5.*

<sup>19</sup> *Ibid at pg 5*

Mound and Keams Canyon to the east, and to the west the Villages of Moenkopi located adjacent to the Navajo community of Tuba City.<sup>20</sup>

The remote location creates challenges for responding to job opportunities, due to the one-way driving route of 90+ miles, take for example from Flagstaff driving to and from a job either living on the reservation or driving to the main Hopi headquarters. If housing for workers is not available on the reservation, commuting by the Hopi Senom Transit System is an option from any Hopi Village to, for example, the City of Flagstaff totaling a 180 mile round trip. This sort of commute is often mandatory if one wants to either find a job off reservation or work at a job on the reservation. This is a loss as far as travel time, and it is a double loss when the only large economic centers for groceries, clothing and other amenities are located in these various non-Indian communities. Because of this lack of a vibrant economy of businesses on the reservation, the Hopi Tribe and its members contribute a steady stream of tribal dollars to the economies of these surrounding non-Indian communities – all at the expense of much need on-reservation development. This economic loss is a significant loss to the Hopi Tribe; in that, a high percentage of a person's paycheck is spent off reservation for daily living necessities, such as food, clothing, and other household needs.

The Hopi cultural traditions and beliefs are intricately intertwined into the decision making process when it comes to allocating land for use in economic development projects. The November 29, 2011 Hopi Potskwaniat (Hopi Strategic Plan) defines Hopi Values as: Preservation, practice and protection of the religion and ceremonies, cultural customs and practices; language, arts and crafts, etc., of the Hopi.<sup>21</sup> Because of its importance in Hopi culture, land use issues can sometimes present challenges (due to approvals and permits) to economic development by way of capital construction for housing, commercial buildings and other types of infrastructure. Traditional Hopi practices have strong ties to the land and natural resources. For example, the ongoing traditional practice of dry farming in an arid homeland continues to be a very visible aspect of Hopi life. Land practices and relations to clans and clan lands create binding limits for each village as they work to create their own economic

---

<sup>20</sup> *Ibid at pg 5*

<sup>21</sup> Hopi Potskwaniat, November 29, 2011 pg 10

development ventures through land approvals for housing and small commercial business sites. Across the main reservation as a whole, land use will continue to be constrained by traditional land values. The Hopi Tribe will continue to face case-by-case decision-making resolution of land use issues when it comes to deciding locations for future economic development.

Since at least the late 1990's, the Hopi tribal government has worked to generate economic development through the purchase of commercial developments off the main reservation, as a source of revenue and as an investment for the tribe. The ranch lands located on I-40, the Hart & Drye Ranch, the Clear Creek and Chevelon Ranch, and Aja Ranch; 26 Bar ranch new Springerville, AZ. There are also the agricultural lands in La Paz County, the Cibolla property. Additional, Hopi lands that have been purchased commercial properties in Flagstaff, Sedona, Winslow, and Holbrook. The purchase of all these assets will help the Tribe improve and diversify the tribal government revenues.

The Tribal government will continue to look to increase and diversify economic revenue through commercial land purchases for the Tribe through Hopi development corporations overseen by a Board of Directors. The Tribal government has created the Hopi Tribe Economic Development Corporation (HTEDC) to examine future investments and other types of economic ventures that will allow the Tribe to increase its revenue. The Tawa'ovi Project is another project overseen by the Tawa'ovi Board of Directors looking at creating a "new community" where tribal and non-tribal individuals can live, work and create other economic venues, such as small retail or visiting centers.

The Hopi Tribal Planning Ordinance No. 55, along with the Hopi Tribe Strategic Land Use and Development Plan give some indication for planning new proposed communities. The Hopi Tribe has proposed planned community developments such as: Yu Weh Loo Pahki known as Spider Mound; Tawa'ovi; Side Rock Well and Hollow Mesa East. The new communities could include: housing, commercial, government/institutional buildings, recreation, tourism/museum facilities and other small light industrial developments. These new developments would all be located on the main Hopi reservation lands. Off reservation community planned locations can be found on the Hopi ranch lands or at the Hopi Industrial Park location in Winslow, Arizona.

## **Socio Economic**

The information gathered on the current 2015 Hopi population and economy is evolving and thus a best estimate may have to suffice for purposes of the CEDS. The Tribe collects data from various entities such as: U.S. Bureau of Indian Affairs (BIA), U.S. Bureau of Census, Arizona Department of Commerce, Navajo and Coconino County offices as well as from other recent or ongoing projects utilizing recently collected statistics on household income, unemployment, labor force and other economic movement.

The census data, tribal enrollment records and tribal database are all ways to collect the data, however, due to the demographics, the definitions to analyze the data must accommodate the current living conditions. This results in varying data and how to understand and utilize the data creates a unique analytical result.

### Population

Census data has always been problematic for Hopi especially for the Tribe's use for applying for federal or other types of funding for proposed projects. There are traditional Hopi members who will decline to participate in any type of survey or count that may be conducted by the U.S. Census Bureau or the Tribe/Village. This reluctance to take a survey is due to historical transgenerational trauma from outsiders, especially from the people representing the U.S. federal government. There are other aspects, such as having a Hopi home on the reservation but, living and working off the reservation for part of the year, making it difficult to include such part-time residents in the count, and difficult to qualify for residential purposes. A varying percentage of Hopis live and work off the main reservation; however, return for ceremonies and other family obligations.

### Hopi's Current Socio Overview

The population of the Hopi Tribe grew moderately at 3.4% in the 2010 Census when compared to the previous ACS report 2000 Census. This increase in tribal members, however, may not truly reflect the actual change in the tribe between the census periods, because this rate reflects growth by birthrate alone and not growth

through migration, as is the case with both the State and the County. The American Community Survey (ACS) data accounts for only the population within the exterior boundaries of the tribal lands. Both the State (24.6%) and the County (10.2%) grew at much faster rates between the 2000 and 2010 Censuses.<sup>22</sup>

Table 1. Total Population & Trends

Total Population and Trends	Arizona	Navajo County	The Hopi Tribe
Total Population 1990	3,665,228	77,658	8,258
Total Population 2000	5,130,632	97,470	10,571
Total Population 2010	6,392,017	107,449 <sup>23</sup>	13,532 <sup>24</sup>
Total Population 2014	6,479,703	108,101 <sup>25</sup>	13,532
Total Population 2015			14,152 <sup>26</sup>
Change in Population 2000-2010	24.6%	10.2%	3.4%

Source: Census 1990, 2000, 2010 (census data spanning 10 year timeframes)

The average growth rate the Hopi Tribe utilized was the 2.5% increase in population over the course of 10 years. The 3.4% population increase clearly shows an increase in population growth over the last 5 years from 2010 to 2015. As such, the new percentage supports the need to increase planning and for key improvement projects both in the villages and within the tribe overall.

The Hopi on-reservation population is scattered throughout the 12 Hopi villages and other populated areas across the Hopi reservation. The main reservation is located along Arizona state highway 264 running between the Moenkopi villages in the west to Keams Canyon on the eastern side of the reservation. Another community is east, past Keams Canyon about 16 miles is the recent community named Spider Mound.

While most homes are located within or near the villages; some families obtain land leases located totally outside of the villages' land boundaries. Known as scattered-site housing, these home site locations are becoming important alternative places for the

<sup>22</sup> *Demographic Analysis of the Hopi Tribe Using 2010 Census and 2010 American Community Survey Estimates*. Completed by: Arizona Rural Policy Institute, Center for Business Outreach, W.A. Franke College of Business Northern Arizona University.

<sup>23</sup> US Census Bureau website for Navajo County, Arizona 2010 census.

<sup>24</sup> Hopi Tribal Enrollment office statistics by year.

<sup>25</sup> US Census Bureau website for Navajo County, Arizona 2014 estimate.

<sup>26</sup> Hopi Tribal Enrollment office telephone conversation June 2015.



Hopi to build and live. If a home is outside village boundaries, then they either live near their livestock or near farm lands. Other locations include: Hopi Trust Lands in Winslow, on which are located 33 low income-housing units; all of which are occupied.

The data in Exhibit B shows the latest enrollment figures per an interview with the Hopi Tribe Enrollment Office<sup>27</sup>. According to the Hopi Tribe Enrollment Office, due to a lack of housing and other employment opportunities, many Hopi move off the reservation to seek housing and employment in the surrounding communities such as Holbrook, Winslow, Flagstaff and/or Phoenix, Arizona, or as far as Gallup or Albuquerque, New Mexico, where many off-reservation tribal members live.

Exhibit B (2015)

<b>Village</b>	<b>Population 2015<sup>28</sup></b>	<b>Projected Population 2050<sup>29</sup></b>
Moenkopi Island	2,231	3,669
Upper Moenkopi		
Lower Moenkopi		
Third Mesa		9,045
Bacavi	684	
Hotevilla	1,700	
Kykotsmovi	1,367	
Oraibi	505	
Second Mesa		6,874
Sipaulovi	711	
Mishongnovi	1,289	
Shungopavi	1,942	
First Mesa		3,241
Sichomovi	1,504	
Tewa	1,463	
Walpi	731	
<b>Currently living ON HOPI</b>	<b>7,815</b>	

<sup>27</sup> Hopi Tribal Enrollment Office, Data as of June 1, 2015.

<sup>28</sup> Note: 2015 data from Hopi Tribal Enrollment Office.

<sup>29</sup> Note: 2050 population numbers reflect the BOR Report of Findings October 2006. Current water supplies and demands will be unmet for the Hopi Tribe's projected population in 2050. The NCAWSS continued work will look at a regional alternative to meet the future demand.

<b>Currently living OFF HOPI</b>	6,312	
<b>Total Hopi Enrollment</b>	14,127	23,693 <sup>30</sup>

### Population Adjustment

The Hopi Tribal data base shows an upward trend in population growth, increasing by 3.4% between 2000 and 2010. As of June 2015, the Hopi total population is 14,127 with 7,815 living on the reservation and 6,312 living off the reservation. An additional 650 non-tribal members live and work on the reservation for a total population living on the reservation 8,465. In the past, the Office of Community Planning and Economic Development will utilize the growth rate of 2.5% to project Hopi population figures. Due to the increase of 3.4% in population growth within a five year time frame, the Office of Community Planning and Economic Development should use the current percentage of 3.4%.

The tribal members that live off the reservation seek other job opportunities as well as higher secondary education by way of obtaining a post-secondary college degree or vocational certification. Other reasons for living off the reservation may be seeking housing and other common household amenities that are not available on the reservation due to lack of water, sewer and electrical infrastructure. However, many people seek home site leases to build homes near the village or as a scattered home site.

### Enrollment

The Hopi Constitution provides under Article II, the membership qualifications all Hopi have to meet. In some instances, some Hopis are not officially enrolled due to the membership requirements, although they speak Hopi fluently and live on/off the Hopi reservation. The Hopi tribal requirements for enrollment depend on documentation of parents and grandparents and the degree of Indian Hopi blood. Tribal membership is used to establish individual eligibility of the various tribal programs such as: tribal housing, land assignments and grazing permits, scholarships, jobs and other various social service programs the tribal government provides.

<sup>30</sup> Note: The Hopi 2050 population column in Table B represents the overall projected population with trends of movement to proposed planned villages/communities. The numbers reflect growth through existing Census 2050 with the 2.5% increase in population projections; however, the percentage has gone from 2.5% to 3.4% over the course of time.

### Population Change

During the 2000's Arizona grew by 29% to over 6.6 million people.<sup>31</sup> The region grew ranging from Flagstaff's leading 22% growth to Winslow's less than 7%.<sup>32</sup> The only area included in the region's trade area that shrank was Gallup, New Mexico with a 2% decrease.<sup>33</sup>

POPULATION CHANGE <sup>34</sup>			
	April 2010	April 2014	Change
ARIZONA	5,130,632	6,629,455	29.20%
Apache County	69,423	76,156	9.70%
Coconino County	116,320	135,613	16.60%
Navajo County	97,470	114,780	17.80%
Flagstaff, AZ	52,894	64,693	22.30%
Holbrook, AZ	4,917	5,611	14.10%
Winslow, AZ	9,520	10,194	7.10%
Gallup, NM	20,209	19,979	-2.13%
Hopi Reservation	6,312	7,815	6.67%

With net out-migration of a negative -5,407 in Apache County to the east and net migration numbers at roughly ½ the natural population increase for Navajo County (which contains most of the Hopi Reservation) and Coconino County to the west, the region not only lags the state in population growth, it is losing people relative to Arizona's population growth.<sup>35</sup> Given the region's relatively poor economic performance and low-income levels, it seems clear that lack of economic opportunity is a key factor driving this regional population loss.<sup>36</sup>

### Trade Area Population

The relatively small population base of the Hopi Reservation at about 8,435 persons, even with the additional 9,520 population of Winslow, comprises a fairly small local trade area and labor market. The regional trade area grows to nearly 33,000 with

<sup>31</sup> 2010 Hopi Comprehensive Economic Development Strategy Prepared by The Office of Planning and Evaluation under an award from the U.S. Department of Economic Development Administration Project #07-84-06439.

<sup>32</sup> *Ibid* at pg 12.

<sup>33</sup> *Ibid* at pg 12.

<sup>34</sup> *Ibid* at pg 12.

<sup>35</sup> *Ibid* at pg 13.

<sup>36</sup> *Ibid* at pg 13.

the inclusion of neighboring Navajo towns such as Tuba City, adjacent to the Hopi village of Moenkopi which occupies the southwest corner of the intersection of State Route 264 and US Route 160 on the northwestern portion of the reservation. Adding Flagstaff, Arizona and Gallup, New Mexico as well as bordering Navajo Census Designated Place (CDP), the trade area expands to just over 120,000.<sup>37</sup>

TRADE AREA POPULATION	
	April 2013
Hopi Reservation	8,435
Holbrook, AZ	5,611
Winslow, AZ	10,194
Flagstaff, AZ	64,693
Gallup, NM	20,209
Total Neighboring Places	12,326
Dilkon CDP	1,265
Jeddito CDP	390
Pinon CDP	1,190
Tuba City CDP	8,225
Hard Rock CDP	1,256
<b>Total Trade Area</b>	<b>121,468</b>

Given the importance of family to the Hopi culture, for Hopis not living on their homelands and participating in their religious ceremonies, the population out-flow has special meaning that far exceeds the economic impact.<sup>38</sup> The greatest impact for the economically displaced off reservation could be reality of a situation where their children and grandchildren will not be able to interact with their elders and are not exposed to the Hopi language or the guidance of learning the Hopi traditional ways on a daily basis.

### Employment Area Population

The main reservation population of 7,815 members travel to local bordering towns, both out on the Navajo Reservation such as Tuba City and Jeddito as well as communities like Winslow, Holbrook, Gallup and Flagstaff in order to satisfy the demand

<sup>37</sup> 2010 Hopi Comprehensive Economic Development Strategy Prepared by The Office of Planning and Evaluation under an award from the U.S. Department of Economic Development Administration Project #07-84-06439.

<sup>38</sup> *Ibid* at pg 13

for jobs and other amenities that cannot be purchased on the main Hopi reservation. Driving long distances to these bordering communities on a daily basis is not unusual for Hopi tribal members.

### Income

The percentage of families living below poverty on the national level has increased, making the local Hopi poverty rate increase across the reservation. Many Hopi are self-employed, earning varying incomes in the local arts, crafts and jewelry business. The data on levels of income from the ACS (American Community Survey) source is inconclusive. Occasional sales of crafts generate an estimate of \$1.9 million, which is probably not only unreported but also unrecorded as it is used almost immediately to purchase needed items.<sup>39</sup>

The 2001 Tribal database shows an average annual on-reservation household income was between \$8,637 to \$15,776. Between 11% -13.6 of the households' income exceeds the Housing Urban Development (HUD) standards for poverty. By Hopi Health Services (HHS) standards, 61% of the households are below poverty level. By HUD standards, another 23% are in the Low and Very Low income categories and 6% are in the moderate category.<sup>40</sup> The median family income on the Reservation has increased from \$15,875 in 1999 to as much as \$41,250 in 2007.<sup>41</sup> The census reported the median family income for Hopi residents in 2005 as \$15,875 which is less than one-half the median family income for Navajo County, Coconino County, and the state of Arizona. In 2005, the median family income for Hopi residents living in Moenkopi was substantially higher (more than double) than on the Reservation; this disparity is because Moenkopi residents have better income opportunities, i.e., working for Peabody Western Coal Company (currently Peabody Energy).<sup>42</sup>

Expenses such as mortgage payments, rental payments, utility and public service fees are not considered in determining poverty levels. Half the households are living in other forms such as rental housing or shelter. Of the owner occupied housing, 33.8%

---

<sup>39</sup> 2010 Hopi Comprehensive Economic Development Strategy Prepared by The Office of Planning and Evaluation under an award from the U.S. Department of Economic Development Administration Project #07-84-06439.

<sup>40</sup> *Ibid.* at pg 10

<sup>41</sup> Hopi Indian Reservation Socioeconomic Study prepared by SWCA, April 30, 2008

<sup>42</sup> *Ibid* at pg. 18

have no mortgage payments and only 2.4% are paying more than 30% of their income on mortgage payments.

### Employment

The Hopi reservation's major employment centers are through governmental agencies and/or government funded programs. The government jobs are dependable with the better salaries, health/insurance and retirement packages. The list includes: Hopi Tribal Government, the various schools (contract/grant), the Indian Health Services (IHS), the Bureau of Indian Affairs (BIA) and Bureau of Indian Education (BIE).

The table below shows the Hopi Tribe's major employers are:

<b>Business/Employment</b>	<b>Total Employees</b>
Hopi Tribal Administration	491
U.S. Indian Health Service	261
Moencopi Legacy Inn/Denny's Restaurant/ affiliates	113
McGee's Trading Post/affiliates	50
Hopi Cultural Center Hotel/Restaurant	49
U.S. Department of Interior Law Enforcement Services	43
Kykotsmobi Village Store	39
U.S. Bureau of Indian Affairs (BIA)	20
Hotevilla Co-op Store	14

There are 9 schools that start kindergarten through 12<sup>th</sup> grade in high school located in the confines of the Hopi Reservation. There are pre-kindergarten, Hopi Head start with facilities located throughout the Hopi communities.

<b>K-12 Schools</b>	<b>Totals Employees</b>
Jeddito Public School (Arizona Public school)	40
Keams Canyon, (Grant School)	26
Hopi Jr. – Sr. High School (Grant school)	85
Hopi Mission (parochial school)	20
Hopi Day School (Grant School)	41

First Mesa Day School (Grant School)	40
Second Mesa Day School (Grant School)	52
Hotevilla-Bacavi Community School (Grant School)	14
Moencopi Day School (Grant School)	42
<b>Total</b>	<b>653</b>

Note:<sup>43</sup>

The Hopi Tribe has recently faced revenue decreases due to the last 3 years of national to local economic reductions by hiring freezes, wage cutbacks, and other aspects that affect hiring and income revenue projections. This prediction of hiring freezes and/or budget restrictions due to budget cuts may occur over the next projected fiscal year of the Hopi Tribe. Current discussions by the Hopi Tribal Council indicate that there may be budget cuts and or restrictions. This proposed action would affect many in the way of reduction in force (RIF) and/or salary adjustments.

The major employment sectors on the Reservation in 2000, according to the Strategic Land Use Development plan were: Manufacturing at 40%; Educational, Health and Social Services at 33%; Public Administration sectors that include Hopi Governmental Services, Bureau of Indian Affairs (BIA) and Indian Health Services at 26%; Wholesale and Trade at 7%; Transportation and Utilities at 4%, Construction and Agriculture at 11% each; and Finance, Insurance and Real Estate at 1%.<sup>44</sup> A majority of the jobs and the income are from income earned from the public administration sector; tribal government jobs, Indian Health Service and social services.

<sup>43</sup> Note: Many of the schools mentioned in the table are going through changes from being under Bureau of Indian Education (BIE) to grant schools.

<sup>44</sup> Socioeconomic Study in Support of a Hydrographic Survey Report for the Hopi Indian Reservation Socioeconomic Study April 30, 2008. Prepared by SWCA Environmental Consultants for Arizona Department of Water Resources. Pg. at 16

**Exhibit II-2**  
**Tribal Job and Revenue Loss if NGS Shuts Down**

	<b>PERMANENT JOB LOSS (#)</b>		
	<b>HOPI</b>	<b>NAVAJO NATION</b>	<b>TOTAL</b>
Tribal Government <sup>1</sup>	400	N/A	400
Hopi Villages <sup>2</sup>	144	N/A	144
NGS <sup>3</sup>	-	436	436
Kayenta Mine <sup>4</sup>	-	380	380
Other Office <sup>5</sup>	N/A	N/A	N/A
Total Direct Job Loss <sup>6</sup>	544	816	1,360
Indirect Job Loss	816 – 1,360	1,224 – 2,040	2,040 – 3,400
Total Job Loss	1,360 – 1,904	2,040 – 2,855	3,400 – 4,759
	<b>ANNUAL REVENUE LOSS (Million \$)</b>		
	<b>HOPI</b>	<b>NAVAJO NATION</b>	<b>TOTAL</b>
NGS <sup>7</sup>	14	N/A	N/A
Payrolls & Benefits <sup>8</sup>	8	N/A	N/A
Indirect Payrolls & Benefits <sup>9</sup>	12 - 20	N/A	N/A
Total <sup>10</sup>	34 - 42	140	174 - 182
CAP Water Repayment to Both Tribes (Million\$/Year) <sup>11</sup>			\$60-\$90 (2016-2023)

<sup>1</sup> Hopi Tribal government employees totaled about 475. If NGS shuts down it assumes that the government would require 75 employees to maintain basic service. No information available for the Navajo Nation

<sup>2</sup> There are 12 Hopi Villages and assumes 12 employees from each village would lose jobs.

<sup>3</sup> 80% of 545 NGS employees are Navajos. (Source: Bureau of Reclamation /DOI comments to EPA date October 28, 2009, page 3)

<sup>4</sup> 90% of 422 Kayenta mine employees are Navajos. (Source: Bureau of Reclamation /DOI comments to EPA date October 28, 2009, page 3)

<sup>5</sup> Hopi Flagstaff offices

<sup>6</sup> Assumes multiplier effect of 1.5 to 2.5.

<sup>7</sup> Includes royalties, bonus, scholarships, and water payments. Annual Hopi revenue is projected for the period of 2019-2039. Navajo Nation revenue loss is estimated by subtracting payrolls & benefits from the total revenue and payrolls & benefits loss reported in the AZ governor's comments to EPA dated October 13, 2009.

<sup>8</sup> Hopi payrolls & benefits are estimated assuming Hopi per capita income in 2008 of \$11,364 (Source: city-data.com) 2.5% inflation, 30% benefits. For the Navajo Nation, information is not available.

<sup>9</sup> Assumes multiplier effect of 1.5 to 2.5.

<sup>10</sup> AZ Governor's comments to EPA dated October 13, 2009 on page 4 stated that NGS and Kayenta mine provide \$140 MM in revenue and wages to the Navajo Nation and its tribal members. No breakdown is given.

<sup>11</sup> Source: CAP

**Exhibit II-2<sup>45</sup>**

The Hopi Tribal government loss of jobs were projected in this Exhibit II-2 to show the devastation if NGS revenue should either decrease or be eliminated.

Statistics from the Economic Base Analysis prepared by the American Community Service (ACF) data, shows the total employment on the Hopi Reservation at 3,064 in 2010. The employment was a low 149 per 1,000 residents, which is the lowest of all Arizona unincorporated areas.

<sup>45</sup> Analysis of Economic Impacts on the Hopi Tribe and Navajo Nation of a Stringent NOx BART Decision for the Navajo Generating Station, March 1, 2010, Pg. 39. Prepared for the Hopi Tribe. ICF Resources, LLC, Fairfax, VA 22031 Letter Dated March 1, 2010 from Leroy Shingoitewa, Chairman, Hopi Tribal Council, to Jared Blumenfeld, EPA; Document number 0211 in the docent for the ANPRM: EPA-OAR-2009-0598.



According to an Economic Base Analysis prepared by the Arizona Department of Commerce, total employment on the Hopi Reservation is estimated to have been approximately 3,064 in 2010.<sup>46</sup> The number of jobs located on the Hopi Reservation (in 2001) was less than the 2,964 employed residents counted in the 2010 census, indicating that some residents commute to work in other communities.<sup>47</sup>

Between 2001 and 2004, the Hopi Reservation's employment fell nearly 25%, one of the largest declines in the state.<sup>48</sup> A gain was registered in utilities, but retail trade, accommodation and food services, and real estate and rental posted declines.<sup>49</sup> There was also a large drop in other general merchandise stores.<sup>50</sup>

The U.S. Department of Interior listed a labor force at only 6,123 with the potential unemployment rate to increase up to 66.0% for the Hopi Reservation in 2010. The Center for Economic Advancement at the Arizona Department of Commerce lists the following unemployment figures for the first quarter of 2010.<sup>51</sup>

Moenkopi CDP <sup>52</sup>	21.5%
First Mesa CDP	16.0%
Second Mesa CDP	24.7%
Hotevilla-Bacavi CDP	14.2%
Kykotsmovi CDP	20.9%
Shongopovi CDP	45.3%
Keams Canyon CDP	18.6%
Jeddito CDP	28.3%

The Hopi Tribe showed an increase in job losses experienced throughout the reservation. The data collected shows the percentages for unemployment for Navajo County only; not including the national average. The Hopi Tribe continues to remain far below current national, state and county unemployment rates.

The statistics show various perceptions for the Hopi Tribe and where the current job centers may be located; however, the challenges that continue would be the lack of jobs for all that live on the Hopi reservation. The Hopi Tribe and its government will

---

<sup>46</sup> *Ibid at pg 14*

<sup>47</sup> *Ibid at pg 14*

<sup>48</sup> *Ibid at pg. 14*

<sup>49</sup> *Ibid at pg. 14*

<sup>50</sup> *Ibid at pg 14*

<sup>51</sup> *Ibid at pg 14*

<sup>52</sup> Note: CDP stands for Census Designated Place.

need to identify the main goal and set policies or plans on increasing the standards of living and close the income gap.

Goal: Increase public facilities and generate jobs along with the local Hopi economy.

Policies:

1. The Tribe will identify all Hopi investments and assets that can create jobs.
2. The Tribe shall continue to pursue funding opportunities for small to large commercial start up projects from small commercial to large tribal projects.
3. Include educational programs and work force workshops for all ages.
4. Provide support for increased law enforcement and other public safety awareness.
5. Support an on-going fire safety program, including local schools for inspections to make buildings fire safe. This includes having the water infrastructure to ensure fire protection for all private, schools, public and other tribal infrastructures throughout Hopi.

## **Education**

Hopi's current education system includes 7 elementary schools, Moenkopi Day School, Hotevilla-Bacavi School, Hopi Day School, Second Mesa Day School, First Mesa Day School, and Hopi Mission School, Keams Canyon Elementary School. These 6 of the 7 schools receive full funding from the Bureau of Indian Education (BIE); Hopi Mission School is privately funded.

The Hopi Board of Education, made up of Members from each school, is regulated entity that reports directly to the Hopi Tribal Council. The purpose is to develop a more consistent education policy. The existing education ordinance was developed under the BIA, now known as the Bureau of Indian Education. The Department's goal is to structure the ordinance to meet the education needs of the Hopi people according to the current Arizona State Standards on providing a quality education.

The Hopi Tribe's Education office indicated, through direct conversation with Director, Dr. Noreen Sakiestewa, the changes that will be required in order to meet the challenges of education on Hopi. According to Dr. Sakiestewa, the needed change will

be in the form of having the Hopi Tribal Hopi Education Department take control of the grant schools. These schools would then be under the direct supervision and oversight of the Hopi Education Department.

The purpose or strategy behind this change would be to provide a quality education that incorporates strengthening the Hopi language, culture and history into the curriculum. Nation building through K-12 education. The core values of Hopi would be able to be translated to the children through western teachings through academia; however, strengthening the Hopi'lavayi into the K-12 core curriculum would enhance values of sovereignty at an early age of 5.

Education has been a high priority for the Hopi people. In 2000 the tribal council established a Hopi Education Endowment Fund (HEEF) of \$10 million. HEEF was created by tribal ordinance, through a tribal resolution, to preserve and protect the education fund. The Hopi Endowment Education Fund, receives most of its annual funding from Peabody Energy (formally Peabody Western Coal Company) – based coal revenues.<sup>53</sup> The Hopi Tribe's goal is to help Hopi members further their education through the education fund. The Hopi Tribe's Higher Education program works with graduating seniors and other tribal members who want to further their education. As a result of the Mohave Generating Station closure in 2005, funding has been cut dramatically for Hopi education, including individual scholarships.<sup>54</sup> For example, in 2005 the Hopi Tribe received just over \$1.9 million in educational funding from Peabody Western Coal Company stated in a letter from Hopi Vice Chairman Honyaoma, Letter to OSMRE, February 6, 2007. In 2006 the figure dropped to \$169,000 and in 2007 the figure remained at \$170,000<sup>55</sup> due to the shut down of Mohave Generating Station.

All vocational training programs are off-reservation in Flagstaff or even as far as Albuquerque and Phoenix. The training options are limited to demand occupations where graduates can get jobs. There are options for local training provided by Northland Pioneer College (NPC). Northland Pioneer College is located in a separate permanent structure. It has issued Certificates of Proficiency in Restaurant Operations, accounting,

---

<sup>53</sup> Socioeconomic Study in Support of a Hydrographic Survey Report for the Hopi Indian Reservation Socioeconomic Study April 30, 2008. Prepared by SWCA Environmental Consultants for Arizona Department of Water Resources. Pg. at 27

<sup>54</sup> *Ibid* at pg 27

<sup>55</sup> *Ibid* at pg 27

Emergency Medical Training (EMT) and Medical Assistant; all of which are careers needed on Hopi.

The 2010 tribal data base shows, 68.2% of the Hopi population over the age of 18 are high school graduates. Of the 68.2%, 27.7% have attended at least some college and 18.6% have earned a college/university degree; 2.1% have attended business school and 12.7% have attended a vocational school.

Goal: Continue education K-12 through post-secondary incorporating the Hopi'lavayi program of Hopi language and culture curriculum.

Policies:

1. Continue working on Hopi core curriculum for all K-12 schools throughout the Hopi reservation.
2. The Tribe will work on incorporation of the Hopi language and culture in the core curriculum.
3. The Tribe will work on supporting all schools.
4. Continue to support Hopi Education through challenges and changes in curriculum standards.

## **Water**

The nature, occurrence, and availability of groundwater are critical concerns of the Hopi Tribe.<sup>56</sup> Groundwater, and more specifically the Navajo sandstone aquifer (N-aquifer), is the primary source of water for the 11 Hopi villages and numerous Navajo communities that adjoin the Hopi Reservation in the Black Mesa, Arizona area.<sup>57</sup> The N-aquifer is also the source of water to numerous springs and perennial water flows within the area's washes.<sup>58</sup> The springs have special religious significance within Hopi cultural

---

<sup>56</sup> Daniel B. Stephens & Associates, Inc., *Hopi Water Resources and the Effects of PWCC and Other N-aquifer Pumping*. Prepared for the Hopi Tribe, September 2, 2010.

<sup>57</sup> *Ibid* at pg 13

<sup>58</sup> *Ibid* at pg 14.

practices, and the perennial flows in the washes allow for a small amount of irrigated subsistence and cultural farming.<sup>59</sup>

### Infrastructure

The Hopi Tribal Council delegated authority to the Hopi Water Resources Program (WRP) to implement and enforce policies intended to ensure safe and dependable supply of water on the Reservation.<sup>60</sup> Policies have been developed in accordance with federal Safe Drinking Water Act (SDWA) and Clean Water Act (CWA) requirements.<sup>61</sup> More specifically, Hopi Tribe Resolution H-107-97 enacted the Hopi Water Code, made up of three guidance documents developed in accordance with principals of sound water management and protection.<sup>62</sup> Since April 2008, the Hopi Tribe was authorized as Treatment as State (TAS) status, giving them the authority to oversee Clean Water Act Section 401 certification of National Pollutant Discharge Elimination System (NPDES) for discharge. This certification and approvals for all NPDES permits are under the authority of the Hopi Tribe Water Resources Program (WRP). This includes, but is not limited to, the Peabody Energy NPDES permits to construction site NPDES permits.

- Hopi Tribe Water Quality Standards (Hopi, 1997a)<sup>63</sup>
- Hopi Tribe Wellhead Protection Manual (Hopi 1996a, and as amended in 2001)
- Standard Specifications for Well Construction and Pump Installation (Hopi, 1996b)
- The Preliminary Hopi Wastewater Code
- Treatment as a State (TAS) for CWA Sections 106 and 319; 401 Certification for National Pollution Discharge Elimination System (NPDES) permits and Storm water Protection Plan (SWAPP) approval.
- Ordinance #58 Wellhead and Source Water Protection
- Clean Water Action Section 106 Program
- Clean Water Action Section 319 Program

---

<sup>59</sup> *Ibid at pg 14.*

<sup>60</sup> Tetra Tech EM Inc. *Hopi Source Water Assessments 2009.*

<sup>61</sup> *Ibid at pg 14*

<sup>62</sup> *Ibid at page 14*

<sup>63</sup> Note: the current Hopi Tribe Water Code is going through some revisions and amendments from the Water Resources Program so existing water policy may be amended.

- Clean Water Action Section 104(b)(3) Program.

Most villages have access to public utilities – water, sewer, electricity and telephone. The traditional villages maintain their beliefs and are unwilling to accept federal financial aid for an upgrade to modern amenities and infrastructure.

The traditional villages such as Hotevilla has electricity, water and a sewer system that was completed in the late 1990s; only on the outskirts of the traditional Hopi village housing. Oraibi and Walpi do not have water, electricity and sewage systems and do not allow utilities within their village.

All water and sewer systems have been developed with federal assistance from the Department of Housing and Urban Development (HUD), the Indian Health Service (IHS), US Environmental Protection Agency (US EPA), Office of Environmental Health (OEH) through Indian Health Service, and the Bureau of Indian Affairs (BIA). To determine if future water and sewer infrastructure projects will meet local needs and desires, the IHS and EPA requests each village to identify and set priorities for its water and sanitation needs on a yearly basis. Supplemental information, such as areas of planned village expansions, is also gathered to help plan future projects. The IHS OEH program work with villages on plans designs and constructs most water systems on Hopi.

The funds provided by various entities do allow for upgrades in existing village infrastructure; however, what is key with IHS/OEH funds is that the future growth or expansion for small commercial development is not incorporated into that equation for growth. Many projected village expansions or planned economic development structures at most are not built due to not having the infrastructure for the facility. One example, a small commercial development was being planned; but the sewer was a huge concern due to the existing infrastructure not being able to take on this additional commercial load on top of the existing village load. This is the story throughout the villages, which is not only an issue for economic development, but also for adding on additional homes for families seeking home sites. The load just cannot, in some cases meet growth demands. Therefore, federal funds through IHS and OEH limits the villages' future capacity building not just for the increase in housing developments, but for other indirect commercial development of those individuals wanting to start their own business due to having a home built on Hopi.

### Water Quality

The Hopi Tribe faces challenges in ensuring high-quality water for all reservation residents – water that meets national drinking standards by the EPA.<sup>64</sup> The villages throughout the Hopi Reservation depend almost exclusively on the N-aquifer for drinking water.<sup>65</sup> The water quality of the N-aquifer as a source of drinking water on the Reservation, with a few notable exceptions, is generally good to excellent.<sup>66</sup> At Second Mesa and First Mesa, the N-aquifer thickness shrinks to around 200 feet, leaving very little room for well expansion and giving rise to overlapping drawdown zones produced by competing village wells.<sup>67</sup> In addition, overlying aquifers with power quality/ high total dissolved solids (TDS), such as the D-aquifer, lead into the N-aquifer and cause water quality issues for villages located on the two mesas.<sup>68</sup> Many villages have a concern for these water quality occurrences. As stated by the Water Resources Program, much of what has been researched in the area the leakage is naturally occurring. The wells are outdated as far as full construction; old wells currently do not meet the current Hopi Water Code for well construction and specifications.

The villages at First and Second Mesa have high levels of arsenic, beginning from 17 up to 26 parts per billion (ppb), which exceed the EPA standards of 10 ppb, and treatment is required.<sup>69</sup> The Hopi Tribe applied for and was approved for various funds through US EPA and OEH for feasibility studies to be conducted and have concluded through the Hopi Arsenic Mitigation Project (HAMP) the alternative for improving water quality from First to Second Mesa villages.

### Water/Wastewater

In the Hopi villages many homes lack indoor plumbing facilities compared to other Indian Reservations. The difficulty of bringing in water lines is shown by the

---

<sup>64</sup> Socioeconomic Study in Support of a Hydrographic Survey Report for the Hopi Indian Reservation Submitted to Arizona Department of Water Resources by SWCA Environmental Consultants April 2008.

<sup>65</sup> *Ibid at pg. 30*

<sup>66</sup> *Ibid at pg. 30*

<sup>67</sup> *Ibid at pg. 30*

<sup>68</sup> *Ibid at pg. 30*

<sup>69</sup> Tetra Tech Inc. 2006. Source Water Assessment for Communities and Villages of the Hopi Reservation.

percentage of homes having to get water from “some other source” which might be a village well (hauling water to and from location), a spring or, more recently, the purchase of bottled water as the usual sources become too polluted to use for drinking and cooking purposes.<sup>70</sup>

Hopi Infrastructure Compared to All Reservations<sup>71</sup>

	<b>HOPI</b>	<b>All Reservations and trust lands</b>
Water from public system or private company	76.5%	70.3%
Water from individual well	7.7%	22.8%
Water from some other source	15.8%	7.0%
Percent lacking complete kitchen facilities	30.6%	17.5%
Percent lacking complete plumbing facilities	46.7%	20.2%

Villages depend uniquely on the groundwater source, Navajo Sandstone Aquifer (N-aquifer) from the wells for their water supplies. Current wells range from 150 to 1,800 feet deep (in the N-aquifer) and yield an average 10 to 200 gallons per minute. The deepest well on reservation is 3,200 feet and is drilled into the Coconino aquifer at Upper Village of Moenkopi.<sup>72</sup> Villages that do not have water piped to individual homes rely around public water faucets/spikets located in the villages. The Navajo Tribal Utility Authority (NTUA) provides water to the Spider Mound community, because the local well exceeds fluoride limits per Safe Drinking Water Act (SDWA). NTUA does offer a pay for water system from Tuba City; however, a majority of the residents on Hopi that do haul water get it from family members’ taps in the Villages of Upper and Lower Moenkopi. Lower Moenkopi utilizes water from the local spring for domestic purposes by hauling water. Other rural homes/scattered home sites can be served by cistern or water hauled in by pickup truck from local Moenkopi wells and springs. The Lower Village of Moenkopi has a facility for restroom and bath house facilities for those residents that do not have running water in the home and for hauling water.

<sup>70</sup> 2010 Hopi Comprehensive Economic Development Strategy Prepared by The Office of Planning and Evaluation under an award from the U.S. Department of Economic Development Administration Project #07-84-06439.

<sup>71</sup> *The Current State of Technology Infrastructure in Native Communities*, Prepared for the Economic Development Administration

<sup>72</sup> Note: The Coconino Aquifer (C-Aquifer) was tested with having high Total Dissolved Solids (TDS); however yield is high. The Villages in Moenkopi are utilizing this well through reverse osmosis treatment.



The treatment for drinking water varies by village or location on the Hopi reservation. The Keams Canyon's water supply is chlorinated. Water supplied to the villages of Upper Moenkopi, Kykotsmovi, Shungopavi, Mishongnovi, and Sipaulovi is chlorinated, which is treatment to satisfy the Safe Drinking Water Act (SDWA) requirements for a public drinking water system. Water fluoridation is the controlled addition of fluoride to a public water supply to reduce tooth decay. No village fluoridates its water, there is some naturally occurring fluoride in some water systems but none is added. The villages sample and test their water supply for quality. All drinking water systems on Hopi report water samples to the United States Environmental Protection Agency (EPA) through the Safe Drinking Water Act and Clean Water Act (wastewater) all Public Water Supply System (PWSS) report to EPA Region 9. Region 9 covers the states of Arizona, Nevada, California and the Pacific Islands. All systems must do a Consumer Confidence Report (CCR) and report the prior year's sampling that may have exceeded any Maximum Contaminate Levels (MCLs) and any other violations that the PWS may have received during the year to the public and give a certified copy to EPA.

Of the 15 wells serving villages, three are threatened with contamination<sup>73</sup> and three are contaminated.<sup>74</sup> Village wells in the past were drilled too close together creating an overlapping use of one source. The Hopi WRP has a well drilling ordinance that looks at spacing future planned wells so that wellhead protection exists.

A majority of existing water and wastewater treatment systems were not built to accommodate growth of the local population or for economic development purposes since implemented 60 years ago. The operation, maintenance and repairs for the systems tend to be heavily subsidized by village governments' annual budget. The majority of the villages do charge flat rate fee, however some villages such as Sipaulovi charge a metered rate and many more are moving in this direction. There is no separate charge for

---

<sup>73</sup> There has been extensive investigative work done by US EPA and there has been no evidence that these wells are threatened by the gas plume from the Leaking Underground Storage Tank (LUST) site per WRP ongoing oversight.

<sup>74</sup> Note: the Mishongnovi new well is contaminated with sulphur reducing bacteria, which creates a rotten egg smell. This well is off-line, and not being used. The Spider Mound well has elevated fluoride levels, and is operating under a variance from the EPA. Spider Mound receives water from NTUA and is no longer utilizing the well. The Shungopavi well has been contaminated with shigella. It is still being used, but chlorination is occurring very regularly to prevent disease.

sewage system disposal. Most villages experience significant problems with their water infrastructure, including:<sup>75</sup>

- Broken pumps
- Pumping for long periods of time without resting the equipment (i.e., water is hauled for livestock watering; systems were designed for domestic demand only).
- Erratic pressure, small pipe diameters, and insufficient storage capacity obstruct fire suppression.
- Unaccountable losses (leaks or aging pipes)

Many Hopi villages have deficient sewage treatment systems while other villages have none at all. There are no tribal restrictions on construction of wastewater systems in floodplains.<sup>76</sup> Existing village systems tend to be located in wash channels, using a gravity-fed line, which reduces the capital cost of systems, as well as maintenance costs.<sup>77</sup> However, it also makes the systems vulnerable to erosion caused by flooding, with the potential for system failure and contamination of nearby streams or farmlands.<sup>78</sup> The Indian Health Services OEH office continues to be aware of these problems, and working with the Villages, the Hopi Tribe departments and programs, as well as other consultants/experts to remedy them through IHS funds.

Although there are functioning systems to be found across the reservation, wastewater management tends to be crisis driven and, therefore, is more expensive in the long run. Case by case crisis mode is not cost efficient in the long term, especially when planning on growth and expansion for housing and small commercial economic development. Many wastewater treatment systems, in the past were not lined and did not have a wastewater code to follow. Environmental and groundwater contaminants exist in most sewage lagoons, which depend in part on seepage into the alluvium for effective functioning. Some villages still have outhouses (outdoor bathrooms) that are not lined and are unsanitary. Most wastewater treatment locations and facilities must be improved to both sanitary and capacity planning and growth.

Continue protecting public health and safety by minimizing the risk of contamination of surface water, groundwater, soils, and all other natural resources by

---

<sup>75</sup> 2010 Hopi Comprehensive Economic Development Strategy Prepared by The Office of Planning and Evaluation under an award from the U.S. Department of Economic Development Administration Project #07-84-06439.

<sup>76</sup> *Ibid.*

<sup>77</sup> *Ibid.*

<sup>78</sup> The Water Resources Program is developing a Hopi Wastewater Code at the time of writing the IRMP. The Preliminary Draft was received in January 2001. As of 2010 the Code has still not been approved.

wastewater systems so that they will be available for drinking water, irrigation, and cultural uses for future generations.<sup>79</sup>

Goal: Increase water infrastructure for adequate delivery of safe drinking water.

Policies:

1. The Hopi Tribe shall continue to work on drinking water infrastructure improvements throughout the villages.
2. The Hopi Tribe shall continue to pursue funding opportunities for drinking water and wastewater infrastructure.
3. Proposed housing, commercial, small to light industrial and other proposed public facilities shall consult and work with Water Resources Program and Villages as part of the planning process for water and wastewater infrastructure.
4. Identify proposed Hopi Public Utility Authority (HPUA) goals and objectives to align with the Hopi Water Resources water codes.
5. Assure an adequate water supply for present and future uses for drinking and for planned sustainable economic development.
6. Develop and implement Navajo Sandstone aquifer (N-aquifer) management plan.
7. Balance water protection and use between religious and subsistence uses.
8. Increase and improve infrastructure for domestic and small to light industrial/commercial uses.

### **Solid Waste**

In earlier days, Hopi disposed of their refuse off the sides of the mesas in village designated community dumps. Many dumps had poor physical characteristics that compounded problems. Several were located in natural washes contributing to surface water and ground water contamination. Other dumpsites were located close to the villages and have a steep, high dumping face. These sites were often visible from miles away. In a few villages, combustible refuse was burned in masonry incinerators or simply thrown over the side of the mesas.

The Hopi Solid Waste Management Plan provides a system of public refuse collection with a centralized sanitary landfill. The current Hopi Solid Waste Sanitary

---

<sup>79</sup>Tetra Tech EM Inc. *Hopi Source Water Assessments 2009*.

Landfill occupies 100 acres and is projected to serve the Tribe and villages' needs for 25 years based on IHS projections of population and generated waste.

The Tribal government does subsidize solid waste collection on the reservation. Residents must rent dumpsters as well as paying additional fees for collection of large items or dumping additional loads at the landfill. As a result, some individuals illegally dump their solid waste in remote locations, most often in washes, to bypass these fees.

The Hopi Solid Waste Program cleaned up all historic mesa-side dumps. However, since there was no education component to change people's disposal habits, some dumps are being re-used again. Even when villagers make an effort for proper disposal, other village residents who do not rent dumpsters dispose of their refuse in the rented dumpsters of others, over the side of the mesa, or into the wash.

The year-round presence, and healthy populations of crows and ravens, which are pest species, can be traced to this continuous source of food for these "garbage" birds. The improper disposal of trash in illegal dumpsites has the effect of increasing the populations of these undesirable birds (crows and pigeons), thereby threatening the success of farmer fields and harvest. There is also a concern that wildlife may be picking up diseases from litter as well as the possibility that illegal dumps near raptor nests attract crows to the vicinity, thereby increasing the chances of them stealing raptor nests.

Goal: The Hopi Tribe shall continue to work on illegal dumps and help educate people on the issues surrounding solid waste.

Policies:

1. The Tribe shall be a leader in reducing solid waste and strive for a cleaner homeland.
2. The Tribe shall continue to pursue funding opportunities for solid waste, educational programs for solid waste flying all over the lands, and other aspects surrounding solid waste.
3. The Tribe shall work with the Navajo and Coconino County on future solid waste agreements and transfer stations.
4. Proposed housing, commercial, small to light industrial and other proposed public facilities shall consult and work with Solid Waste Program and Villages as part of the planning.
- 5.

### **Public Utilities**

Arizona Public Service (APS) and the Navajo Tribal Authority (NTUA) provide electrical services on the Hopi reservation. Approximately 65% of the Hopi homes have electricity. A majority of the homes and businesses with electricity are served by APS. A 69-kilovolt-transmission line provides electrical service from Holbrook (through the Navajo Nation) to a substation several miles west of Keams Canyon. From the substation, two 21-kilovolt lines branch off from substation east to Keams Canyon and finally westward to the villages ending on Third Mesa. The electrical lines within the villages usually range from 1.2 to 2.4 kilovolts. NTUA provides electrical service to seven Hopi relocation families who live several miles south of Jeddito to the new Hopi community Spider Mound. Another new Hopi proposed community could use NTUA for it has electric lines adjacent to the Hopi Reservation that could be extended as a power source for new development. The Villages of Moenkopi (northeast of the main Hopi reservation) have electricity service from APS that comes in to service the Navajo Community of Tuba City.

The cost of new service is dependent on the customer's location and power requirements. All extensions are considered on the basis of economic feasibility and each utility authority prepared separate cost estimates for each project. In 1999, APS and NTUA estimated an average cost of \$15,000 per mile for service that extends beyond present service areas.

Service from APS has "***brown out***" issues, which may last for several days, causing many villages to rely on back-up generators to ensure water service for drinking water. Delivery of clean safe drinking water is a priority. APS continues to work with the Hopi Tribe to address the number of brownouts that occur throughout the Hopi reservation causing continued struggle for reliance on energy sources for the tribal homelands.

### Telephone

The landline service provider for the Hopi Reservation is Hopi Tribe owned Hopi Telecommunications, Inc. (HTI). Service is provided to most of the Hopi villages and

outlying communities. The Hopi phone service only offers the most basic features and has not kept up with technology available in the rest of the country.

The cell phone service provider CellularOne of Northeast Arizona, serves the Hopi reservation. It offers a low-cost cellular phone service plan to tribal residents who previously were unable to obtain or afford cellular service. With support from the Universal Service Fund, individuals who meet eligibility requirements<sup>80</sup> are able to receive basic cellular service for as little as \$1.00 per month. CellularOne was the first wireless company in the United States to provide this service for low income areas. CellularOne has the capacity to upgrade the Hopi Tribe with better internet speed options than current internet options.

### Internet

The Tribe received a 5 year grant from the Economic Development Administration (EDA) to create a wireless, satellite, broadband connection to the Internet at two initial sites. The project has been delayed due to changes in personnel and tribal leadership. National Environmental Policy Agency (NEPA) clearances took a full year.

The Hopi Police Department, Tribal Courts, Hopi Health Care Center, Hopi High School and Northland Pioneer College were the first to be connected. One of the conditions of the grant is to partner with HTI to ensure proper operation, maintenance and repairs. The finished project will be operated by the HTI as a tribal utility for broadband internet and other wireless services for the Hopi tribe.

This project showcases the power of instant, global communication and creates e-commerce for economic development and job training opportunities for all members of the Hopi Tribe. The project will provide a fully operational system that addresses the need for Internet access, which the Hopi need in order to carry out a wide range of activities.

Upon completion, Hopi will be able to receive broadband, high speed Internet service and begin the implementation of e-commerce (specifically buying original art/jewelry/paintings/sculptures/baskets from many Hopi artists), distance learning and

---

<sup>80</sup> Adult tribal members (18 years or older) who demonstrate their participation in one or more social or medical service programs operated by a Federal, State or Tribal Agency.

on-site educational programs for secondary education. The proposal builds in the on-site job training of local operators and the development of entrepreneurial training opportunities in the areas of medical transcribing, graphics, drafting and other jobs that can be done via a personal computer at home.

Goal: Continue to create reliable high speed Internet and other telecommunication infrastructure both as upgrades and installation for future safety, growth and development throughout the Villages.

Policies:

1. The Tribe shall continue to work on telecommunication infrastructure throughout the homeland.
2. The Tribe shall continue to pursue funding opportunities for telecommunication and other Internet infrastructure for future growth.
3. Proposed housing, commercial, small to light industrial and other proposed public facilities shall consult and work with the Hopi Telecommunications Inc. and Villages as part of the planning process for future infrastructure.
4. The Tribe will pursue grants that will identify a connection to the Hopi Public Utility Authority (HPUA) process.

## **Public Utilities**

To promote quality of life, public utilities will provide and promote a healthful living environment. The Hopi Tribe passed a resolution H-039-2013 creating the Hopi Public Utility Authority (HPUA). HPUA will work on the following: management, operation, and maintenance of utility systems and services that are vital to the spiritual, cultural and economic welfare of the Hopi Tribe, the several self-governing Hopi Villages (the “Villages”), and other approved users of utilities of the Hopi Reservation.<sup>81</sup> The Hopi Tribe, through its Energy/Water Task Team (the “Team”) and advisors, has developed a Hopi Tribal ordinance entitled “Hopi Public Utility Authority and Hopi Public Utility Commission Establishment Act” (the “Ordinance”) under Hopi Tribal Council Resolution H-039-2013.

---

<sup>81</sup> Hopi Tribal Council Resolution H-039-2013, Passed May 15, 2013.

Goal: The desire for self-determination and economic growth.

Policies:

1. The Tribe shall continue to pursue funding opportunities for the growth of public utilities under current legislative incentives for tribal enterprises.
2. The existing electric utility is unreliable.
3. The existing electric utility may be reluctant to expand service at a reasonable cost.
4. The Tribe will continue to work on the development of ordinances and policies for implementation.
5. Proposed housing, commercial, small to light industrial and other proposed public facilities shall consult and work with Water Resources Program and Villages as part of the planning process for water and wastewater infrastructure along side the proposed Hopi Public Utilities.
6. Encourage the villages to upgrade and build new water and sewer systems that will meet current growth and quality of life due to existing dissatisfaction with current electricity supplier.
7. New residential communities and commercial development could be located in areas where power, telephone service, water and sewer services can be provided.
8. Technical assistance for transmission studies.
9. Work with approved rate-payers and participants in order to provide safe and reliable utility services at reasonable costs.

## **Energy**

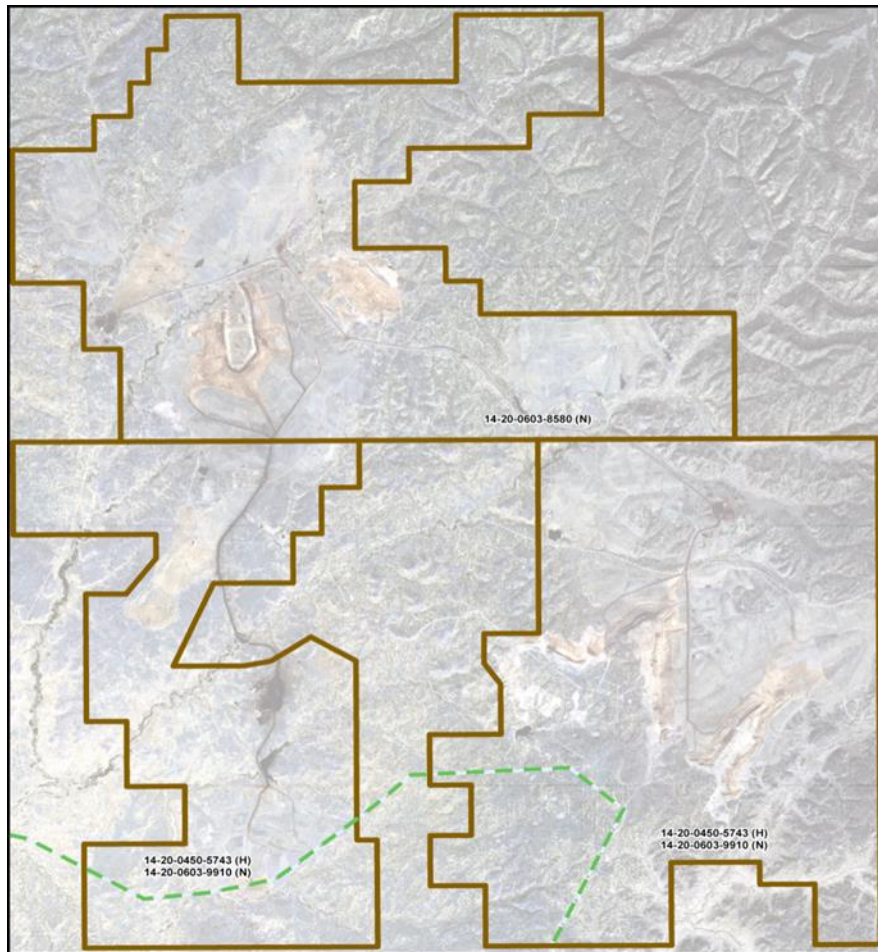
The Hopi Tribe has had a partnership with the Navajo Nation and with Peabody Energy (formerly known as Peabody Western Coal Company) for over 40 years to provide energy through the Navajo Generating Station (NGS) power plant and the former Mohave Generating Station (MGS), shut down in December 2005. The next decade for this partnership may be occupied trying to preserve the Hopi and Navajo coal-based economies in the every changing and emerging clean coal and carbon constrained movement, known as climate change.

The Hopi Tribe continues to work on developing an energy resource development policy that will serve as a guide in developing Hopi energy resources. The Hopi Tribe



under the proposed policy would in fact develop and manage all energy resources, identify ways to generate economic development of these resources, while maintaining protection of lands and cultural resources of the Hopi lands. The Hopi resources are diverse, to include: coal, coal-bed methane, natural gas, oil, solar and wind. Energy development has played an important role in the overall economy verses any other employment center across the Hopi reservation.

#### Lease Areas at the Black Mesa Complex



The national policy on climate change seeks to lower overall carbon dioxide (CO<sub>2</sub>) emissions. CO<sub>2</sub> emissions from coal-fired power plants are deemed a major contributor to global warming and climate change. This federal policy has led to the imposition of more stringent regulatory requirements for coal-fired power plants. The American Clean Energy and Security Act of 2009 (the “Act”) was passed by Congress

and requires stricter regulation of existing power plants. The economic impact on coal from increased regulatory emissions restrictions forcing coal, once the Tribe's most valuable economic asset, into retreat in the new clean coal and carbon constrained economy. The Act has set up a downward spiral for coal, a national trend that already forced the loss of the MGS power plant in 2005, along with the revenues it once provided the tribe. While Hopi coal sales from the Kayenta Mine complex to NGS continue to provide significant and absolutely critical revenues to the Hopi Tribe, the future of that revenue source is increasingly uncertain in the face of federal climate change policies. The future outlook for NGS remaining may foresee continual analysis past 2019 due to national and even future state climate policy.

The mine has three coal leases with Peabody Energy, one Hopi Lease and two Navajo leases. The former Joint Use Area (JUA) coal owned jointly by Navajo and Hopi, which is about 40,000 acres leased in 1966. The Hopi Partitioned Land (HPL) is about 6,137 acres. The Navajo Partitioned Lands (NPL) is about 33,863 acres. The Lease is north of the 1882 Hopi Reservation the coal is exclusively Navajo Nation about 24,858 acres which were leased in 1964. Most of the minable surface is on the Navajo Nation Reservation.

The histories of the leases are as follows: the Leases and their amendments, as negotiated by the Hopi and Navajo tribes, determine the amount of coal that Peabody can mine. OSM does not make this determination. OSM determines the scope of the mining Permit and the mining Plan under which the coal under contract with the Tribes will be mined. Hopi and Navajo 1966 Joint Use Lease area set initial coal tonnage at 200 million tons. In 1987 the Hopi and Navajo Tribes agreed to Lease amendments that added an additional 180 million tons under the Joint Use Area Leases for a total of 380 million tons. Of this amount, 200 million tons was mined out by 2006. The Navajo exclusive area lease of 1964 set initial coal tonnage at 200 million tons. In 1987, the Navajo Nation agreed to lease amendments that added an additional 90 million tons under the Navajo exclusive use area lease for a total of 290 million tons. Of this amount, the original 200 million tons will be mined out by about 2011.

The Hopi Tribe will review the tonnages and other aspects to the lease agreements due to the proposed Kayenta Mine Complex Environmental Impact Statement (KMC

EIS) which is underway for the Navajo Generating Station (NGS) coal fire power plant located in Page, Arizona. The National Environmental Protection Act (NEPA) policy process for conducting an EIS is going to evaluate the Hopi Tribe and how the socioeconomics, the water and other aspects linked to the NGS power plant.

The Hopi and the Navajo Nations depend on their abundant coal and mineral resources as the backbone of their local economies. Current coal revenues represent 88%<sup>82</sup> of the Hopi Tribe's annual income and annual operating budget. Potential Hopi economic development projects aimed at developing new coal markets have included a rail delivery system to transport the coal off the reservation to other markets via the BNSF rail. Such plans may not be feasible in light of federal policies and environmental opposition that does not favor expanded coal development. The Hopi Tribe continues to explore, and supports the funding of economic projects for coal gasification, solar/wind generation and other energy alternative strategies.

This CEDS plan recognizes the need to increase support for energy diversification for the Hopi people on both ends – new energy alternatives as a back-up or potential replacement for energy currently provided by APS as the reservation's sole energy provider and for sources of revenue as alternatives to the heavy reliance on sale of coal to the NGS power plant as the Tribe's chief revenue source. Continued reliance by Hopi on this single source of revenues could prove catastrophic to the Hopi economy if the NGS plant shuts in the short term. Given the current direction of federal policy on climate change and carbon emissions, the Hopi government must precede on the assumption that the NGS plant will close – it's just a question of when this will occur. Reliable energy is critical to the health, safety and prosperity of all residents of the Hopi Tribe.

Energy is vital in creating and maintaining a vibrant homeland through everyday life; from safe drinking water to the traditional values of the Hopi way of life. Sustainability for current and proposed land development and use is key to economic development decisions. The Tribe has a responsibility to be a leader in a variety in proposed and innovative energy and renewable energy, including natural resource management while supporting secure and clean energy technologies for its people.

---

<sup>82</sup> *Analysis of Economic Impacts on the Hopi Tribe and Navajo Nation of a Stringent NOx BART Decision for the Navajo Generating Station, March 1, 2010*, Pg. 39. Prepared for the Hopi Tribe. ICF Resources, LLC, Fairfax, VA 22031 *Letter Dated March 1, 2010 from Leroy Shingoitewa, Chairman, Hopi Tribal Council, to Jared Blumenfeld, EPA; Document number 0211 in the docent for the ANPRM: EPA-OAR-2009-0598.*

The Hopi Tribe has an opportunity to seek funding and technical assistance through the U.S. Department of Energy (DOE) Office of Indian Energy Policy and Programs, which was established by Congress to provide Tribes, Alaska Natives, and eligible tribal entities with technical and financial assistance to encourage, energy infrastructure development in Indian Country. Energy development and technology changes daily, requiring continued updates by way of education, training and other types of course preparation and curriculum. The Hopi Tribe could work with DOE on various aspects of technical assistance looking at how to develop an energy policy that will strengthen both energy security and energy infrastructure (if clean coal energy or renewable energy is projected in the near future) creating and promoting continued tribal sovereignty.

Reliable energy is critical to the health, safety and prosperity of all residents of the Hopi Tribe. Energy is vital in creating and maintaining a homeland through everyday life; from safe drinking water to the traditional values of the Hopi way of life. Sustainability for current and proposed land development and use is key to economic development decisions. The Tribe has a responsibility to be a leader in a variety for proposed and innovative energy and renewable energy, including natural resource management while supporting secure and clean energy technologies for its people.

### Overview

A Renewable Energy policy is being developed to work parallel to create sustainable energy for Hopi. Solar energy development has increased through various technologies that fit the physical characteristics of the Hopi land areas being surrounded by the Navajo Nation. Wind energy development for small domestic use to small/light industrial use can create sustainable back-up generation for homes when the main APS line has failures causing brownouts.

National policy on climate change is setting the stage for mandatory renewable generation requirements and/or goals; at least 34 states have passed voluntary standards or goals. The state of California has increased renewable generation at almost 50% of all energy consumed by its rate payers. The state of Hawaii has passed state law increasing renewable generation to 100% by 2045. This trend is creating more incentives to collect

renewable energy credits (RECs), of which these sales serve as supplemental revenue stream to energy and capacity revenues for the energy companies.

## **Renewable Energy**

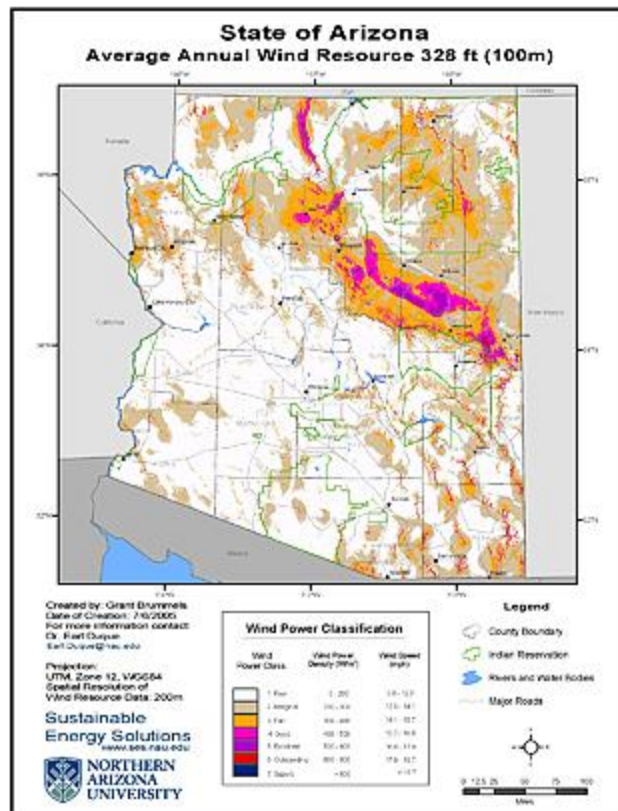
The Hopi Tribe has identified various plans that look at continuing coal development. Various reports exist that identify more coal reserves other than what is leased to Peabody Energy. However, given the land constraints to export coal to the larger market is a challenge. The various reports give a mining plan as well as economic models show potential markets. This has drastically changed due to the EPA Climate Change policy, creating obstacles to market Hopi coal.

### Clean Coal Energy

Potential liquefaction and gasification of coal could be potential as to the options to continue to identifying other revenue based coal development projects. The Hopi Tribe has potential to identify funding to seek more information about other coal energy development projects. This type of venture could potentially be built on Hopi creating another employment center for many Hopi tribal members. Plants similar to the Peabody Energy mining complex from construction to ongoing daily operations would generate a stable economy. However, the economic analysis referencing a viable market would be key from the southwest to the Midwest would be ideal power markets.

### Wind Power

Federal and state renewable energy maps indicate that there may be some potential to develop a wind power plant on Hopi and thereby generate new revenues. The average U.S. wind plant is approximately 50 MW (megawatt), which could be a potential energy source for Hopi and its members. However, small projects could be identified for a home located remotely, a school and/or tribal or other government structure to help subsidize energy use and save energy. The Hopi Tribe could utilize ways to create and encourage renewable energy.



Wind maps and power classifications are updated daily and the map above is from the Northern Arizona University Sustainable Energy Solutions program that conducts wind studies as well as continues to work with tribes on renewable energy education and research.

It must be pointed out that the return on investment in wind powered generation pales in comparison to current coal revenues. The estimates that have been generated show Hopi receiving revenues of \$233,333 per year (\$4,666 per MW per year) from a 50 MW wind plant verses the annual NGS revenues of \$13.5 million (varies due to the coal sales and market).<sup>83</sup> The Hopi Tribe would need approximately 57 wind plants of 50 megawatts each, just to replace current coal sales revenues. All of these wind power plants would likely never be constructed given Hopi cultural constraints on land use.

<sup>83</sup> Analysis of Economic Impacts on the Hopi Tribe and Navajo Nation of a Stringent NOx BART Decision for the Navajo Generating Station, March 1, 2010, Pg. 39. Prepared for the Hopi Tribe. ICF Resources, LLC, Fairfax, VA 22031 Letter Dated March 1, 2010 from Leroy Shingoitewa, Chairman, Hopi Tribal Council, to Jared Blumenfeld, EPA; Document number 0211 in the docent for the ANPRM: EPA-OAR-2009-0598.

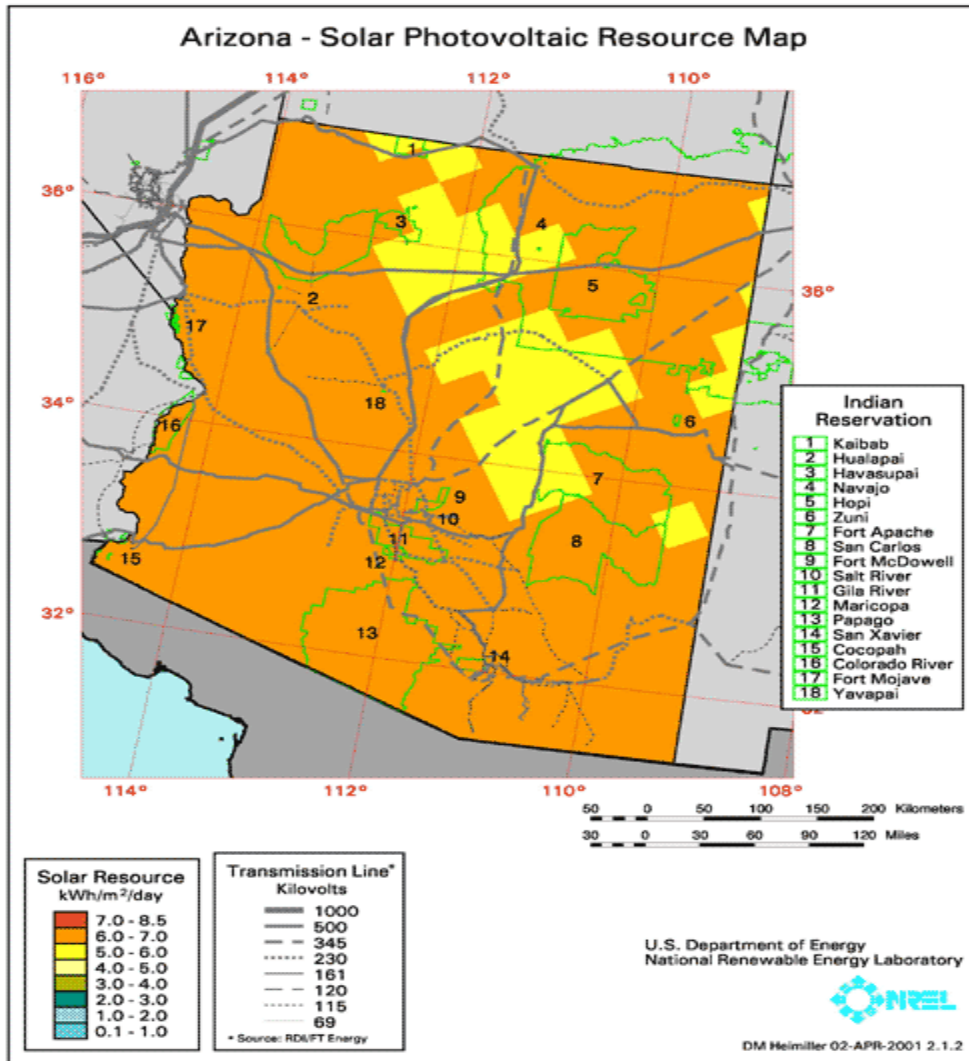
While wind resource development should be explored, it is likely to be a limited economic resource for the Hopi.

Reviewing the wind maps, it appears that the Hopi reservation would be a Class 2/Marginal and Class 3/Fair location for wind energy development; making Hopi marginally economically feasible to construct a wind plant. These classifications are according to the Energy Information Administration and the map does include the Hopi ranches, south of the main reservation near I-40. However, there is one Class 4 location; however it is not located on the Hopi reservation, but rather on the Hopi ranches. This Class 4 location does have potential for both wind and solar projects, more research and current technology could continue for the future renewable energy potential. An economic analysis and an updated feasibility study would need to be conducted to continue this concept for a wind plant.

#### Solar energy

There are many options when it comes to solar energy and the market demand to increase the use of renewable energy. Some photovoltaic (PV) plants average 2 MW, which could create reliable capacity by looping with existing energy infrastructure for Hopi. However, on a larger scale for revenue base solar plants, larger PV, micro grids, smart grids to solar thermal plants are beginning to increase. Technology for many of these solar options has increased over the last 5 years, due to increased research and development.

Solar energy maps from NM to AZ and its energy outlook with energy hubs. Arizona Solar Photovoltaic Resource map shows various locations for the resource and what transmission hubs that is near tribal reservations in Arizona.



The solar energy market over the years has increased and the potential with new improved technologies. The geographical solar maps have increased, creating competition throughout the southwest. Land base will be the key factor in the potential in creating a solar plant to be included into the regional to national solar market. The relationship between APS and the Tribe has potential to garner increased solar through PV.



### Microgrid

New solar technology through integrating both energy and renewable energy sources in one distribution line for secured power is increasing through research and development. Key components have been identified through research and development. The need for enhancing microgrid technology are summarized as:

- Facilities integration of combined heat and power (CHP);
- Promotes energy efficiency and reduces losses by locating generation near demand;
- Potential to reduce large capital investments by meeting increased consumption with locally generated power, (local generation may lower investment in the microgrid);
- Encourages third-party investment in the local grid and power supply.

These points give an outlook as the capital investment into some types of renewable energy developments; however, the question remains in the economic analysis and the basic question of reliability of the energy resource. The Hopi Tribe currently, as stated, continues to experience “brown outs”, which are of great concern due to compliance with the Safe Drinking Water Act (SDWA). Will wind be continuous or will it be only seasonal? Will solar be reliable or seasonal?

### Transmission

Of all the various options to renewable energy, one key aspect that needs further research would be the understanding how the Hopi Tribe can put this excess generated power on these large transmission lines, if the tribe created a large solar plant. The transmission highway will incorporate power purchase agreements (PPA), where the Hopi would need to have full knowledge of how these transmission lines are managed. The first step would be to first look at the power needs of the Hopi reservation. As such, when the Hopi power assessment is complete the next step would be the understanding of how the system is operated, maintained and repaired (OMR). On a smaller scale with room to grow and expand, the next assessment would be to work on a larger scale concept for renewable energy development. Questions may arise from the OMR analysis through an economic model showing how this may or may not be feasible. The feasibility of any

renewable energy system will then reveal to the Hopi tribe the bigger picture to the overall economic analysis.

Goals: Development and management of its own energy resources in a sustainable manner for proper development and management of energy resource development.

Policies:

1. The Tribe will work with the Office of Community Planning and Economic Development in coordination with the DNR Planner and Renewable Energy Office to prepare a planning and zoning document to set land aside for renewable energy development.
2. The Tribe will continue to work on an overall Hopi Tribal Energy Policy (or Ordinance) that will include all key renewable energy policy that is in line with the challenges of renewable energy development.
3. The Tribe will evaluate the potential demand drivers and the policy behind the demand.
4. The Tribe will increase energy infrastructure for domestic and small/light industrial/commercial uses.
5. The Tribe shall continue to pursue funding opportunities for technical assistance, research and development and outlook on future challenges and changes for renewable energy.
6. The Tribe will continue to update and review current data and technology upgrades for both solar and wind energy potentials for future development.
7. The Tribe shall continue to keep an eye on national policy regarding renewable energy policies that could affect the tribe.
8. The Tribe will work on a 2-4 year strategic plan that will be reviewed to ensure task items are being implemented.

## **Mineral Resources**

The Hopi Tribe has other types of minerals or natural deposits that could be potential economic development. There are various reports on the coal deposits that have not been mined. In other areas of Hopi, the development for other minerals such as sand, gravel and stone to meet local demands for construction materials. Review more sustainable mineral exploration and mining practices that degrade renewable resources. Conserve and protect mineral resources used for religious and subsistence purposes.

### Energy tax

The Hopi Tribe under Amendment G of the Constitution and Bylaws of the Hopi Tribe amended by adding a new article entitled ARTICLE XI – TAXATION to read as follows:

Section 1. The Hopi Tribal Council shall, subject to the express limitations contained in this Constitution and the laws of the United States, have the power to impose duties, fees, taxes and assessments on any person, corporation or association residing or doing business within the Hopi Reservation, PROVIDED, that the Tribal Council shall not have the power to impose a personal income tax.<sup>84</sup> This means that the Tribe could work with the new renewable energy projects and other clean coal energy projects to generate tribal revenue through an energy tax. However, the Hopi Tribal Council will have to send this to the Hopi people as a referendum.

### Market and Maps

Transmission studies showing viable existing markets to sell renewable energy due to the updates on the renewable energy capacity on transmission lines. A few years ago, the total renewable energy sharing electricity generation on main transmission lines was only at 9% according to the Energy Information Administration leaving coal generation on transmission lines still at a high of 48% of the U.S. electricity use. Dependability of wind and solar could be seasonal depending on the weather, but could be used as back up through storage.

Goal: Overall will be to identify other energy sources that could be implemented in place or in parallel with outlooks to replace coal revenue.

---

<sup>84</sup> Constitution and By-Laws of the Hopi Tribe Approved 19, 1936 (and as Amended on August 1, 1969, February 14, 1980 and December 7, 1993), United States Department of Interior Office of Indian Affairs.

Policies:

1. The Tribe shall work on an overall Hopi Tribal Energy Policy (Ordinance) that will include all energy development and mineral resources.
2. The Tribe will conduct various transmission studies for all future energy proposed projects.
3. The Tribe shall seek technical assistance funding opportunities for all energy and renewable energy. The technical assistance will evaluate proposed energy use as well as conservation measures.
4. Tribal Council has the authority to approve locations for new communities, subdivisions and individual home sites on the Hopi Partitioned Lands.
5. New housing should be located near water and other community facilities are available or can be provided.
6. Villages maintain policies for new housing, land assignments, and other home site areas in and around villages.
7. The Tribe shall continue to pursue funding opportunities for weatherization programs, educational programs for energy consumption and energy conservation.
8. Proposed housing, commercial, small to light industrial and other proposed public facilities to work on energy for Villages as part of the planning process for energy infrastructure alongside the proposed Hopi Public Utilities.
9. Create renewable energy to diversify mineral development such as continued coal diversification.

**Transportation**

The transportation system on the Reservation includes highways, local roads, an airstrip, and two helicopter landing pads.<sup>85</sup> The Hopi Tribe does not take usually take direct responsibility for public transportation facilities on the Reservation.<sup>86</sup> There are over 3,500 miles of unpaved, non-system roads across the Hopi Reservation, 700 miles of BIA system roads (both paved and unpaved), and 91 miles of paved, Arizona Department of Transport (ADOT) maintained roads. There are no Coconino or Navajo County constructed or maintained roads on the Hopi reservation. This is a total of 4,000+ miles of roads on the Hopi Reservation. Of these, approximately 800 miles are managed by the Integrated Reservation Roads System, a multi-jurisdictional road system that incorporates the State of Arizona, Coconino County, the Bureau of Indian Affairs Hopi Agency, the

---

<sup>85</sup> Socioeconomic Study in Support of a Hydrographic Survey Report for the Hopi Indian Reservation Submitted to Arizona Department of Water Resources by SWCA Environmental Consultants April 2008.

<sup>86</sup> *Ibid* at pg 26

Hopi Tribe and the Navajo Nation road maintenance agencies.<sup>87</sup> The remaining roads, most of which are little better than tracks, are “non”-system roads, and therefore are a Tribal responsibility to maintain or manage.

The Hopi Office of Range Management has developed and maintains a few “ranch roads” that are used by local cattlemen and farmers to access remote areas of the Reservation.<sup>88</sup> In addition, there are approximately 3,580 miles of non-maintained 4x4 trails and tracks mapped on the main reservation.<sup>89</sup>

No U.S. highways pass through the main reservation. Arizona State Highway 264 runs in an east-west direction and is the busiest highway on the reservation linking the villages. At the Arizona Highway 160 and 264 junction in Moenkopi starts the east-west road across the reservation, ending at Ya-Ta-Hey, 8 miles north of Gallup, New Mexico. Arizona Highway 87 is a secondary road that begins at Second Mesa and connects with Interstate 40 near Winslow. The third route is Indian Route 6 to Spider Mound, which is partially maintained by Arizona Department of Transportation (ADOT) Indian Route 6 runs north to south and connects on Interstate 40 near Holbrook.

The BIA Roads Branch maintains all Indian Route roads both paved and dirt, constituting over 600 miles of roads on the reservation. Indian Route 2 (Leupp Road) and Indian Route 6 (Holbrook Road) are paved secondary roads. The majority of BIA roads are unpaved local roads. The majority of these local roads are maintained due to school bus routes. These local roads are dirt, fair-weather roads that are often impassable in the winter snows and summer thunderstorms. Indian Route 2 links Kykotsmovi with Flagstaff covering 92 miles one-way. Indian Route 6 begins 8 miles east of Keams Canyon and ends at Interstate 40 covering 70 miles east of Holbrook.

Interstate 40 and U.S. Highway 160 are major routes that influence traffic patterns throughout Northern Arizona. Interstate 40 lies about 35 miles south of the reservation and is one of the principle east-west Interstate highways in the United States. The Hart Ranch, part of the Hopi Three Canyon Ranch lies on both sides of Interstate 40 that runs east/west through the northern edge of the ranch. The ranch is accessible from Interstate

---

<sup>87</sup> *Ibid.* at 27

<sup>88</sup> Socioeconomic Study in Support of a Hydrographic Survey Report for the Hopi Indian Reservation Submitted to Arizona Department of Water Resources by SWCA Environmental Consultants April 2008. Pg 26.

<sup>89</sup> *Ibid* at pg. 26

40 by the Twin Arrows, Buffalo Range, Two Guns and Meteor Crater interchanges. U.S. Highway 160 runs north/south on the western side of the Hopi Reservation adjacent to the communities of Upper and Lower Moenkopi.

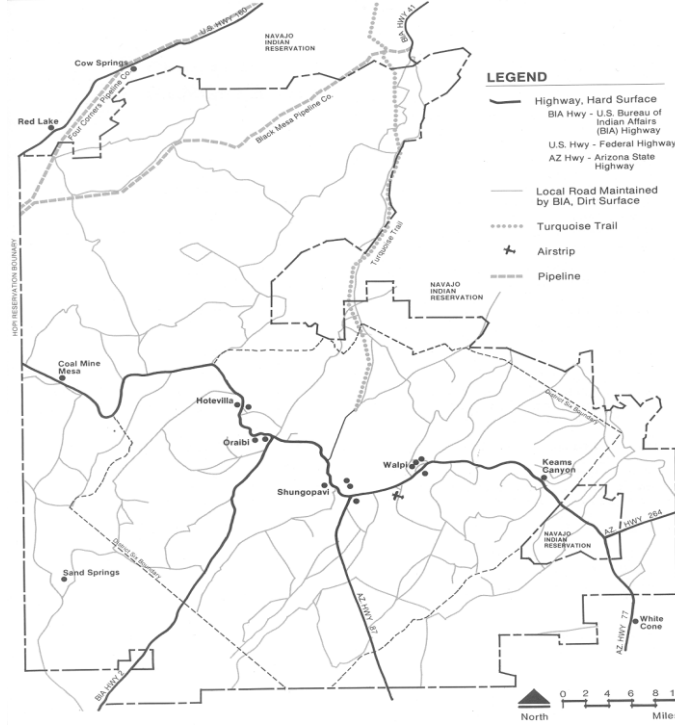
Polacca Airstrip, located 2 miles west of Polacca, is available for charter or private usage. The primary use is medical evacuation and personal transportation. The airstrip consists of a 4,200-foot paved and lighted runway, a paved parking apron for 12 aircraft, a graded entrance road and a parking lot. Polacca Airstrip requires frequent maintenance because of local flooding and poor soils. The BIA is responsible for road grading and runway upkeep. The Hopi Tribe maintains runway lights.

The present airport facilities need numerous improvements to increase safety and accessibility. These include extending and resurfacing the runway, paving the entrance road, fencing the airport perimeter and upgrading the runway lights. A site study and master plan was prepared in 1977.<sup>90</sup> It proposed improving the existing airport to meet immediate tribal needs and developing a new airport on Second Mesa. There is currently a grant to develop a comprehensive planning document on the current location for the airport and other safety improvement projects.

---

<sup>90</sup> PRC-R Dixon Speas Associates, 1977

## Hopi Comprehensive Economic Development Strategy 2015



Goal: Provide safety of roads through continued maintenance for all roads through the Hopi reservation.

Policies:

1. The Tribe shall continue to pursue funding opportunities for existing roads and proposed roads.
2. Encourage a safe and efficient transportation system for the reservation.
3. Inventory of all roads and road maintenance
4. New roads and streets should be located in areas with suitable soils, slopes and drainage.
5. Continued road safety through inspections of roads and bridges.
6. Dirt roads maintained for schools.

### Economic Development

The Hopi Tribe has over the years the framework to continue creating feasible economic development by and for the Hopi People. Economic development is not new to the Hopi government and its people. The coal deposits found on the Hopi reservation began the idea of economic development through jobs, revenue and independence over four decades ago through the negotiations over coal and water leases with the now Peabody Energy (formally known as Peabody Western Coal Company). The foundation set forth through historic coal negotiations

have set the stage for creating and working to diversify the state of economics for the Hopi people.

Over the course of time and new policy changes from federal to state EPA climate change policy, the future of coal development through sales to coal fire generated power plants, the Hopi tribe has been working on utilizing Hopi revenue to begin to diversify the economic base to create other ways of income. Although EPA climate change policy is a challenge the Hopi Tribe will continue to seek alternative ways to utilize its coal assets, yet to be mined.

The Hopi Tribe over the years has worked on off reservation economic opportunities, such as purchasing ranch land for a cattle business, purchasing commercial properties such as a truck stop, hotel, commercial shopping centers and even agricultural lands. Most of these lands are far from the main Hopi reservation and are in communities such as Holbrook and Flagstaff.

A list of off reservation properties include:

- Hopi Three Canyon Ranch - Winslow, AZ
  - Cattle ranching business owned by the Tribe, which operates the Drye, Hart, Clear Creek, Aja, and 26 Bar Ranches.
- Full service truck stop and travel plaza in Holbrook, Arizona
  - The Travel Center is comprised of a gas station with maintenance service; profit centers (such as leased space to Burger King, Full Service Restaurant and a store). The travel center employs 58 people. The travel center is a full service truck stop with all capacities of fuel, food and other amenities.
- Flagstaff Commercial Properties – Flagstaff, AZ
  - Continental Plaza Shopping Center, Kachina Square Shopping Center and Heritage Square Shopping Center are real estate property investments of the Hopi Development Corporation. The revenue stream derived from these properties is steady and predictable given the current market and property values in Flagstaff, Arizona. There are no employees, as the business is run and managed entirely under a contract with First Commercial Real Estate
- Kokopelli Hotel in Oak Creek Village/Sedona, Arizona
  - The Kokopelli Inn has a total of 48 rooms and 1 conference center/breakfast room. A total of 7 employees are currently employed (housekeeping; front desk and maintenance). The Inn currently breaks even because of recurring maintenance issues.

A short list of on reservation properties include:

- Hopi Cultural Center on Second Mesa
  - The Cultural Center currently employs 46 people (from the hotel to the restaurant). The business is currently above the monthly average of profit by 40%, due to the tourist season beginning a bit early this year.



- Housing unit to rent 75 homes near the Hopi Health Care Center
  - The Walpi Housing is managed by the HTEDC. The housing units are located next to the Hopi Health Care Center and the leases' are faculty/staff employed with the Health Care Center. The numbers of employees are estimated at 15. The housing is not a big economic profit and breaks even with maintenance and up keep of the housing units on a day to day basis.

Both on and off reservation investments are being sought to create jobs both on and off Hopi. A 13,200 acre Dobell Ranch and the 210 acre Twin Arrows parcel located on Interstate 40, 15 miles east of Flagstaff.

The Hopi economy through these various purchases encourages great opportunities through innovation and entrepreneurship for further investments. The Hopi Office of Community Planning and Economic Development (OCPED) and the Hopi Tribe Economic Development Corporation (HTEDC) both have a goal to set the guidelines, policies and procedures for development of a new business or continued business on and off the reservation lands. These procedures incorporate the Department of Natural Resources (DNR) as far as those departments that carry-out the Hopi Tribal Ordinances that help protect as well as create the Tribe's land, water, mineral and other resources. Each of these Hopi entities will create the foundation to create and build an economy, to support sustainable living.

The location for many Hopi land purchases are along the Interstate 40 (I-40) corridor which is a major outlet for tourists wanting to visit one of the seven wonders of the world, the Grand Canyon National Park. The attraction creates traffic of 33.2 million visitors from around the world to come see this spectacular wonder. The future Hopi potential business ventures that could conceivably include: RV parks, hotel/motels, restaurants, campgrounds, convenience stores with gasoline stations, small tourism galleries or museums, billboards, and small travel center with shopping centers. Other potential concepts could include small apartments to small single living units that could evolve into other small businesses. The list can be longer, however, the feasibility and financial analysis has to be profitable down the road in order to seek financial investors for such a big step. Various options utilizing the data collected should factor in the other surrounding variables such as the market and construction costs.

The Hopi Tribe's economic portfolio will include but not be limited to: Increase employment opportunities through construction and planning documents from village to tribal government sectors; Increase economic ventures through land planning and development policy

for future for light to small industrial development; and Incorporate regional sustainable economy involves sustainable diversification.

Goal: Increase and expand the Hopi Tribe's regional economic portfolio.

Policies:

1. The Tribe shall continue to pursue funding opportunities for all equitable economic development projects from developers and federal/state grants.
2. The Tribe shall create land use planning maps that have set aside commercial and industrial sites from encroachment by residential and other uses as the planning and zoning process. Proposed subdivisions, commercial, industrial, multifamily residential and public and semi-public use in compliance with the Office of Community Planning and Economic Development.
3. Increase Tribal investments in support for local economic development
4. Encourage individual self-entrepreneurship to establish small business enterprises
5. Support and increase job-training programs for all ages.
6. Protect the scenic and cultural vistas of the Hopi Reservation from roadside disorder that results from scattered, unplanned development.
7. Expand on ecotourism – educate on ecotourism
8. Cooperation and outreach to neighboring land owners for future cooperative ventures.

There are other factors that account for the lack of development on and off Hopi, results in nonexistence of capital investments into key utilities such as water, sewer and energy infrastructure.

### **Tourism and Travel**

The new friendly term for tourism is eco-tourism, which through Hopi history, the people and the Tribe have been practicing for many years. On a regional level as far as the state of Hopi, tourism is key to Hopi. The tourism that reaches Hopi is part of the \$1.9 billion dollars that comes in to the State of Arizona by way of the Grand Canyon and through the continued traditional ways of living by native peoples of the Southwest. The ways in which to capitalize on the tourism are undetermined given the lack of additional buildings or a central area to help Hopi entrepreneurs and the Hopi Tribe successfully capitalize on all tourism through buses or individual vehicles with tourists.

The data trends and research from the Arizona Office of Tourism dating from 2014 indicate that Arizona's warm weather and magnificent natural beauty makes tourism one of the

state's top export industries.<sup>91</sup> In 2013, **33.8 million people** visited Arizona collectively spending **\$19.8 billion** in the state. The money spent by visitors supports jobs and generates tax revenue.<sup>92</sup> The **\$2.7 billion** in 2013 tax revenue equals an annual tax savings of \$1,100 for every Arizona household and supported **163,500** industry jobs.<sup>93</sup>

This data resource from the Arizona Office of Tourism indicates the visitors that could visit Hopi lands for the historic culture, education and purchase of arts and crafts. The Grand Canyon, Interstate 40 and other National Parks in the area attract the regional diverse economic presence. The businesses that generate revenue are: hotels, restaurants, shopping and southwestern artifacts, directly creating jobs. Continued research into tourism commission with the knowledge of traditional and private culture, the social and cultural education can be incorporated into the creation of economic tourism. The tourism concept can generate more awareness and opportunities for growth and expansion on and off the Hopi reservation utilizing all existing properties. For the tribe to capitalize on the work of its Hopi artisans that live on/off reservation through silver/gold jewelry, turquoise jewelry, kachina carvings, sculptures, weaving and traditional designs, southwest clothing, pottery, plaques/baskets, paintings, moccasins and many other valued artwork. Although the world wide web through online sales for local artisans is also a viable way, sales from direct artisans is still a demand through local art galleries and shops (majority are out of the homes of the artisan) that are located in villages throughout Hopi.

The Hopi Tribe has the Hopi Cultural Center and Moencopi Legacy Inn and both are two prime locations that have the capacity to capitalize and manage tourism. The Hopi Cultural Center infrastructure and building is in need of improvements to become a highly beneficial asset for meeting space and hotel rooms.

The Moencopi Legacy Inn has the capacity through the Denny's restaurant and conference rooms to organize artisan workshops and other demonstrations, and it sits on the main corridor of Arizona highway 264 and 160 that has large tourist visitors to the four corners area for outdoor adventures and tourism. The Moencopi Legacy Inn has a swimming pool and an appealing lounge that is replicated from a Hopi house. The hotel is "the Gateway to Villages and Hopi", with various tours and other attractions listed for visitors and tourists. Many artisans from throughout Hopi are invited to come give a workshop on their artwork, are there to help

---

<sup>91</sup> Arizona Office of Tourism 2015 website <http://tourism.az.gov/> (bold emphasis on numbers).

<sup>92</sup> *Ibid.*

<sup>93</sup> *Ibid.*

educate foreigners or visitors of the Hopi way and traditions. The tours include a list of existing tours within each village, such as the tourist attraction located on First Mesa. Moencopi Legacy Inn will be looking at additional construction for phasing in additional commercial development.

Rehabilitation for marketing plazas and additional museums located throughout the Hopi villages could show case each village as they have subtle distinct differences from village to village when it comes to one of kind artisan creations. The Hopi Tribe's Economic Development Corporation (HTEDC) can seek funds through federal, state, private including the Tribe's own tribal funds to work on rehabilitation for many of the existing and future buildings; however, infrastructure is key to expansion for additional construction.

### Hopi Industrial Park

The 220-acre Hopi Industrial Park is located on the western edge of Winslow, south of the Burlington Northern Santa-Fe Railroad and old Route-66, which now serves as an I-40 access road.<sup>94</sup> The Hopi Housing Authority currently leases 25 acres on the western portion of the property, in Coconino County, and has constructed 33 multi-family units on eight acres of its site.<sup>95</sup> A vacant 115,000 square foot industrial building with 12 – 18 foot ceiling heights occupies a 15-acre site south of the housing and west of non-reservation multi-family housing that borders the Hopi property to the south.<sup>96</sup> This mostly pre-engineered steel building was constructed in 1968 for the Western Superior Corporation, makers of BVD underwear, who occupied the building until 1974.<sup>97</sup> The building was vacant until 1986 when the Young An Hat Company of Korea leased it, leaving in 1995. The building has been vacant since.<sup>98</sup>

This property has been identified as a resort facility near Hopi Industrial Park,<sup>99</sup> at one point and still could entertain the possibility as being the Gateway to Hopi from the southern entrance. As such, like many buildings located throughout Hopi, building renovations along with water, sewer and other electrical capital costs need updated to current construction dollars.

---

<sup>94</sup> 2010 Hopi Comprehensive Economic Development Strategy Prepared by The Office of Planning and Evaluation under an award from the U.S. Department of Economic Development Administration Project #07-84-06439

<sup>95</sup> *Ibid.*

<sup>96</sup> *Ibid.*

<sup>97</sup> *Ibid.*

<sup>98</sup> *Ibid.*

<sup>99</sup> 2014 plans – Hopi Tribe Industrial Park Update Strategy

These estimates that the building require from the last 2014 Hopi Industrial Park assessment update estimate at \$1.7 million dollars for a new roof, domestic water and fire pressure.

The OCP & ED office receives and reviews corporate proposals to lease and benefit from the Industrial Park building in Winslow, on Interstate 40 and near the Burlington Northern Santa-Fe Railroad, the Winslow airport and near the original Route 66. The prime location for the Industrial Park (small to light industrial commercial use) can create a large economic revenue venture. This property is located on the Hopi Reservation and is part of the trust land status, creating more complexities having the properties near a non-Indian community. This complexity can be a pro or con when dealing with commercial leases and or other aspects; however, case studies have proven that private corporations have worked alongside tribal entities proving medium to large commercial developments.

Goal: The goal for economic development will be to identify all assets, identify challenges, and identify the opportunities and the threats that can create obstacles that cause financial risks that will preserve the land in a sustainable manner by generating revenue.

Policies:

1. The Tribe shall continue to pursue funding opportunities for all proposed commercial developments and expansion.
2. Regular coordination and collaboration with surrounding neighbors, such as the Coconino County, Navajo Nation, Arizona Department of Transportation (ADOT) and private landowners.
3. Continued data projects utilizing the demographics, population, labor force and economic base indicators that could shift the economic trends in the areas of potential business ventures.
4. Land use planning and development outlooks for the challenges facing economic fluctuations given the national, state to local economies. Land use inventory to include planning and development prospects.
5. Partnerships with the Navajo Nation for various right-of-ways for on and off reservation properties such as: gas pipelines, fiber optics, water and sewer lines, roadways, electricity and other energy development developments.
6. Cultural sustainability and other collaboration with the Hopi Tribe's Department of Natural Resources office.

7. Continued job training for all ages in areas of hospitality, food service, entertainment, recreation, education in retail, health care and transportation, and arts and crafts.

## **Cultural Resources**

The Hopi people enrich the lands of Hopitutskwa (Hopi land) and existing Hopi lands where cultural, religious and traditional values continue. The Hopi Cultural Preservation Office (HCPO) is established to work with villages, village members and the Tribal government to help characterize the existing conditions of the cultural environment. HCPO works to help with archaeological and historical resources for the entire Hopi lands both on and off the main reservation. HCPO conducts studies, inventories, field surveys and other components related to Hopi culture. The studies of traditional cultural lifeways and resources both on the ground and traditional cultural resources when surveying for homes and/or proposed project sites. HCPO conduct surveys relevant for Section 106 of the National Historic Preservation Act (NHPA) and other cultural clearances necessary to preserve and protect Hopi cultural sites and resources.

The Hopi lands encompass the northeastern portion of Arizona, along with some areas located on Navajo lands. The traditional lands of the Hopi encompass a larger area not included into the existing reservation boundaries, leaving consultation for Section 106 having HCPO staff travel for cultural consultations.

Goal: Preserve the Hopi way of life through language and culture. Protect sacred places and subsistence gathering areas.

### **Policies:**

1. Continue to consult traditional leaders before land assignments are granted in culturally sensitive areas.
2. Develop an ordinance and applicable policies to protect culturally sensitive areas from new development and land use changes.
3. Prepare informational materials to instruct and educate tourists on the appropriate and proper behavior/mannerism that demonstrate sensitivity and respect to the Hopi people.

4. Develop necessary plans to establish a Hopi Tribal museum and cultural education facility.
5. Design and Construct a Hopi Tribal Archives for storage and maintenance of historically significant information/material and cultural/religious paraphernalia.

#### Hopi language.

1. Mandate all schools on the Hopi Reservation to include a Hopi language curriculum.
2. Seek funding to develop Hopi language programs for villages to include Hopi language and tapes.
3. Develop, adopt, fund and fully support a total Hopi language and cultural immersion program to be incorporated within the villages, communities, off-reservation Hopi organizations and educational systems on the Hopi reservation.

The goal is to provide adequate staffing for the Cultural Preservation Office to meet the internal requirements of Section 106 (National Historic Preservation Act) as requested from all entities.

#### **Land**

The Office of Hopi Lands Administration's (OHL) primary function is to protect the rights and interests of the Hopi Tribe and the Hopi people on the Hopi Partitioned Lands (HPL), 1934 Hopi Partitioned Lands – Moenkopi District, District Six, Hopi Three Canyon Ranches (HTCR), and other newly acquired lands. This encompasses 1.6+ million acres and newly acquired lands consisting of 305,596 acres, of which 160,167 acres was taken into Trust Status (HTCR).

The function and mission is accomplished by four OHLA Field Monitors monitoring activities throughout the Hopi Reservation with the submission of referrals and/or reports; trespass of all livestock, fence cutting, wildlife sightings, illegal cutting of green trees and/or harvest of fire wood (without permits) and vandalism of range infrastructures on the Reservation. OHLA provides assistance to all Department of Natural Resources (DNR) programs in conducting inventories, that include the GPS of land/property and agricultural sites, surveys of

water resources (springs and wet lands), illegal dumpsites (activities and monitoring), wildlife surveys, drought monitoring, livestock counts, livestock and feral horse round ups.

With the approval of the 1934 Intergovernmental Compact by the Hopi Tribe, Navajo Nation and the U.S. Secretary of Interior, the implementation of the 1934 Compact involves monitoring of the 1934 Navajo Reservation by OHLA, LIS, Hopi Cultural Preservation Office (HCPO), and Wildlife Ecosystem Management Program (WEMP) in conducting bi-annual monitoring of Non-Development Zones surrounding the golden eagle nesting sites. The program has provided extensive technical assistance in fieldwork and mapping with the implementation of the 1934 Compact, assisted and participated in the Mediation Process by providing logistical data on issues related to land use, identified Hopi shrines, springs, gathering areas and encroachment into Non-Development Zones.

Implementation of Public Law 93-531, as amended by Public Law 96-305, the Navajo-Hopi Land Settlement Act of 1974 and Public Law 104-301 continues. The OHLA provides administrative oversight of the Accommodation Agreement Leases (A.A.L.) and has served as liaison between the HPL Navajo families and the Tribe in addressing the issues that pertain to the lease agreements. This includes housing and infrastructure i.e.; electrical power line extensions, water wells/lines, sanitary facilities, road improvements, dispute resolution process, social services, and jurisdictional issues.

OHLA conducts an annual compliance inventory report of all A.A. home sites and agricultural sites used by the HPL Navajo families. These are submitted to the BIA for Navajo rental payments.

The OHLA continues to provide technical assistance to the Hopi Land Team in dealing with issues relating to the leases i.e.; termination, transfer and Navajo requests for housing and sanitation facilities construction needing Land Team review and approvals.

Another function of the OHLA is to conduct and process land assignments for home and agricultural sites and special land use for Hopi Tribal members and tribal organizations. Issuance of assignments has been on hold, while the Land Assignment Guidelines are updated and amended.

The OHLA staff have served as first responders to emergencies, some of which have been to natural disasters i.e.; heavy snow, rain/flooding, drought, missing persons search and



rescue incidents. The OHLA Director serves on the Hopi Emergency Response Team (HERT) as the Logistic Officer and has been involved in all emergency declarations.

## **Land Use**

The predominant land uses on the Reservation are agricultural and range, recreational, industrial, and community mixed use, which includes residential, institutional, commercial uses located in 14 clustered configurations, locally referred to as villages, and five existing Planned Community Development Districts (PCDD).<sup>100</sup>

Conserve and develop the land for the benefit of tribal members. Minimize conflicts between land uses.

Goal: To incorporate The Intergraded Resource Management Plan, (adopted May 2001)  
Department of Natural Resources

### **Policies:**

1. The Tribe shall continue pursuing funding opportunities for land use planning and policy development.
2. Hopi land use planning document to be created
3. Continue to use traditional ways to settle land disputes within District Six.
4. Recognize customary use area within District Six to continue making decisions about range management and land use planning.
5. Require all claims to land and resources on the Hopi Partitioned Land (HPL) to be supported by tribal land assignments or use permits per tribal ordinances. This policy will not restrict subsistence, religious, or traditional gathering activities on the HPL.
6. Respect to continue those uses of land and resources that sustain religious, subsistence, and economic and recreational activities.
7. Regulation and Enforcement over tribal lands through Hopi Tribal Court.

The goals below point out what has been working for the Office of Hopi Lands Administration over the years. These Goals and Objectives below are the main focus for the Office of Hopi Land Administration (OHLA) on a day to day basis. These were highlighted to be incorporated into the CEDS as it pertains to planning and management purposes.

---

<sup>100</sup> Socioeconomic Study in Support of a Hydrographic Survey Report for the Hopi Indian Reservation Socioeconomic Study April 30, 2008. Prepared by SWCA Environmental Consultants for Arizona Department of Water Resources.

Goal #1: The OHLA will look out for the interests and rights in protecting our natural resources for the Hopi Tribe and Hopi people on the HPL – Moenkopi District, District Six, 1934 Hopi Reservation and the newly acquired lands.

Objective: Continue to monitor activities that include unauthorized and illegal livestock trespass, vandalism of tribal property, fence lines, windmills, unauthorized construction by Navajo families, quit claim properties, the taking of Hopi resources i.e.; wood, sand, gravel, water and wildlife, and monitoring the Golden Eagle Nest Non-Development Zones on the 1934 Hopi Reservation.

Goal #2: Administration and implementation of the Accommodation Lease Agreements:

Objective: With the Hopi Tribe and the HPL Navajo families who have signed the A.A. to remain on the HPL, implementation of the A.A. continues. Issues/activities being addressed includes the following:

- Continue to coordinate with Hopi and Navajo Nation service providers to address social service and Navajo related jurisdictional issues.
- Continue to provide education on Hopi Ordinances and laws for HPL Navajo families. Assistance has been provided by the Hopi Resource Enforcement Services (HRES) and Office of Range Management (ORM) on the tribal ordinances relating to natural resources i.e.; grazing, woodlands, wildlife, trespassing, etc., as well as poaching for all game.
- Conduct feasibility studies for infrastructure, such as electrical power line extensions, water wells, water line extensions, roads, etc. to serve Hopi and Navajo families on the HPL. Work with the Indian Health Service (IHS), Office of Environmental Health & Engineering (OEH) on the approval and design construction of water cisterns and septic systems and specifications.
- Develop the conflict process to deal with problems/issues arising from the Accommodation Agreements, thereby avoiding court litigation. Currently, emphasis has been on the jurisdictional issues regarding the Hopi Tribal Courts and jurisdiction over domestic relations.

Goal #3: To continue to Implement the 1934 Intergovernmental Compact:

Objective: With the approval of the 1934 Intergovernmental Compact by the Hopi Tribe, Navajo Nation and the U.S. Secretary of Interior, the Implementation of the Compact will involve the following:

- The program will continue to monitor the Non-Development Zones for any new developments within the zones and reports the findings. The initial monitoring report is submitted to the Hopi Land Team for their review and the findings will be forwarded to

the Hopi members of the 1934 Board of Commissioners for their review and possible arbitration.

- OHLA along with LIS, HCPO and WEMP to conduct bi-annual monitoring of eagle nesting Non-Development Zones on the Navajo Reservation. Documenting new developments such as homes, electrical power lines, water lines, roads, corrals, windmills, etc. within these Zones. Violations and reports submitted to the Hopi Land Team for their review and submittal to the 1934 Commission.
- Meetings of the Golden Eagle Advisory Task Team need to continue to strategize on lobby efforts for funds to implement the 12 year Golden Eagle study.

Goal #4: Gain Complete Jurisdiction over all Hopi Tribal Lands.

Objective: To complete the Trust Taking of Newly Acquired Lands. Goals and Objectives #1, 2 and 3 are year round activities.

### **Agriculture**

The largest claims for water on the Reservation are for irrigation of agricultural lands. About 63% of the Reservation, or over 1 million acres, have been determined to have soils that could potentially grow crops if irrigated (ADWR, 2008). The Hopi have a long history of farming in the region and have developed traditional practices to adapt to a limited water supply and relatively harsh climate. The latter is characterized by strong winds, early and late frosts, and a semi-arid climate. Many traditional Hopi farming practices are still being used to grow crops on the Reservation today. This section describes historic, recent, and future water demands for agriculture on the Reservation and how these demands have been, and would be, met. Methods to quantify agricultural water demands are summarized first and provide a context for later discussions.

- Encourage traditional Hopi agriculture.
- Educate on drought conditions that have affected soil erosion and other soil changes.
- Develop irrigated agriculture in a way that maximized both employment and return on tribal investment.

### **Recreation**

Recreational areas are 4 lakes in the Keams Canyon area, known as Keams Lake, Lake Maho (also known as Upper Keams Lake) Twin Dam No. 1 and Twin Dam No. 2 located on the main Hopi Reservation. The Pasture Canyon located near Moenkopi Villages is also seen as a recreational area; however it is used for irrigation purposes.

Recently the Hopi Tribe and U.S. Fish & Wildlife Services worked with Hopi Wildlife Ecosystems Management Program (WEMP) stocking Beaver Dam (Pond) in Keams Canyon with 1,500 8 inch Rainbow Trout from the Whiteriver-Alchesay National Fish Hatchery in March 2015. There is a regulatory Ordinance #48, permitting a set time to fish and fish with permits only. Illegal fishing will result in a fine of \$50.00. Other proposed stocking of ponds will be Pasture Canyon, however it is under rehabilitation. Upon completion of all rehabilitation then it will be open for fishing, with permits.

Goals: Provide and maintain wildlife and stock ponds per the recreation mission.

Policies:

1. Support initiatives by the villages to provide and equip playgrounds and facilities for small children to adults
2. Protect areas of the reservation with high scenic value or cultural ties.
3. Improve existing recreation facilities.
4. Increase the variety of recreation opportunities on the reservation.
5. Increase to work on invasive species that have changed woodland areas.

## **Housing**

The availability of affordable housing on the Hopi Reservation is an increasing problem as the population grows. Many Hopi people have been forced to move off reservation for employment and/or the lack of housing. They cite not being able to build within the villages which are crowded to capacity, not being able to secure an uncontested land assignment on which to build, not being able to secure funding to build a home and not having opportunity to buy an existing home as the reasons. Many returning Hopi are unable to find a home site anywhere in District Six and must choose sites in the HPL without utilities or improved roads if they want to live on the Reservation. This further isolates them from family, from fully participating in the religious ceremonies and from needed tribal services.

The problem is not unique to Hopi families. Indian Health Service professionals and school teachers who work on the Hopi Reservation agree that lack of housing is a huge problem and often the number one deterrent in seeking employment on the Hopi Reservation.

The BIA and Indian Health Services provide rental housing at Keams Canyon. In addition, there are federal rentals for BIA teachers at the Hopi Junior/Senior High School and in

Polacca, Second Mesa, Kykotsmovi and Hotevilla. A small amount (33 units) of low-income housing is available on Hopi trust lands in Winslow. The Walpi Housing Project added 75 town home rental units which are managed by Hopi Tribal Economic Development Corporation (HTEDC). These are located at First Mesa and maintain a 99% occupancy rate.

Much of the housing found on the Reservation is public housing financed under Housing and Urban Development (HUD) programs and administered through the Hopi Tribal Housing Authority (HTHA).<sup>101</sup> Currently, the HTHA manages 230 homes through ownership and 33 as rentals (6 are low income and 27 are tax credit).<sup>102</sup> The HTHA has developed a 10 year plan beginning in 2010. A study identified most homes were built between 1969-1984<sup>103</sup> and are in need of repairs; of which, there are 208 housing units that need immediate work. The most serious problem is the roofs. Fifty units need complete replacement while 104 need repair. A total of 157 units need work on the building structure, stucco and other weatherization repairs. The HTHA now has a database of the condition of housing and the needs of people related to housing to use for future planning.

According to a survey conducted in 2000 for the Hopi Strategic Land Use Development plan, it was estimated that at least an additional 315 dwelling units were needed to alleviate the perceived overcrowding conditions, and another estimated 447 units are needed to replace the number of dwelling units considered to be beyond structural repair.<sup>104</sup> Assuming an average of four persons per dwelling unit (DU), this represents a need for 88 new dwelling units per year, or an additional 1,760 new dwelling units over the next 20 years (Hopi Tribe 2001b).<sup>105</sup>

The HTHA has obtained 15 brand new FEMA trailers that will be located on First Mesa. It is also working to obtain some trailers to locate in Upper Moenkopi. There are also plans to build some multi-family housing in Moenkopi.

HTHA is moving into providing the infrastructure necessary to support housing and also to be used for economic development projects on land the villages set aside. The HTHA provided \$100,000 to bring natural gas into Moenkopi. Currently First Mesa has designated 30 acres, Sipaulovi set aside 15 acres, Hotevilla has 57 acres and Moenkopi has a large area in the

---

<sup>101</sup> Socioeconomic Study in Support of a Hydrographic Survey Report for the Hopi Indian Reservation Submitted to Arizona Department of Water Resources by SWCA Environmental Consultants April 2008.

<sup>102</sup> *Ibid at pg 12*

<sup>103</sup> *Ibid at pg 12*

<sup>104</sup> *Ibid at pg 12*

<sup>105</sup> *Ibid at pg 12*

expanded village area where the hotel and other commercial enterprises are located. HTHA will work with the villages to develop these areas for economic development

Currently HTHA has the list of 2015 projects proposed for the next five years are:

- Warehouse Construction at Polacca and Winslow;
- Youth Center Subsurface Drainage System
- Spider Mound Developing: housing;
- Twin Arrows Development: housing;
- First Mesa Consolidated Villages Community Development Master
- 20 unit scattered site development proposals,
- 40 unit Winslow Development and site improvement
- 2 BIA HIP Homes
- Home Rehabilitation Program

Goal: Provide every Hopi family with decent, safe, and sanitary housing according to its individual needs. Allow tribal members to choose the location of their homes, subject to tribal policies

Policies:

1. Tribal Council has the authority to approve locations for new communities, subdivisions and individual home sites on the Hopi Partitioned Lands.
2. New housing should be located near existing housing where water and other community facilities are available or can be provided.
3. Villages maintain policies for new housing, land assignments, and other home site areas in and around villages

## **Community Participation**

The Hopi Comprehensive Development Plan, Parts I and II, of 1988, called the Hopit Tunatya'at was developed to formally establish goals and policies for the development and protection of Hopi land, resources and facilities.<sup>106</sup> In 1990 the Tribal Council approved an amendment to the Hopit Tunatya'at by adopting Part III of the plan.<sup>107</sup> This third section incorporated standards of land use planning and development and established a formal review and decision-making process.<sup>108</sup>

---

<sup>106</sup> 2010 Hopi Comprehensive Economic Development Strategy Prepared by The Office of Planning and Evaluation under an award from the U.S. Department of Economic Development Administration Project #07-84-06439.

<sup>107</sup> *Ibid.*

<sup>108</sup> *Ibid*

The Hopi Tribal Strategic Plan of 1994 reaffirmed most of the goals previously established, but added one new major area. In 1995 it was determined that the four major planning documents developed needed to be consolidated to provide a better understanding of the comprehensive and complex strategic issues. Established by tribal resolution the Hopit Pötskwaniat (Hopi Tribal Consolidated Strategic Plan of 1995) was first developed consolidating other tribal planning documents to establish one vision and a strategic plan to realize this vision.<sup>109</sup> The Hopit Tunya'at 1999 was an independent planning document.

The last Hopit Pötskwaniat was completed in 2011, holding public participation booths by departments/programs or other services at the Hopi Veterans Memorial Center. The responses included the various local governmental offices of BIA, IHS, Tribal and village community members. No other updates have been conducted since. The Hopi Tribe's DNR departments and programs along with the DNR Planner are currently working on outreach to the Hopi Villages and others to obtain feedback to work on improving community participation.

### **Public Services and Facilities**

The Hopi Tribal government continues to work on improving public facilities and services on the reservation.

Goal: Improve public facilities throughout the Hopi reservation.

Policies:

1. Give highest priority to medical care for all especially for proposed new elderly care facilities.
2. Provide support for increased law enforcement and other public safety awareness.
3. Support an on-going fire safety program, including local schools for inspections to make buildings fire safe. This includes having the water infrastructure to ensure fire protection for all private, school, public and tribal infrastructure.
4. Continue to support Hopi Education through challenges and changes in curriculum standards.
5. To work on invasive species that have changed woodland areas.

### **Department of Natural Resources**

The mission for the Department of Natural Resources (DNR) is twofold as listed below all the various Tribal Ordinances have been developed through the course of time to ensure and protect all cultural and natural resources. Being two-fold, the ordinances exist to help villages and

---

<sup>109</sup> Hopit Pötskwaniat (Hopi Tribal Consolidated Strategic Plan) November 29, 2011.

village members create a sustainable community and homeland. Some programs are amending some of the ordinances, which will be presented to the Hopi Tribal Council.

- Water Resources Program (WRP)
- Hopi Environmental Protection Office (HEPO)
  - General Assistance Program (GAP)
  - GAP Solid Waste Program
  - Pesticides Program
  - Leaking Underground Storage
- Hopi Cultural Preservation Office (HCPO)
- Office of Mining and Mineral Resources (OMMR)
  - Abandoned Mine and Lands Office (AML)
  - Hopi Surface Mining & Enforcement Program (HSMREP)
  - Equipment Rental Program
  - Uranium Mill Remedial Action Program (UMTRAP)
- Hopi Renewable Energy
- Land Information Systems (LIS)
- Range Management
  - Windmill Fence Construction & Maintenance
  - Hopi Veterinary Services
  - Hearing Board
  - Range Management Fund
  - Hopi Natural Resource Conservation Service (NRCS) Funding
  - Land Operations
  - Partitioned Lands
  - Safety of Dams
  - Dam Maintenance Program
- Hopi Resource Enforcement Services
- Hopi Solid Waste Management Program
- Office of Hopi Land Administration
- Wildlife & Ecosystems Management
- DNR Plans, Policies and Ordinances
- Hopi Integrated Resources Management Plan (Adopted May 2001)
- Hopi Tunatya'at 2000 – Hopi Strategic Land Use and Development Plan
- Hopi Pötskwaniat 2011 – Hopi Tribal Consolidated Strategic Plan
- Hopi Integrated Woodlands Management Plan (Adopted 2006)
- Hopi – BIA Wild Land Fire Management Plan (Adopted 2006)
- Hopi – FEMA Natural Hazard Mitigation Plan (Approved 2006)
- Hopi Drought Contingency Plan (Adopted August 2000)
- Hopi Tribal NEPA Compliance Process (Adopted 2001)
- Ordinance #26 Hopi Cultural Preservation Code
- Ordinance #43 Control of Livestock and Grazing
- Ordinance #44 Solid Waste Management
- Ordinance #47 Woodlands
- Ordinance #48 Wildlife & Hunting/Furbearer Trapping Regulations



- Ordinance #53 Civil Trespass – Hopi Water Code; Water Quality, Well Construction & Wellhead Protection
- Ordinance # 55 – Hopi Planning Ordinance
- Federal Laws & Regulations applicable to Hopi Indian Trust Lands and Assets

### **Strategic Projects, Programs and Activities of Hopi Tribal Government**

The Hopi Tribe and the departments/programs are currently working on existing projects listed that will help on the future plans for the Hopi economy diversification. These projects below are ongoing projects that work towards the goals for creating a local to regional Hopi economy. These projects may have funds or are looking at applying for funds. Continuing work for these projects and other proposed projects are all what is current and new for the Hopi Tribe, however many of these projects will take some time.

#### North Central Arizona Water Supply System (NCAWSS)

The North Central Arizona Water Supply System (NCAWSS)<sup>110</sup> Report of Findings is a regional water supply project that takes a look at various options for transporting water from Lake Powell western Navajo communities and Hopi reservations. The Appraisal Study included: 1) an identification of the current water supplies and demands, 2) an evaluation of whether or not there may be unmet municipal water demands on the Coconino Plateau through the year 2050, 3) a determination of whether or not there is at least one regional alternative to meet the future demand, and 4) a determination of whether or not there is a federal objective in which there is at least one regional alternative that can be recommended to be carried forward into Feasibility Study. The NCAWSS has a Technical Advisory Council (TAC) consists of various stakeholders from the Navajo Nation, Hopi Tribe, City of Page, City of Flagstaff, and other non-Indian communities. BOR completed and released the Report of Findings for the Appraisal Study in October 2006. The Report of Findings for this Study concluded that by the year 2050: 1) There will be an unmet water demand of more than 24,700 acre-feet of water annually for the Indian and non-Indian communities on the Coconino Plateau. 2) There is at least one alternative that exists to meet the projected unmet municipal water demands on the Coconino Plateau (the Study identified at least four); and 3) There is a federal objective to warrant going to the next phase, which is a Feasibility Study.

---

<sup>110</sup> The NCAWSS group falls under the Coconino Plateau Water Advisory Council (CPWAC) is an organization consisting of 28 federal, tribal, state and local government entities with land and water use management responsibilities, as well as public and private interests. The CPWAC was established in 2000 to facilitate and implement sound water resource management and conservation strategies on the Coconino Plateau in Northern Arizona. Since 2000, numerous studies have been completed by or at the request of the CPWAC working in concert with the U.S. Bureau of Reclamation (BOR) and the Arizona Department of Water Resources (ADWR). One such study that has been completed is the North Central Arizona Water Supply Appraisal Study (Appraisal Study).

There are a few design solutions to transporting water from Lake Powell through the a western pipeline that would come from Lake Powell, through western Navajo Nation by way of Moenkopi Villages ending at Second Mesa. There has been one select distribution route that has been identified and Tribal Council has allocated money to conduct work in conjunction with the U.S. Bureau of Reclamation (BOR) to continue feasibility study work for the Hopi Lateral. The project dollar amounts continue to be updated; currently the cost projections for the Hopi Lateral portion do not exceed \$200 million. The project work meetings are ongoing and are critical to the Hopi Tribe for future unmet water demands out to 2050.

#### Hopi Arsenic Mitigation Project (HAMP)

The drinking water arsenic solutions continue to evolve through the completion of the Life Cycle Cost Analysis and Comparison of Alternatives, Hopi Public Water System Strategic Plan, and Environmental Assessment, August 2014. This report gives recommended alternatives for the construction of a regional water system to serve First and Second Mesa with water on a wholesale basis. The HAMP is considered to be the more sustainable of the two primary alternatives analyzed, and will provide greater operability, reliability, efficiency, simplicity, cost effectiveness, and safety compared to the alternative of implementing water treatment systems in each village.<sup>111</sup> The keystone of the HAMP are two newly drilled Turquoise Trail Wells #2 and #3, which will serve as the new arsenic compliant water source for the villages of First and Second Mesa.<sup>112</sup> The water quality and quantity of the wells have both proved to be outstanding, with arsenic levels of 4.7 and 4.2 ppb, both less than half the US EPA maximum contaminant level for arsenic in drinking water.<sup>113</sup>

#### Tawa'ovi Infrastructure

Tribal Council adopted the Tawa'ovi Community Master Plan through the Office of Community Planning and Economic Development (OCPED). A Board of Directors for Tawa'ovi has been established to oversee the Administration of the project. A multijurisdictional plan will be developed to establish authority and responsibilities. The Tawa'ovi Board has identified potable and irrigation water resources. Existing wells will

---

<sup>111</sup> Preliminary Engineering Report for Hopi Arsenic Mitigation Alternatives IHS Projects PH12-E73, PH11-E55, PH10-E37, PH08-T38, PH06-D33 and PH04-S63. Prepared for The Hopi Tribe by Indian Health Service, August 2014.

<sup>112</sup> *Ibid.*

<sup>113</sup> *Ibid.*

be having been drilled and cased. Power resources have been identified, evaluated for cost effectiveness and contracts developed for service. Environmental and cultural clearances will be conducted. Engineering plans will be developed along with the other elements of the infrastructure phases. Land grading plans need to be developed and the land graded in core areas. All construction will be accomplished according to the phased development plan.

#### Hopi Tribal Housing Authority

A BIA Consolidation Report of Tribal Inventories of Housing needs identifies approximately 800 families in need of housing assistance with an additional 300 families needing rehabilitative assistance. The Tribe needs funding for low-income housing construction and for rehabilitation of existing structures. The Hopi Tribal Housing Authority (HTHA) program continues to work on providing assistance to families for future homes. HTHA program continues to work on its leadership and the policy program to ensure that quality affordable housing for those that qualify.

#### Hopi Cultural Center Motel and Restaurant

The Cultural Center is in need of renovation/rehabilitation and expansion. It provides the only overnight rooms on the main reservation, thus allowing only a small percentage of visitors to full experience the countryside and, more importantly, providing a place to spend money on the reservation. Professional services will be required to assist the HTEDC and the Hopi Cultural Center Enterprises, Incorporated (HCCE, Inc.), the organizational unit of the Tribe delegated authority to plan, develop and promote commercial and business development on behalf of the Hopi Tribe. The expansion project will involve all areas of work to include feasibility, business and marketing planning, assessment of existing facility, redesign, and engineering and final construction documents. A new wastewater treatment facility will be needed at the Cultural Center. The tourism for a tourist/information center could also be created to provide a place where visitors would have the opportunity to ask questions, learn what is acceptable and feel more comfortable while on the Hopi Reservation. It could also provide space for demonstrations of various crafts, display cases for galleries and places where individual

artisans could display and sell their art. Phase II will involve actual construction and continuation of operations and expansion.

### Full Development of the Hopi Industrial Park

The Tribe conducted an overview of the development of Hopi Industrial Park with Coe and Van Loo (CVL) firm in 2014. The park feasibility study identified expanding economic development for park. The purpose for the study identifies economically viable options as reasonable prior to all of the preferred set of alternatives.

Although some infrastructure is already in place, additional infrastructure, utilities, as well as police, fire and maintenance services need careful planning. The City of Winslow provides both water and sewer services to the site; however, due to current pressure problems on the site, drilling an additional on or off-site well would provide more water. Another solution would be to attach a pumping unit to the existing pipes to increase water pressure and capacity to support further development. An environmental inspection conducted by the Hopi Tribe recommended a number of improvements. Wiring within the building would need upgrading to accommodate new communication technology required by most industries. The water supply to fight fires at the site is not currently available due to an inactive water storage tank and no water connection.

The report concluded: organizing all land use plans into a cohesive plan with time frames; developing an investment requirements and strategies along with the expected returns from investments.<sup>114</sup> This will include the debt, equity and rental income modeling. Current projects are being proposed, however the CVL report gives a step-by-step guidance on what to identify when evaluating proposed projects for the Hopi Industrial Park.

### Dialysis Center

---

<sup>114</sup> *I-40 Corridor Economic Development Feasibility Study Phase 1 Recap Phase 2 Results and Recommendations*, February 3, 2014 Prepared for The Hopi Tribe. CVL Consultants, Wadley-Donovan Growthtech LLC, Garnet Consulting Services, Inc. Economic Development Analysts & Strategies.

The Hopi Tribe's Department of Health and Human Services is pursuing a location to establish a Dialysis Center on the reservation to accommodate the Hopi and Navajo dialysis patients. Several locations have been reviewed. The First Mesa Village has designated a portion of land in conjunction with the Hopi Health Care Facility. These facilities will be in addition to the dialysis facilities at the Health Care facility.

#### Elderly Care Center

The Hopi Tribe continues to look for a site for an Elderly Care Center to accommodate those tribal members who are currently provided services off-reservation. Hopi elders are forced to live off-reservation due to the lack of a facility and support services. A center would provide easier access for relatives to visit patients more frequently and administer care needs that incorporate cultural and traditional methods of healing.

#### Hopi Veteran's Memorial Center

The Hopi Tribe continues its efforts to expand the Hopi Veterans Memorial Center to accommodate the increased interest in indoor and outdoor activities. A Fitness Center includes a Kids Corner to care for children while parents participate in organized activities.

#### Broadband Internet Project

The Hopi Tribe has formed the Hopi Telecommunications Incorporation (HTI) to provide local broadband services to enable user applications that will create jobs and improve the quality of life on the Hopi Reservation. In phase II, Hopi can have pilot terrestrial wireless local area network (WLAN) services quickly developed parallel with the First Mesa pilot satellite services for current Hopi high bandwidth users. This parallel 3-phase approach provides services to more subscribers to demonstrate a sustainable economic basis for expansion of the satellite and terrestrial WLAN broadband services phase II into the phase III Reservation wide communications upgrade. This discussion was part of the Hopi 2001 update of the CEDS process and continues to improve over time with funding grants and construction.

#### Navajo Generation Station Phase 2 Study and EIS

The NGS Phase II has various levels of stakeholders working, they are: the Federal Joint Working Group (USEPA, DOI, and DOE<sup>115</sup>) and the Technical Working Group (TWG)<sup>116</sup> will be conducting Phase 2 of the Navajo Generating Station (NGS), located in Page, Arizona. NGS is a 2,250 MW coal-fired power plant on lands leased from the Navajo Nation near Page, Arizona. Congress authorized construction of the Central Arizona Project (CAP) in 1968, including federal participation in the NGS. Federal share in NGS is 547 MW, with 360 MW used for the CAP pumping of water and 187 MW as surplus power. The Federal NGS surplus power to CAP needs is sold at market rates; revenues assist in CAP repayment and Indian water settlements under Arizona Water Settlement Act (AWSA). The Kayenta Mine, located on lands leased from the Navajo Nation and Hopi Tribe, exclusively supplies coal used by the NGS. Under the National Environmental Policy Act (NEPA) an Environmental Impact Statement (EIS) will be conducted at the Kayenta Mine Complex (KMC). The KMC EIS will address the NGS lease and right of way grants that begin to expire in December 2019; significant permit revision application for Kayenta Mine under review by the Office of Surface Mining Reclamation and Enforcement (OSMRE). The Purpose and Need (P&N) for BOR is to secure, after 2019, a cost-effective reliable to operate the CAP, and generate surplus revenue. The Proposed Action will be to obtain necessary Federal approvals to continue the NGS and Kayenta Mine from 2020 through 2044. The Notice of Intent (NOI) to prepare a single Environmental Impact Statement (EIS) was published in May 2014. The Hopi Tribe, with the approval from Hopi Tribal Council, is currently considering being part of the Technical Working Group under the Parallel Working Agreement<sup>117</sup>. Upon completion of the authorizing approvals, the Hopi Tribe would fall under a Cooperative Agreement (CA). The Hopi Tribe would then become involved with all aspects of the CA for the KMC EIS. This proposed work will include a baseline study may point out the same conclusions identified in the *Analysis of Economic Impacts on the Hopi Tribe and Navajo Nation of a Stringent NOx BART Decision for the Navajo Generating Station, March 1, 2010*<sup>118</sup>,

---

<sup>115</sup> Note: the Federal Joint Working Group consists of the following federal agencies: the United States Environmental Protection Agency, Department of Interior and Department of Energy.

<sup>116</sup> The TWG includes the Central Arizona Water Conservation District, the Environmental Defense Fund, the Gila River Indian Community, the Navajo Nation, Salt River Project (the Operator of Navajo Generating Station), the Department of Interior and Western Resource Advocates.

<sup>117</sup> Note: Parallel Agreement between the Hopi Tribe and the United States Department of Interior regarding the Navajo Generating Station (NGS).

<sup>118</sup> *Analysis of Economic Impacts on the Hopi Tribe and Navajo Nation of a Stringent NOx BART Decision for the Navajo Generating Station, March 1, 2010*. Prepared for the Hopi Tribe. ICF Resources, LLC, Fairfax, VA 22031 Letter Dated March 1, 2010 from Leroy Shingoitewa, Chairman, Hopi Tribal Council, to Jared Blumenfeld, EPA; Document number 0211 in the docent for the ANPRM: EPA-OAR-2009-0598.

the economic hardship the Hopi Tribe potentially could foresee if NGS were to be shut down. The Hopi Tribe, if approved by the Hopi Tribal Council, through the Parallel Agreement would be able to work and receive additional technical assistance for future proposed projects both for the much-needed infrastructure and other proposed economic development projects. BOR's technical consultant will help in the technical assistance will be National Renewable Energy Lab (NREL); will develop a road map for the future of the Navajo Generating Station (NGS). This additional research could help inform the development alternatives for the future of the plan, from electrical systems operations, carbon dioxide (CO<sub>2</sub>) emissions, cost and other environmental impacts perspectives.

### Energy Development

The Hopi Tribal Council along with tribal programs and departments are currently working on solidifying a Hopi Tribe Energy Policy that will include coal, renewable energy, and other mineral development. This document could be a guidance document or become a Tribal Ordinance to help with Energy development as well as a guidance document that helps develop natural resources in an environmental way. As stated, the future of Hopi coal may have a steady decline as the fuel choice in the energy market. Because of this trend, it seems clear that the closure of NGS may be eminent and Hopi will acutely feel the economic impacts of that closure. The next steps will be to work on other energy elements that could over time, diversity Hopi economy, however the location of Hopi along with the limited resources will be a challenge. The diversification for other types of energy development will continue to continue the discussion stage as well as continued education for the Tribal departments and programs with the Hopi Tribal Council and the Water and Energy Task Teams. Current discussions include planning, education, strategic planning within the Tribal government as well as village communities will be ideal through a committee that will utilize all current and updated planning documents. The Hopi Office of Community Planning and Economic Development could help organize and make recommendations for projects and other developments for Hopi.



## **Plan of Action**

The purpose of Hopi Tribal Government, as stated in the Preamble of the Hopi Constitution and By-laws, is to promote the welfare of the Hopi people; to provide a way of working together for peace and agreement between villages; to preserve the good things of Hopi life; and to provide a way of organizing to deal with modern problems with the United States Government and the outside world generally.<sup>119</sup> The CEDS combines all past plans that have set the stage, which then sets the path for future development for the vision for planned project delivery.

The purpose of this action plan is to support, increase and implement the goals and policies for development plans and directing efforts to implement them. The following initiatives are current development priorities that will be given attention in shaping the development of local and outlying economic development.

Hopi Tribal economic development emphasis will be concentrated on pursuing programs that will create a positive sustainable business environment on the Hopi Reservation. On-reservation development and organization is necessary to create effective communication and cooperation among the villages and the tribe to support development efforts for and on the reservation. A key component to economic development will include overall infrastructure energy, water, sewer, internet and other basic needs to create healthy sustainable businesses.

Continued improvements in education and job training are necessary to enhance the understanding of development efforts that will benefit the Tribe, villages and community members. Regional collaborative working efforts with the villages and private sector will increase opportunities for development of projects that will create healthy employment and revenue opportunities for the tribe from Moenkopi to Keams Canyon. Therefore, the regional strategy of the Hopi Tribe is to work closely with the villages and to encourage coordination, cooperation and understanding of the economic development process through community based learning.

---

<sup>119</sup> Constitution and By-Laws of the Hopi Tribe Approved 19, 1936 and as Amended on August 1, 1969, February 14, 1980 and December 7, 1993. United States Department of Interior Office of Indian Affairs.

The community based learning perception will increase education for all Hopi members at all levels of the tribe. The understanding of policies and procedures that help protect the lands, cultural and natural resources will create a reality to build out and have local infrastructure to create and provide a strong Hopi Tribal government and people. The Hopi Tribal departments and programs have the capacity and overall structure to continue work on tribal lands at a local level. The next steps from the large overview will be to create a strategic plan on implementation for each and all projected projects. The list of departments/programs and the proposed projects will create the framework for working towards creating a self-sustaining Hopi Tribe. Each of these projects are parts to an ongoing puzzle that needs to fit one piece into the other either one piece at a time or in some cases at the same time.

The Hopi Tribe will begin to move forward in a methodical and strategic planning approach for the plan of action approach. The key idea to the plan will be to identify each project and ensure the project's plan of action works within a timeline. This timeline will incorporate the task by task or step by step approach for completion of the project with a deliverable. The idea for each approach having a deliverable will enable the on the ground inspection so that the next task will begin and be again completed. This approach incorporates accountability both by the department/program, as well as the project manager who will report back to the client, the Hopi Tribe.

## Challenges

The project team as identified will begin to set out the roles and responsibilities that are both clear and unclear. The idea of roles and responsibilities: are key when there are cost overruns, missed deadlines and disenchanted participants to follow the management protocols set forth at the forefront of the project development. When a role or a responsibility of a program is unclear the tasks identified will not be completed making a breakdown in the timeline and the task as well as funds attached to the project deliverable. The other aspect that should be included is changes or other challenges that will occur and so a plan of managing the changes should be identified. When roles and responsibilities are defined and set forth then the quality of a project will be the result ensuring a happy customer.

The Hopi Tribe's organizational structure identifies the Executive Director to work directly with the tribal programs and departments to ensure project implementation and

accountability, then report back to the Hopi Tribal Council. This position is key to both policy implementation and accountability. Throughout the various interviews and discussions it was apparent that the role of the Executive Director is key to helping the Tribal Council approve policy, yet at the same time the tribal departments and programs need to have that link to Tribal Council for true understanding of projects and proposed policy or tribal ordinances.

### Self-Governance

The approach has been utilized by various projects similar to the planning of large construction projects where time is money and money is the product of the client. This idea for implementing a planned approach will enable the Hopi Tribe and its members to be accountable to them and to the Tribe as a whole. The foundation for successful projects, small or large are due to communication and continued education to fully understand the project from pre-start through the end when the books are closed and project is constructed or implemented. The Hopi Tribe, as a “sovereign nation” has the full capacity to take on large multimillion projects, with the key stakeholders on board, the Hopi Tribe could secure funds and have its own Hopi people begin to be independent creating both a sense of sustainable community and nation building; which is defined through development, focused path, plan, endorsement, capacity to manage change and to close a project. Of which, much is in place currently with the various tribal departments and the ordinances they oversee and maintain to protect the assets and natural resources for the Hopi Tribe.

A proposed list identifying key projects to set the stage for creating the foundation for the Hopi Tribe economic development are identified below as an example, the HAMP project: The Preliminary Engineering Report for Hopi Arsenic Mitigation Alternatives: IHS Projects PH12-E73, PH11-E55, PH10-E37, PH8-T38, PH06-D33 and PH04-S63 reports have been prepared for the Hopi Tribe by Indian Health Service, Division of Sanitation Facilities Construction, from the Eastern Arizona District Office, Lakeside, AZ, August 2014. Over the years the Hopi Arsenic Mitigation Project (HAMP) has been in the process for planning and development with participation of various federal agencies, tribal programs, tribal leaders, and village representatives. Various reports have been produced that lay out the step by step approach from conceptual design, mapping, operation, maintenance, repairs, cost breakdown for the entire proposed system.

Challenges for this project include: energy source to power the HAMP system down through the distribution line to inner connect with the existing village infrastructure. Existing water and sewer infrastructure will be challenges as well to secure the various sources of federal funding to put forth a solid project.

The Tawa'ovi Community Development Project under Housing and Urban Development Challenge Grant #CCPAZ0043-11 produced a final report dated December 18, 2013 for the Hopi Tribe. This project is proposing a sustainable community northeast of the main reservation. This project will be a new community within a regional setting within Hopi Partitioned Lands (HPL). The Tawa'ovi Community will have the capacity for many different ways to build a community.

These two projects listed above have had various reports and conducted studies that set the stage for continued efforts to identify funds to continue to work on the project. Many projects start with a report or a study, from there it continues to move forward by the department/program responsible for overseeing it.

## Conclusion

The current state for Hopi lies on the history of the Hopi. The Hopi's historic relationship to the land and the historic relationship, through droughts and floods has evolved over the times brings Hopi to present day. Continued drought and other climatic challenges have sustained Hopi over the course of centuries old traditions of dry farming techniques and the historic forms of water use. Over time, the Hopi have maintained the traditional stewardship with the land, water and other natural elements. However, time has been changing bringing with it more challenges through Hopi history, culture, religion, the world view, geography, laws, policies, decisions (both at Hopi and beyond Hopi's authority through national and state legal decisions), and historical/current dealings with their neighbors the Navajo Nation.

This change and challenge lies within the population change where the statistics from the Hopi Enrollment offices shows that the enrollment numbers show almost a leverage for 7,815 members living on Hopi and 6,312 living off the reservation. This is significant to point out and to remember, for Hopi culture, traditions and livelihood may be at risk due to many Hopi's living, working and raising their families off the main Hopi reservation. These families may come back to the reservation for ceremonies or other needs; however if the trend continues

where the unemployment percentage continues to increase, with continuing slow processes for housing, or other major capital improvements for safe drinking water, sewer and energy infrastructure what will Hopi's come home to. The future steps for the future of Hopi will be faced with challenges, risks as well as opportunities.

The current state of the Hopi Tribe can incorporate short term and long-term goals set forth by meeting set objectives/mission for creating an economy through various infrastructure projects to set the foundation for economic development projects both small to large. The mission of the Hopi Tribe is to work with each tribal department/program to create short term and long-term goals and objectives under a strategic plan. Water is vital to sustaining Hopi life and culture. Securing and developing water infrastructure is foremost for a sustainable homeland. An example of a long term project, across a number of Hopi Villages, a need for water and sewer projects are struggling to obtain funding to upgrade and ensure that EPA safe drinking water standards are met for village members. Village governments are working towards a plan to achieve growth and development and guaranteed water and sewer infrastructure is a vital precursor to any future investment in various economic ventures under consideration.

The Hopi Tribe must have a will to utilize both its assets, the natural resources including land use planning as well as the proposed energy policy to begin steps moving forward to create a permanent homeland. The future coal sales, that Peabody Energy supplies Navajo Generating Station (NGS), will stay for now, however the steady decline will continue due to federal/state climate change policy. Due to the Hopi Tribe being geographically isolated from employment opportunities in northeastern Arizona, possible industrial development could be a potential project within the boundaries. The Hopi have also rejected gaming as a potential source of revenue.<sup>120</sup> The Hopi Tribe stressed in its comments to EPA back in March 2010, "that if NGS closed, the economic impacts would be catastrophic and include curtailment of critical social programs, lost employment, and loss or slowing of critical infrastructure programs."<sup>121</sup>

The future of Hopi as a "sovereign nation" will be dependent upon time and a plan on how the Tribe's will to diversify its current economic portfolio. The planning process will be

---

<sup>120</sup> *Analysis of Economic Impacts on the Hopi Tribe and Navajo Nation of a Stringent NOx BART Decision for the Navajo Generating Station, March 1, 2010.* Prepared for the Hopi Tribe. ICF Resources, LLC, Fairfax, VA 22031 *Letter Dated March 1, 2010 from Leroy Shingoitewa, Chairman, Hopi Tribal Council, to Jared Blumenfeld, EPA; Document number 0211 in the docent for the ANPRM: EPA-OAR-2009-0598.*

<sup>121</sup> *Analysis of Economic Impacts on the Hopi Tribe and Navajo Nation of a Stringent NOx BART Decision for the Navajo Generating Station, March 1, 2010.* Prepared for the Hopi Tribe. ICF Resources, LLC, Fairfax, VA 22031 *Letter Dated March 1, 2010 from Leroy Shingoitewa, Chairman, Hopi Tribal Council, to Jared Blumenfeld, EPA; Document number 0211 in the docent for the ANPRM: EPA-OAR-2009-0598.*

time consuming, but will help identify a future process for one or more potential economically feasible energy projects. The projects could continue to utilize existing natural resources for coal reserves untapped as well as renewable energy from wind to solar projects.

The Hopi Tribe will continue to face the challenges due to limited access to capital and due to being located in remote or isolated from distribution centers, dealing with transportation, communication systems, and major capital infrastructure such as water and sewer. Due to limited funding both from the federal government and or other resources like loans, making the potential of project financing long and stringent. The Hopi Tribe's focus will be to continue to strive on accessing capital to start and maintain businesses of all sizes. Economic development will continue to be a challenge for access to capital for tribal government services creating the much needed start for any business either as small business owner to the tribal government itself. This is highly significant as a challenge.

Many tribal members and others may question what the next steps will be for the Hopi Tribe and its tribal government, its tribal lands and its people as far as the future and economic growth. The Hopi Tribal Council can utilize this document to help prioritize goals, policies and objectives through strategic planning and setting a timeline to get the objective checked off the list as completed as they go through and list the challenges, the associated risks as well as seeking opportunities to develop a sustainable economy on Hopi for Hopi.

Appendix A<sup>122</sup>

---

<sup>122</sup> Note: The Appendix A was taken from the 2010 Hopi Comprehensive Economic Development Strategy Prepared by The Office of Planning and Evaluation under an award from the U.S. Department of Economic Development Administration Project #07-84-06439. Note: the Hopi Comprehensive Wetland Rehabilitation Plan Draft is a key factor in Appendix A as well, due to the overview for the geographic overview for Hopi lands and other natural resources.

## PHYSICAL FEATURES

The main Hopi Reservation is located in eastern Coconino and northern Navajo Counties, Arizona. It encompasses 2,439 square miles or 1,561,054 acres, and is bounded on all sides by the Navajo Indian Reservation. Most of the reservation is open land used for traditional farming and livestock grazing. Hopi shrines, sacred features and ceremonial gathering areas are scattered throughout the main reservation.

The Hopi own a 220-acre parcel of land on the border of Winslow, Arizona, known as the Hopi Industrial Park. It is held in trust by the United States. In 1968 a 120,000 square foot building was constructed on a 15 acre parcel for apparel manufacturing (the building is now vacant and in need of repair), 25 acres has been dedicated to the Hopi Housing Authority for HUD sponsored low-income rental units. 160 acres currently remains undeveloped.

In 1997 the Hopi Tribe acquired additional aboriginal lands totaling 429,264 acres of pine, oak, juniper and piñon forest, working ranches and rangeland as partial settlement in the Navajo-Hopi Land Dispute settlement Act of 1996. These lands were and still are working cattle ranches. Currently, the ranches raise for profit Hereford registered and commercial cattle. These new lands are located in Navajo, Coconino and Apache counties. The Hopi Tribe, in coordination with Arizona State Game and Wildlife, host its first big game hunt during hunting season for 2015. The Hopi Tribe is completing the process to take these lands into trust status. Future development has not yet been determined by the Hopi Tribe although the potential exists for summer and winter recreation activities, Trophy big game hunts, bed and breakfast operations, executive retreats, life skills building for adults/youth, Interstate frontage billboards and a truck stop.

The main Hopi Reservation is located within the Great Basin Desert, on the Colorado Plateau, encompassing and extending beyond the southern edge of Black Mesa.<sup>123</sup> Black Mesa consists of sandstone belonging to the Mesa Verde Group, underlain by Mancos Shale.<sup>124</sup> The southern escarpment breaks off sharply to form the broad, flat Little Colorado River Valley.<sup>125</sup> The southern scarp of Black Mesa forms discontinuous, finger-like

---

<sup>123</sup> Hopi Comprehensive Wetlands Rehabilitation Plan, Chapter 1. Pg. 5/11

<sup>124</sup> Hopi Comprehensive Wetlands Rehabilitation Plan, Chapter 1. Pg. 5/11

<sup>125</sup> Hopi Comprehensive Wetlands Rehabilitation Plan, Chapter 1. Pg. 5/11



projections called Antelope Mesa, First Mesa, Second Mesa, Third Mesa, Howell Mesa and Coalmine Mesa.<sup>126</sup>

Five major washes cross the Hopi Reservation: Moenkopi, Dinnebito, Oraibi, Polacca, and Jeddito. All are tributaries of the Little Colorado River, and flow in a generally northeast to southwesterly direction. While the majority of the washes are ephemeral, intermittent and perennial reaches exist in some areas, primarily as a result of groundwater discharge.

The climate of the Hopi Reservation is semiarid, with precipitation ranging from 6 to 10 inches per year in the lower elevations, and 10 to 14 inches per year in the higher elevations. The majority of the precipitation occurs July through October. May and June are the driest months. Scattered thunderstorms are common in the summer. Snow accumulates most heavily in January and decreases steadily into May. The average seasonal snowfall is 14 inches. The climate is characterized by mild to hot summers, and cold winters. In summer the average temperature is 70°F, and the average daily maximum temperature is 87°F, as recorded at Keams Canyon. The growing season ranges from 120 days at the higher elevations to 160 days in the lowlands. Elevations within the Hopi Reservation range between 4,500-7,500 feet above mean sea level.

### Reservation Vegetation Zones

The Hopi Reservation covers diverse environmental zones. These various environmental zones support plant communities that Hopi have continued to harvest and manage for a number of needs and applications, since prehistoric times. As part of Hopi stewardship, plant resources are key to sustaining the many domestic and religious needs of Hopi society. Prior to widespread grazing native vegetation supported wildlife such as small and big game, resident and migratory birds, insects, reptiles, amphibians, and many others that made up the source of annual gathering harvests for Hopi needs.

### Tutskwa: Desert Scrub / Grasslands

The various grasslands habitats/plant communities on the Hopi Reservation comprise approximately 1.5 million acres, or 96% of the existing trust lands. The Semi-Desert

---

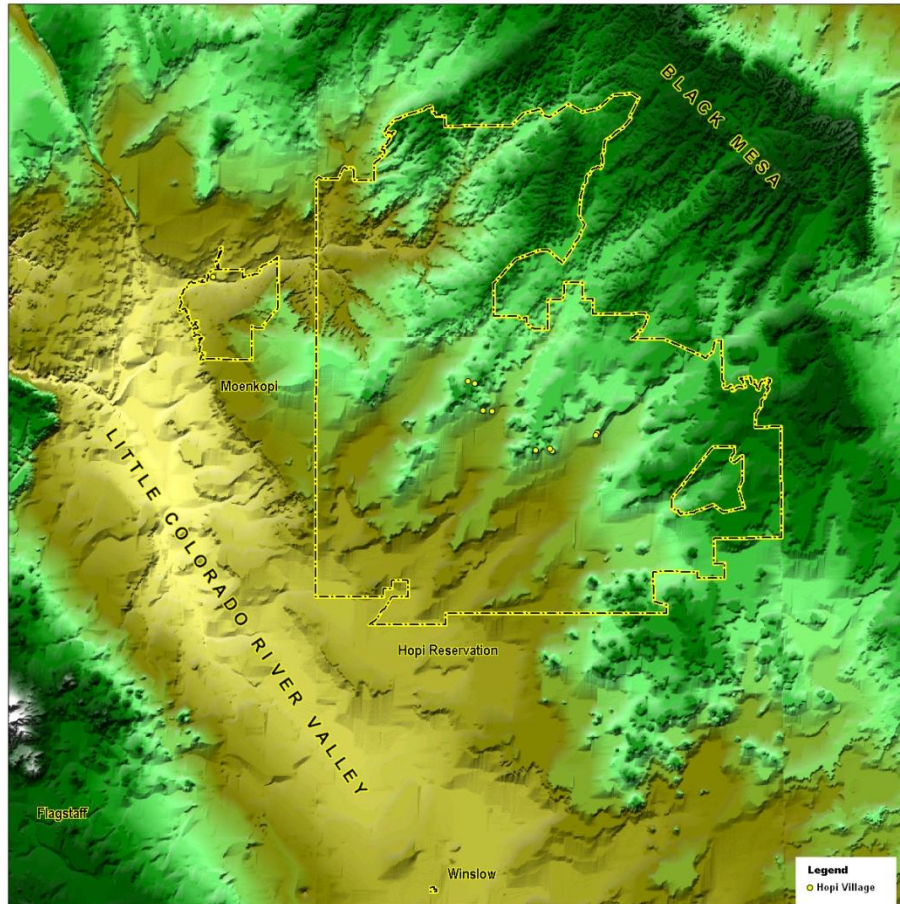
<sup>126</sup> Hopi Comprehensive Wetlands Rehabilitation Plan, Chapter 1. Pg. 5/11

Grassland occurs below 5500 feet in elevation<sup>127</sup> and receives average annual precipitation of five to eight inches. It occupies 264,353 acres, or 17% of the Reservation. Vegetation in this zone is predominantly grasses, of which galleta (*Hilaria jamesii*), Indian ricegrass (*Oryzopsis hymenoides*), and alkali sacaton (*Sporobolus airoides*) are dominant. Characteristic forbs are rosemary mint (*Poliomintha incana*), winterfat (*Eurotia lanata*), and several low saltbushes (*Atriplex* spp.). This is a nearly treeless area, with the exception of riparian areas, or where soil moisture is concentrated.

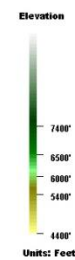
Mixed Grassland occurs between 5500 and 6200 feet in elevation, and receives average annual precipitation of eight to twelve inches. It occupies 993,907 acres, or 64% of the Reservation. This zone is dominated by grasses when in good range condition. The presence of big sagebrush (*Artemisia tridentata*) indicates transition into Sagebrush-Grassland zone. Important forbs are buckwheats (*Eriogonum* spp.), low sagebrush (*Artemisia bigelovii*), and four-winged saltbush (*Atriplex canescens*). Scattered juniper trees are also found in shallow soils.

---

<sup>127</sup> Elevations are approximate. Areas on south and west exposures are often mapped as drier climatic zones at elevations above the upper range given. On north and east slopes, the reverse often occurs. (BIA, Hopi Range Inventory Report, 1996, p. 3)



## REGIONAL TOPOGRAPHY



### Hopit Tunatya'at 2000: The Hopi Strategic Land Use and Development Plan

Prepared by The Office of Community Planning & Economic Development  
April 2001

Sagebrush-Grassland occurs between 6200 and 7000 feet and receives average annual precipitation of twelve to fifteen inches. It occupies 285,738 acres, or 18% of the Reservation.<sup>128</sup> Big sagebrush is the dominant shrub. Blue grama, galleta, and Indian ricegrass are the dominant grasses, but bottlebrush squirreltail (*Sitanion hystrix*), western wheatgrass (*Agropyron smithii*), and needle-and-thread (*Stipa comata*) are much more prevalent than in lower zones.<sup>129</sup> Some areas of steep, shallow soils have canopies of pinyon (*Pinus edulis*) and juniper (*Juniperus monosperma* and *J. osteosperma*) with understories of muttongrass (*Poa fendleriana*), prairie Junegrass (*Koeleria pyramidata*), desert needlegrass (*Stipa speciosa*), and elk sedge (*Carex geyeri*).<sup>130</sup>

#### Pasíqölö: Wetlands - Riparian Plants and Deciduous trees

The Hopi regard the protection of Pasíqölö as an important step towards fulfilling stewardship responsibilities due to cultural and religious links to water. Hopi ideology focuses on the propitiation and value of moisture in all its forms, including those that sustain wetland environments. Wetlands are not elevation specific ecological zones; neither do they receive more or less precipitation than surrounding environments. However, they are characterized by the presence of water, for some or all of the year, hydric soils, and wetland vegetation<sup>131</sup>.

Riparian plants, paatusaqa, in these wetland environments are important because of their link, physically and spiritually, with the life-giving moisture that sustains them. Wetlands are found in different areas throughout the reservation such as in the major washes, seeps, springs, and drainages. A few examples of wetlands found throughout the reservation are Kalbito Springs, Wipho Wash, Keams Canyon, and Pasture Canyon. Each area is unique and historically supported many forms of native plant life. This zone occupies an estimated 8,000 acres, or less than 1% of the Reservation. Dominant vegetation species include cottonwood (*Populus* spp.), willow (*Salix* spp.), tamarisk (*Tamarisk* spp.) and Russian olive woody species, cattails (*Typha angustifolia*), rushes (*Phragmites australis*), reeds (*Equisetum hyemale*), and wetland grasses (*Spartina gracilis*, *Polypogon monspeliensis*, and others).

---

<sup>128</sup> Hopi Comprehensive Wetlands Rehabilitation Plan, Chapter 1. Pg. 5/11

<sup>129</sup> *Ibid.* pg 5

<sup>130</sup> Hopi Comprehensive Wetlands Rehabilitation Plan, Chapter 1. Pg. 5/11

<sup>131</sup> US Army Corps of Engineers Definition.

Habitat loss for most of these important native plant species is imminent. Most wetlands need rehabilitation due to their being overrun with noxious woody weedy species, i.e. tamarisk and Russian olive trees, which push out native plants and use water in an unsustainable manner.

#### Hóoqölö – Tuve’qölö: Piñon-Juniper and Great Basin Conifer Woodlands

Most woodland on the Hopi Reservation consists of Piñon-Juniper tree stands. These woodlands provide an optimum resource for many activities and have been utilized by Hopi for a multitude of purposes. Woodlands are commonly a mixture of piñon and juniper, with junipers dominant in the lower part of the Zone, and piñon increasing to become dominant in the Piñon Juniper Woodland Zone. Piñon Juniper Woodland occurs between 6500 and 7500 feet elevation, and receives average annual precipitation of fifteen to seventeen inches. Piñon-juniper canopy is the dominant feature. This zone occupies only 9,543 acres or less than 1% of the Reservation. Big sagebrush is dominant in deep soiled areas, along with bottlebrush squirreltail, blue grama, galleta and Indian ricegrass. Muttongrass, prairie Junegrass, and bottlebrush squirreltail are most prevalent under tree or shrub canopies. Gambel oak (*Quercus gambelii*) is a primary indicator of this Zone, along with Utah serviceberry (*Amelanchier utahensis*).

Yet the current condition of this resource is poor due to over-use for fuel harvesting, unmanaged roads, erosion, and human pollution. A recent study indicated that the Hopi Tribe might only have 10 years of woodland resources remaining, at current rates of consumption<sup>132</sup>. The major areas of woodland resources are in Range Units 262, 263, and the mesa tops above Keams Canyon.

#### Paavahu: Water Resources

Historically, Hopi people relied on a dense network of springs for their water. However, growing population and modern development have increased the demand for water beyond the capacity of these springs and compelled Hopi to look for alternative sources. The Hopi now rely primarily on subsurface aquifers for both human and livestock uses.

Many growing communities in northeast Arizona use these same aquifers and the surface drainage of the Little Colorado River and its tributaries. Since the area’s constrained water

---

<sup>132</sup> Bruce Koyiyumtewa report, 1999 from the Hopi Comprehensive Wetland Rehabilitation Plan.

supply has to support a growing population, there is negotiation and litigation surrounding water use rights. Additionally, human impacts are compromising the quality of the region's water, both above and below ground. Since aquifers depend on infiltration of surface water for recharge, they are vulnerable to overuse, drought, contamination and harmful human activities. Source water for the Hopi Reservation is in dire straits for a variety of reasons.

### Surface Water Resources

The surface water resources of the Hopi Reservation include the five major washes, Jeddito, *Polacca*, Oraibi, Dinnebito, and *Moenkopi*, which traverse the Hopi Reservation from a northeast to southwest direction. The washes are dry most of the year and only flow during high runoff events. Winter storms are of long duration and low intensity and produce little runoff. This is in contrast to the intense summer thunderstorms. Over 80 percent of the annual stream flow occurs from July through October. When stream flow does occur, it contains large amounts of silt. Short reaches of Moenkopi, Dinnebito, Oraibi, Polacca and Jeddito Washes contain flowing streams or pools of water year-round. These flows are sustained by groundwater discharge, due to unconfined aquifer conditions. Over the long-term, total stream flow on the reservation averages about 25,000 acre-feet per year, but shows extreme variability from year to year.<sup>133</sup>

All of the Hopi washes are listed as impaired under the Hopi Tribe's Clean Water Action Plan Unified Watershed Assessment, due to sediment load, chemical contamination, and presence of coliform bacteria. The only known current utilization of surface water on the Hopi Reservation is for cattle watering through diversions to off-stream storage and cattle ponds on tributaries to the washes. Under the settlement proposal in the Little Colorado River Adjudication, the Hopi and Navajo Tribe would share in the waters of these washes equally, according to a formula regulating impoundment storage volumes.

### Ground Water Resources

The limited and highly variable supply of surface water, groundwater is an important resource. Groundwater resources will have to provide for much of the Hopi people's future needs. Groundwater originates as rainfall and surface water that seeps into the ground and is

---

<sup>133</sup> Sonosky, Chambers and Sachse, 1986

stored in porous rock and soil layers called aquifers. Aquifers under the Hopi Reservation are stacked one on the other and are generally separated by nonporous barriers of clay shale or other rock.

#### Perched Aquifers

Perched aquifers are sand deposits that lie within a confining soil and rock layer. Livestock, game, and human occupation easily contaminate these aquifers. The Tuba City Landfill contaminates one of the perched zones and another is contaminated by the Thriftway/Sunwest gasoline station spills at Tuba City and Munqapi. These aquifers may yield water to seeps, springs and windmills. They are limited in extent and poor in quality. In general, this water is of acceptable quality for stock watering but unsuitable for domestic use or irrigation.

#### Quaternary Alluvial Deposits

Sand and soil are deposited along the washes by fluvial action and wind. These deposits may contain water of variable quality and production. D.B. Stephens and Associates dug four wells into the alluvium in 1993 as part of the ongoing water source inventory conducted by the Hopi Water Resources Program. A well dug into the alluvium along upper Wepo Wash was very good in quality and production. A well dug into the alluvium near Polacca Airport was moderate in quality. Two wells dug into the alluvium along Oraibi Wash were moderate to poor in quality. Two boreholes attempted in the alluvium along upper and lower Dinnebito Wash were dry. A windmill near Polacca is dug into the alluvium and used for water hauling for drinking and livestock water. The quality is unknown.

#### Wepo Sandstone Aquifer

This uppermost aquifer is a rock unit high on the Hopi mesas near the Peabody Coal Company Black Mesa Mine lease. A few windmills are drilled into this aquifer, mostly on the Navajo Partitioned Lands. It is limited in extent and storage, and little is known about the quality of the water.

Toreva Sandstone Aquifer (T-Aquifer)

This aquifer outcrops along the edges of the Hopi Mesas, and supplies the springs traditionally used for drinking water supply and garden irrigation near the villages. Water supply wells have been drilled into this aquifer at First Mesa and a hand-dug well was drilled into it at Kykotsmovi early in the 20<sup>th</sup> Century. Water quality ranges from very good (potable) to poor (due to metals and bacterial contamination). Production is fair. At Hotevilla and Bacavi, the water contains radioactive gas (radon) in excess of the proposed maximum contaminant level (MCL). The exact extent of the aquifer is unknown due to poor well logs at Hopi. This aquifer is easily contaminated by human occupation, due to its nearness to the ground surface in inhabited areas.

Dakota Sandstone Aquifer (D-Aquifer)

This aquifer consists of the Dakota Sandstone and Entrada Sandstone water-bearing units. It is extensively used for windmills in cattle watering. Some people may haul water from these windmills. The aquifer water quality ranges from very good to poor. Springs in the Keams Canyon area discharging from this aquifer may contain arsenic and other metals. Saline water from this aquifer may contaminate drinking water wells in the Polacca and Hopi High School areas due to poor well construction and/or natural inter-formational leakage and seepage. The Spider Mound well is thought to penetrate this aquifer and contains fluoride in excess of the MCL. The exact extent of this aquifer is unknown due to poor well logs at Hopi. Production ranges from poor to fair. The Entrada Sandstone is unsaturated in the south Oraibi basin.

Navajo Sandstone Aquifer (N-Aquifer)

This aquifer consists of the Navajo Sandstone, the Kayenta Mudstone and the Windgate Sandstone. It is the primary drinking water aquifer on the Hopi Reservation, being the source for all village wells, except Spider Mound. In many areas, the water is sufficiently pure to use in steam irons (nearly distilled water quality). The production rate is generally good, ranging from 20-600 gallons per minute. Contamination is possible from inter-formational leakage through faults and fractures in the overlying rock. The exact extent of this aquifer is unknown due to poor well logs at Hopi.

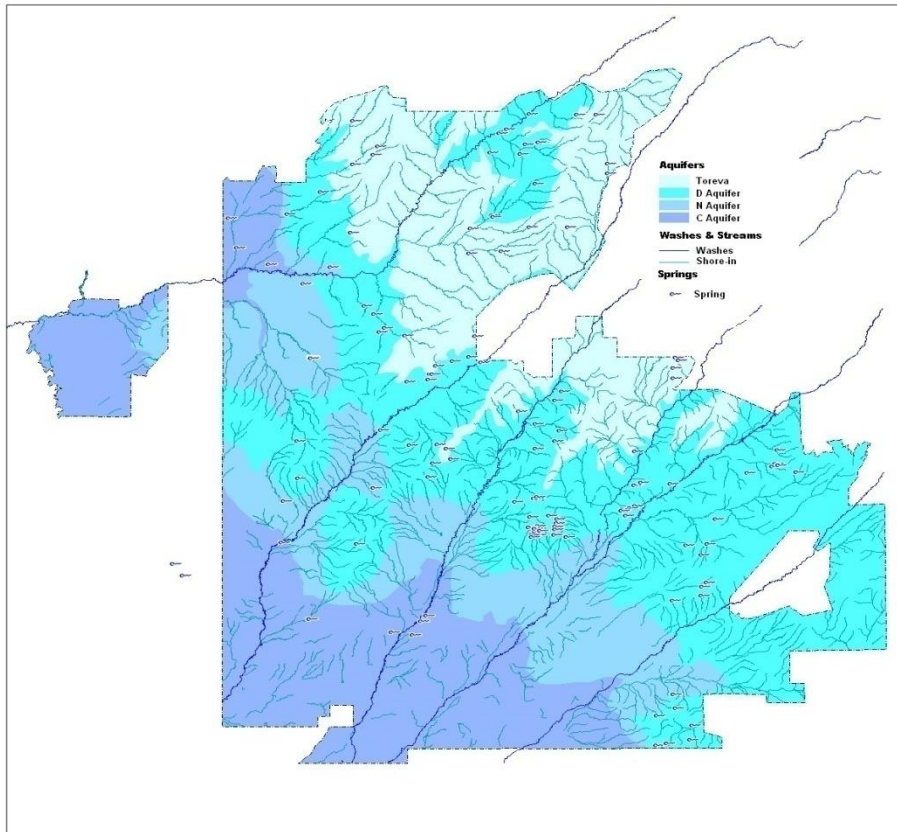
Coconino Sandstone Aquifer (C-Aquifer)



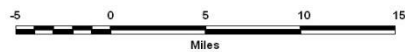
This aquifer consists of the Coconino Sandstone and Supai formations. It is known to underlie the Hopi Reservation. It extends throughout the Little Colorado River Basin and is used for drinking water supply in the nearby cities of Flagstaff, Winslow, Holbrook, St. Johns, and others. The quality ranges from very good (at Peabody) to very poor. The production rate is very good at Winslow and very poor at the Peabody Mine. An oil exploration well in the southern part of the Hopi Reservation (Oraibi Wash Basin) was once used for water supply. This aquifer is under intense investigation by Hopi Water Resources Program Staff and D.B. Stephens and Associates for water supply in the southern portion of the Hopi Reservation and at Munqapi. The C-aquifer well has been explored down 3,200 ft. below surface. The water quality Another study is soon to be published for the southern part of the aquifer by the US Geological Survey.

Muav Limestone and Redwall Limestone Aquifer

This aquifer is used for water supply in the City of Sedona and at the Hualapai and Havasupai Indian Reservations, but is nearly 4,000 feet deep at Hopi. It is not considered a viable or affordable source of water for Hopi.



## HYDROLOGY



### Hopit Tunatya'at 2000: The Hopi Strategic Land Use and Development Plan

Prepared by The Office of Community Planning & Economic Development  
April 2001

Tutskwa niqw toko’at: Land and Mineral Resources

Hopi cultural values and traditions have always focused on the need to respect and care for the land granted to us by Maasaw with the condition that it not be negatively impacted. Prehistoric uses of the land usually came from stone, clays, sands, coal, other minerals and materials used for construction, cultural uses, and fuel. Gathering sites are governed by traditional arrangements; some sites are public, while others ‘belong’ to individuals who developed them

The passage of the Hopi Tribal Council Resolution H-83-79 on July 9, 1979 requires further study of Hopi energy resources before any development can take place, and places a moratorium on all additional energy resource exploration and development on all tribal lands. This moratorium is to remain in place until “a formal energy resource development policy has been adopted by the Tribal Council.” The Policy would serve as a tool to properly assess, develop and manage energy resources while protecting the cultural, religious and hydrologic resources of the Tribe, so that a balance between Hopi traditional values and economic viability can be achieved.

The 1991 *Mineral and Energy Resources on Hopi Lands* report by the Hopi Office of Mining and Mineral Resources summarizes available data on Hopi mineral and energy resources, discussing some economic, environmental, and political concerns relative to those resources and identifies policy issues pertinent to each resource as follows from the *Executive Summary*.

Owako – Coal:

The full extent of coal resources on Black Mesa is unknown. Coal production is a major economic resource of the Hopi Tribe. A long-range marketability study should be commissioned to determine the feasibility/unfeasibility for future development.

Oil and Gas

Incomplete information is available on the six oil wells drilled on District Six during the 1960’s. Because of the cultural significance District Six holds for the Hopi people, it would not be practical to explore or mine in that part of Hopi land.

Coal-Bed Methane

Coal-bed methane contained in the Toreva and Dakota formations may provide a valuable energy resource for the Hopi Tribe. Coal-bed methane production requires the dewatering of the coal-bearing formations; poor quality water produced by the Toreva or Dakota aquifers as a by-product of pumping methane may be reinjected back into the aquifer, or may provide a feasible alternative to N-aquifer water now used by Peabody. Coal-bed methane should be assessed to determine the feasibility of extracting it from the coal prior to mining the coal resource itself. There is potential for deriving more economic value for the product by using or marketing both types of resource. The Hopi Tribe should look seriously at the opportunities to develop coal-bed methane for use as a fuel by the Hopi people.

#### Uranium

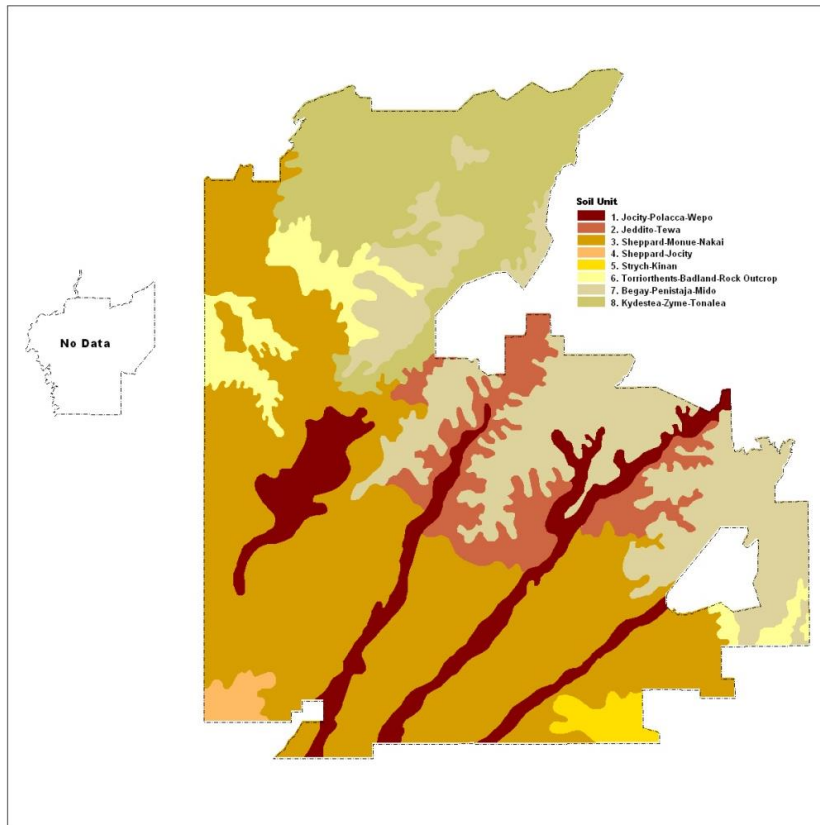
Economic uranium deposits probably underlie Hopi land. However, the Hopi Tribe would view uranium development with extreme skepticism in view of the well-known health problems and environmental damage resulting from uranium mining.

#### Carbon Dioxide and Helium

Both carbon dioxide and helium may underlie Hopi land. If either of these two gases is discovered in economic quantities, a significant capital investment will be required to build pumping stations, compressor plants, and pipeline facilities to transport the gases.

#### Tuuwa, Owa, Tusyavu, Tsöqa - Industrial Minerals

Deposits of sand, gravel, clay, building stone, and scoria are sufficient to supply Hopi demands for many generations to come. Proximity to roads and future planned developments is the most important consideration in using these resources. Needs for construction materials should be assessed to insure the efficient development of the Hopi infrastructure.



## GENERAL SOILS



### Hopit Tunatya'at 2000: The Hopi Strategic Land Use and Development Plan

Prepared by The Office of Community Planning & Economic Development  
April 2001

## **Major Economic Sectors**

Traditional dry farming and trading was once the mainstay of the Hopi economy. The economic transition from traditional subsistence lifestyle to participation in the American western economy by way of western formal education and job creation. This change has created numerous areas of conflict for the Hopi government, Hopi Villages and the Hopi people.

The Hopi economy consists of a modern and traditional, subsistence sector. The modern sector includes conventional jobs performed for wages. Most of these jobs are service sector jobs at large, institutional places of work. Self-employment and small business activity are a vital element of the total economic profile on the Hopi Reservation, but this part of the economic base is vulnerable and still very small as compared to other off-reservation rural communities of the same size population. The reservation economy remains underdeveloped and un-diversified. Communities (non-Hopi communities) that border the reservation benefit from a tremendous drain of revenue as the Hopi people are forced to shop for goods and services that are not available on the Reservation

The traditional sector includes the use of crafts, materials, corn and other products to exchange for other articles or commodities and to give away in social and religious activity. Individuals on the Hopi Reservation devote substantial effort to production within the informal sector of the economy. The primary elements of the traditional economy are crafts production, farming and ranching.

Tribal members most often use a variety of economic strategies to survive. Many combine full-time or part-time work with livestock grazing, making and selling of traditional arts and crafts, selling surplus crops, and gathering various materials for their own use or for sale. Much of this mixed cash/subsistence/traditional economy is based on land and resource use. The two sectors of the economy are linked. Cash that originates as wages may be used to purchase goods that originate in the subsistence sector. The subsistence sector provides economic alternatives for people who are unemployed, under-employed or work seasonally.

### Agriculture

Many Hopi residents are involved in farming and ranching but commercial economic activity is limited in the agriculture sector. Farming centered on raising corn remains a largely traditional activity. Only a fraction of the individuals grazing cattle pursue ranching as a profit-

driven business. The purchase of Cibolla Farms in La Paz county provides an opportunity to produce both alfalfa and cotton in commercial quantities.

The total number of farming and ranching jobs on the Hopi Reservation is estimated to be about 70, consisting of five farms and 60 ranchers. All these individuals are considered to be self-employed. Proprietors' income associated with these economically motivated agricultural operators is estimated to total about \$60,000. Considerable effort is devoted to farming and ranching for traditional, social and vocational purposes.

Farming:

The majority of Hopi families farm, but only a tiny fraction of all farmers on the Hopi Reservation raise crops to earn income. Examples of income-producing crops are fruits raised for sale mainly to locals and shelled corn. Some Hopi farmers sell or trade corn with each other and with outsiders, especially for the Hopi blue corn. Some people travel to Hopi specifically to buy shelled Hopi corn.<sup>134</sup>

Approximately 9,000 acres of the Reservation are cultivated. Farmland is typically restricted to small, 1 to 5 acre plots located on alluvial fans and floodplains. Crop production was traditionally the mainstay of the Hopi people and is still an important cultural activity on the reservation. Most Hopi farmers do not use fertilizers or pesticides.

The quantity and imputed dollar value of the traditional corn harvest on the Hopi reservation is substantial, but has not been estimated. However, an estimate of the considerable quantity of food prepared to give away on traditional occasions gives an indication of the level of effort devoted to raising food for traditional consumption and give-aways. Food costs to an individual household for a given occasion vary in value from a minimum of \$100 for ceremonies to as much as \$2,000 to feed guests at a wedding pay-back. Households also give away food at most dances, with the estimated value varying from a few hundred dollars for a night dance to as much as \$4,000 for a plaza dance. These estimates do not include potential or estimates of labor cost to prepare for these activities.

---

<sup>134</sup> Kathleen Manolescu, Hopi Corn Production. A Report on Research conducted for the Bureau of Indian Affairs, Phoenix Office

Livestock Production:

Although livestock production is not a traditional Hopi activity<sup>135</sup>, it has become an integral part of modern Hopi life. The introduction of livestock into Hopi land stems from the Spanish colonization of the Southwest beginning in the mid-1600s. Hopi herdsman have raised a variety of livestock over the course of the last 400 years, including sheep, goats, horses, cattle, and swine. It is also the most extensive land use activity on the Hopi Reservation.

The Hopi Reservation is divided into 36 range units and 15 District 6 units that are intended to provide for better distribution of livestock than was possible prior to the 1960's. Until the 1960's, sheep were the predominant livestock. In the late 1960's, after catastrophic blizzards decimated the sheep herds, sheep were replaced with cattle as the predominant livestock.

The impact of livestock production on arable lands on the Hopi reservation has been significant. Approximately 1.4 million acres of Hopi reservation land has been put into use as grazing lands for the production of beef, mainly through cow-calf operations.

The majority of Hopi ranchers do not generate sufficient income from their animals to support themselves. Most individuals are employed full-time in other income generating activities. Most Hopi ranchers raise livestock in a traditional way for occasional cash, personal consumption or social exchanges and obligations. For example a Hopi individual may start and raise a small herd of cattle over a two- or three-year period for the express purpose of sponsoring a ceremony or feeding a wedding party.

There are approximately 346 permittees on the Hopi Range, including 50 Navajo. The Hopi range supports a cattle herd recently numbered at 4,800 head, plus sheep and horses. Although most cattle raised on Hopi are sold for cash, estimates vary from 10 or 15 to more than 70, as to how many operators treat ranching as a vocation. At an assumed average individual herd size of 20, annual income per operation is estimated at a little less than \$4,000, for a total income from ranching of about \$280,000. The estimated income value of all cattle either consumed, given away or sold for occasional cash is about \$640,000 over and above the approximately \$280,000 in annual income earned by economically motivated ranchers. Even for vocational ranchers on Hopi, ranching is just one of two or more sources of income.

---

<sup>135</sup> There is a widely expressed view that Hopi people were not supposed to go into the ranching business because cattle will destroy the land and contaminate the springs



Ranchers do not bear the true cost of ranching. The tribal government provides and maintains fencing, watering facilities (windmills, drinkers and stock tanks), and rehabilitates range units, at a cost of approximately \$800,000/year. The revenue from grazing permits does not cover these expenses. Ranchers have little to no investment in the infrastructure and hence have little desire to maintain or upgrade facilities. Additionally, Hopi ranchers do not bear any expense for land maintenance, as they would if ranching off-Reservation. Animal owners do bear the cost of veterinary services.

One of the main factors limiting and affecting livestock production on the Hopi Reservation is the lack of reliable water sources. Ranching has created a need to provide more access points to water sources for livestock. These water sources are usually springs, riparian areas, windmills and earth dams that have been either developed or installed specifically for livestock use. Many range units have too few wells, and rely on surface water impoundments. Areas surrounding watering points are overgrazed while areas further from water sources are over-rested. Other watering facilities are non-operational – windmills are broken, stock tanks are silted in and many water sources are infested with tamarisk (salt cedar).

The livestock industry, like other activities that utilize Hopi resources, should be managed according to Hopi land stewardship values to promote sustainable use of the range. One suggestion, intended to provide benefits to both farmers and ranchers, is to allow grazing use in the farming areas during the fallow period of late fall and winter. This idea could provide an opportunity for cooperation between the two groups, both because of the potential benefits for both groups, but also to avoid the potential disasters from this practice.

Gathering:

Hopi people gather plants and wildlife to meet subsistence and cultural needs. While most of the Hopi rangelands are used for grazing livestock, the moderate subsistence and growing ceremonial need for plants and animals also impact the Hopi environment. At a meeting for Hopi-Tewa women on subsistence gathering they indicated that over 30 percent of their fresh food is collected from Hopi land, rather than purchased from local markets. A significant number of people likewise reap economic benefits from utilizing plants and minerals in the production of arts and crafts such as Katsina dolls, baskets, and pottery.

The recent development of a commercial market for herbal healing and organic foods encourages unsustainable and excessive gathering practices of plants, mostly by non-Hopi people on Hopi land. Since these individuals have little stake in the plants growing back the next year, they may take the entire plant rather than specific parts; they may not leave enough to ensure that the plant grows back the following year. These individuals are operating an unlicensed, and therefore uncontrolled, business on the Hopi Reservation.

Construction

The construction sector on Hopi is dominated by publicly funded public works projects (roads, sanitation, health and other public facilities). A small amount of employment in construction trades rounds out the mix. In all, the construction sector on Hopi generates about 90 construction jobs and about \$2.1 million in pay on an ongoing, annual basis. Increasingly, construction projects funded by allocations to the villages have generated construction employment as well. Self-employed and small business entrepreneurs in the construction trades create a small but significant number of jobs in the construction sector of the Hopi Reservation economy. They operate in a variety of specialties: concrete, home improvement and repair, plumbing and heating, masonry and specialty solar installations.

A minerals inventory prepared in the 1950's identified sources of sand, gravel, clay, crusher rock, and building stone that could be developed. Agencies such as the Arizona Department of Transportation and the Bureau of Indian Affairs continue to import road materials from outside the reservation. Developing those local sources could provide jobs for tribal members as well as a source of community economic development projects.

### Hopi Artisans and the Crafts Industry -- Manufacturing

Artisans producing the traditional Hopi crafts remain the core of the manufacturing sector on the Hopi Reservation. Crafts production involves numerous individuals, many of whom pursue their vocation seriously but on a part-time basis and with limited access to markets, thereby reducing the “per job” pay yield of crafts work. Work in crafts production is sometimes combined with ranching, construction or other jobs. Other small manufacturing ventures, some rooted in Hopi tradition, round out the Reservation’s manufacturing sector.

Including 1,000-plus artisans – a conservative assumption about the number of individuals pursuing crafts production as a vocational commitment – the manufacturing sector generates approximately 1,075 jobs and generates an estimated \$5.7 million in pay.

In addition to the production of material by Artisans noted above, other on-going manufacturing activities produce garments, trophies and corn meal.

### Trade

Fifteen of 35 trade establishments on Hopi are galleries, comprising the other significant component of the crafts industry on the Reservation. Crafts galleries on the Reservation sell to both retail and a growing number of wholesale customers. There are also four restaurants, four fast food vendors and six small stores carrying various mixes of groceries, dry goods, hardware and prepared foods. These galleries, food service and general stores comprise the bulk of the Reservation’s trade sector, which, as a whole generates about 145 jobs and \$1.8 million in pay.

### Retail Trade Leakage:

With a reservation population of about 7,000 and estimated total reservation personal income of as much as \$40 million, there is considerable trade and services leakage off the reservation. Since rent or house mortgage payments are generally not required due to ownership patterns, the disposable personal income portion of this amount is larger than in off-reservation communities. A key step in improving economic conditions is to retain more of that income on the reservation through the provision of more competitive goods and services. While the entrepreneurial spirit seems to be alive and well among the Hopi people, the absence of a commercial development sector providing needed sites and buildings for lease or sale is a notable barrier to halting this trade leakage.

Recreation and Tourism:

The economic impact of the non-Hopi visitor to the Hopi Reservation is significant, estimated at somewhere between \$3.2—\$6 million/year. There is a significant impact upon cultural resources as well since there is a high motivation of the tourist to “experience” the Hopi Reservation.

An economic motivation exists on the part of many members of the Hopi community to promote tourism and tourism development on the reservation. The traditional Hopi crafts remain the core of the manufacturing sector on the Hopi Reservation. This produces approximately 1,075 jobs and generates about \$5.7 million in pay. Nearly half of all trade establishments are galleries and crafts shops.<sup>136</sup>

Overall the environment of the Hopi country does create a sense of a pristine and healthy environment. Woodlands provide scenic landscapes that add to positive visitor experiences. The potential exists for the development of commercial recreation activities such as hunting, bird watching, hiking and camping. The Keams Canyon reservoir on the Hopi Reservation is the only place in northern Arizona still being stocked for recreational fishing by the US Fish & Wildlife Service. No native fish have been identified on the Hopi Reservation. The Hopi dry-farming tradition is a unique form of agriculture that leads to the visitor’s desire to interact or purchase goods produced from this activity. There is potential for an organic food market to benefit sales of Hopi-raised produce, both on and off the Hopi reservation.

Some tour guides exploit the environment by taking their tour groups to un-permitted sites, making their own roads to get there, and causing erosion in the process. There is also the potential, however, that with increased visitation to major tourist sites, in a controlled manner, there may be a reduction in vandalism at these sites.

If the level of tourism is to increase on the Hopi Reservation, infrastructure to support those visitors must first be developed. Necessary facilities include public toilets, motels, laundromats, wastewater dumping, showers, etc. that will provide for individuals and groups who come to the Hopi Reservation.

---

136 Center for Applied Research. (1999). *An Economic Profile of the Hopi Reservation*. Prepared for the Hopi Tribe Office of Research and Planning.

Currently water conservation techniques are not applied in tourist-oriented businesses such as local restaurants, shops, and motels. An increase in tourism-supporting developments may exceed the water use of many Hopi homes that do not have indoor plumbing and septic systems. Most Hopi understand the need to use water conservatively; visitors are not educated about this need. This presents a conflict. Guidelines for tourism businesses to be water conservative may need to be created.

#### Transportation, Communications and Public Utilities

The TCU sector generates approximately 105 jobs and about \$2.2 million in pay. Village water and wastewater services provide the dominant part of this category. Some jobs that might otherwise fall in this category are also provided by tribal government (solid waste, transit) but are classified in the services section.

There is no tribal policy or regulation of road construction or maintenance activities. BIA maintenance regulations specify that roads be maintained, “as constructed.” Many roads are graded flat, some roads are angled into slopes, and other roads need ditches and culverts. Consequently, water pools or washes out these types of roads, resulting in high maintenance. The BIA prioritizes school bus routes for grading and only main non-system roads receive maintenance from the Hopi Tribe. Poorly maintained roads cause damage to the vehicles they use, and represent a significant cost to Hopi. The lack of alternative means of transport on the Reservation make roads an essential component of socio-economic and cultural life. Therefore, roads need to be managed in a manner that supports Hopi people’s sustainable use of their natural resources and protects these resources from adverse impact.

There is a lack of communication regarding transportation issues between tribal programs, and between tribal and village governments. In some cases affecting villages, Tribal Council-adopted road maintenance priorities are changed without village representatives’ knowledge or approval.

The development of local resources to help in road maintenance and construction efforts is viable. Use of sands and gravel for road construction and maintenance quarried locally could provide sufficient volume to help support a mining operation that could also provide materials for the construction industry locally. Individuals may also hire Abandoned Mine Land program grading equipment to grade roads although few people are aware of this opportunity. . The

public is generally unaware of which agency or organization is responsible for maintaining particular roads on the reservation.

The Hopi Senom Transit System Program is subsidized by the Arizona Department of Transportation to provide daily transportation for tribal employees across the reservation, including Flagstaff, to the tribal complex in Kykotsmovi. Services are provided on a fee basis.

#### Finance, Insurance and Real Estate

There is limited activity in the Finance sector, which generates about 25 jobs, and about \$300,000 in pay. Significant employers in this sector are the non-profits; the Hopi Foundation and the Hopi Credit Association.

#### Services

The Services sector generates 990 jobs and about \$26.1 million in pay, the largest payroll on the Reservation when taken as a whole. Eleven schools are the largest generator of services jobs. Grant schools and the BIA cover elementary and secondary education on Hopi. A variety of post-secondary institutions have programs on the Reservation. Because of its role providing direct services to the Reservation, the bulk of Hopi tribal government employment has been classified in the services sector. The IHS Health Clinic is the third substantial services job provider on the Hopi Reservation. Private-sector jobs are generated at establishments providing automotive repair, personal and business services (ie. Small restaurants, arts and crafts, convenience stores).