



Office of the Chairman
Timothy L. Nuvangyaoma

Office of the Vice Chairman
Clark W. Tenakhongva

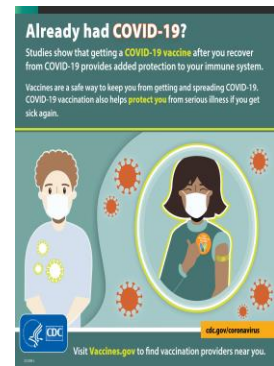
HOPI TRIBE – DEPARTMENT OF HEALTH & HUMAN SERVICES **COVID-19 EMERGENCY RESPONSE – August 12, 2021 REPORT**

KYKOTSMOVI, AZ – August 12, 2021

Get Vaccinated Even If You Have Had COVID-19

Get vaccinated to protect against serious illness.

You should get a COVID-19 vaccine regardless of whether you already had COVID-19. That's because experts do not yet know how long you are protected from getting sick again after recovering from COVID-19. Studies have shown that vaccination provides a strong boost in protection in people who have recovered from COVID-19. Learn more about [why getting vaccinated is a safer way to build protection](#) than getting infected.



If you were treated for COVID-19 with monoclonal antibodies or convalescent plasma, you should wait 90 days before getting a COVID-19 vaccine. Talk to your healthcare professional if you are unsure what treatments you received or if you have more questions about getting a COVID-19 vaccine.

If you or your child have a history of multisystem inflammatory syndrome in adults or children ([MIS-A](#) or [MIS-C](#)), consider delaying vaccination until you have recovered from being sick and for 90 days after the date of diagnosis of MIS-A or MIS-C. Learn more about the [clinical considerations](#) people with a history of MIS-A or MIS-C.

Experts are still learning more about how long vaccines protect against COVID-19 in real-world conditions. CDC will keep the public informed as new evidence becomes available.

Hopi Health Care Center – Community Vaccination Schedule

DATE	TIME	LOCATION
August 17	5:30-6 PM	Bacavi Village
	6:15-6:45 PM	Hotevilla Village
August 18	5:30-6 PM	Old Oraibi Village
	6:15-6:45 PM	Kykotsmovi Village

COVID-19 vaccines are available daily for those 12-years old and older.

Call (928) 737-6049/6081/6148 - Appointments preferred, but not required.

As of August 12, 2021 the United States now has approximately 36,125 million confirmed positive cases over 616,459 deaths reported.

Over 955,767 confirmed positive cases now exist in Arizona. Of those, close to 17,630 are in Navajo County alone.

The Hopi Health Care Center has tested over 10283 patients to date. Over 1,437 of those tests at Hopi Health Care Center came back positive with 1047 from Hopi Tribal members. Tuba City Regional Health Care Corporation reported 277 positives for Hopi Villages with a combined number of 1326*** positive Hopi Tribal members.

Hopi COVID-19 Reported Cases by Hopi Health Care Center Cases*
As of August 11, 2021

	Number Tested Today	Cumulative Number Positive	Cumulative Number Negative	Total Number in Process	Total Tested
	10	1437	8771	5	10,283

Number of Cases per Village	Reported by HHCC	Reported by Tuba City Regional Healthcare Corporation	Total
Kiqötsmovi	107	26	133
Orayvi	28		28
Polacca (Walpi-Sitsom'ovi-Tewa)	284	9	293+
Musangnuvi	96	2	98
Supawlavi	61	1	62+
Songöopavi	224	1	225+
Yuwelü-paki	12		12
Paaqavi	56		56
Hotvela	130	47	177
Keams Canyon	42	10	52
Flagstaff		1	1
Munqapi	1	180*	181*
Phoenix	1		2***
Winslow	4		5***
Prescott	1		1
TOTAL	1047	277	1326***

*Note: These data include newly added testing results from the Abbott ID NOW machine since April 20, 2020

** A total of 1326+ individuals who tested positive are members of the Hopi Tribe.

*** Data includes all state-wide data from other facilities such as Flagstaff, Winslow, Phoenix or other hospitals.
+ Includes Village member(s) retested positive.

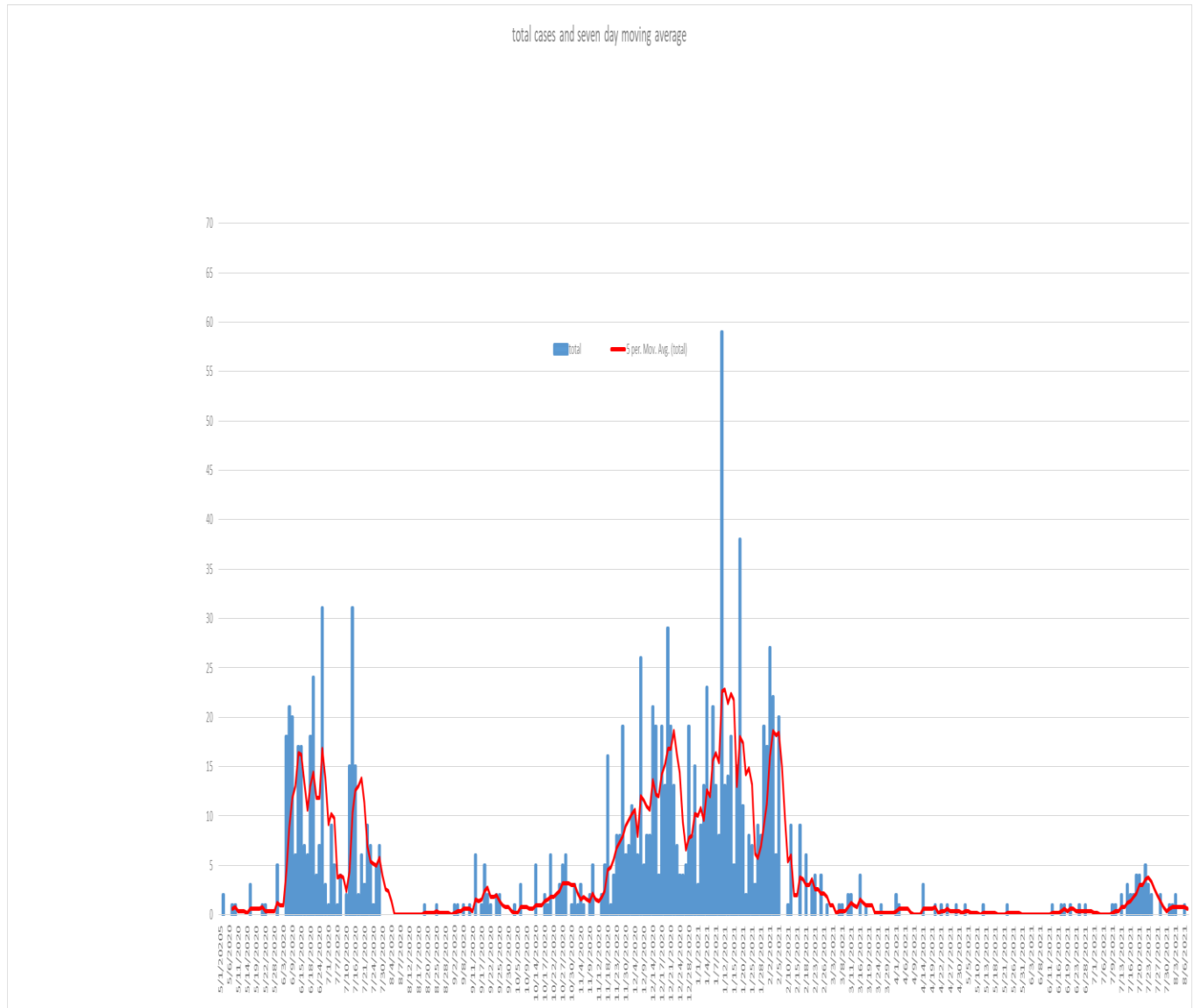
Prevention:

Watch for Symptoms - people with COVID-19 have had a wide range of symptoms reported – ranging from mild symptoms to severe illness. Symptoms may appear 2-10 days after exposure to the virus. Anyone can have mild to severe symptoms. People with these symptoms may have COVID-19:

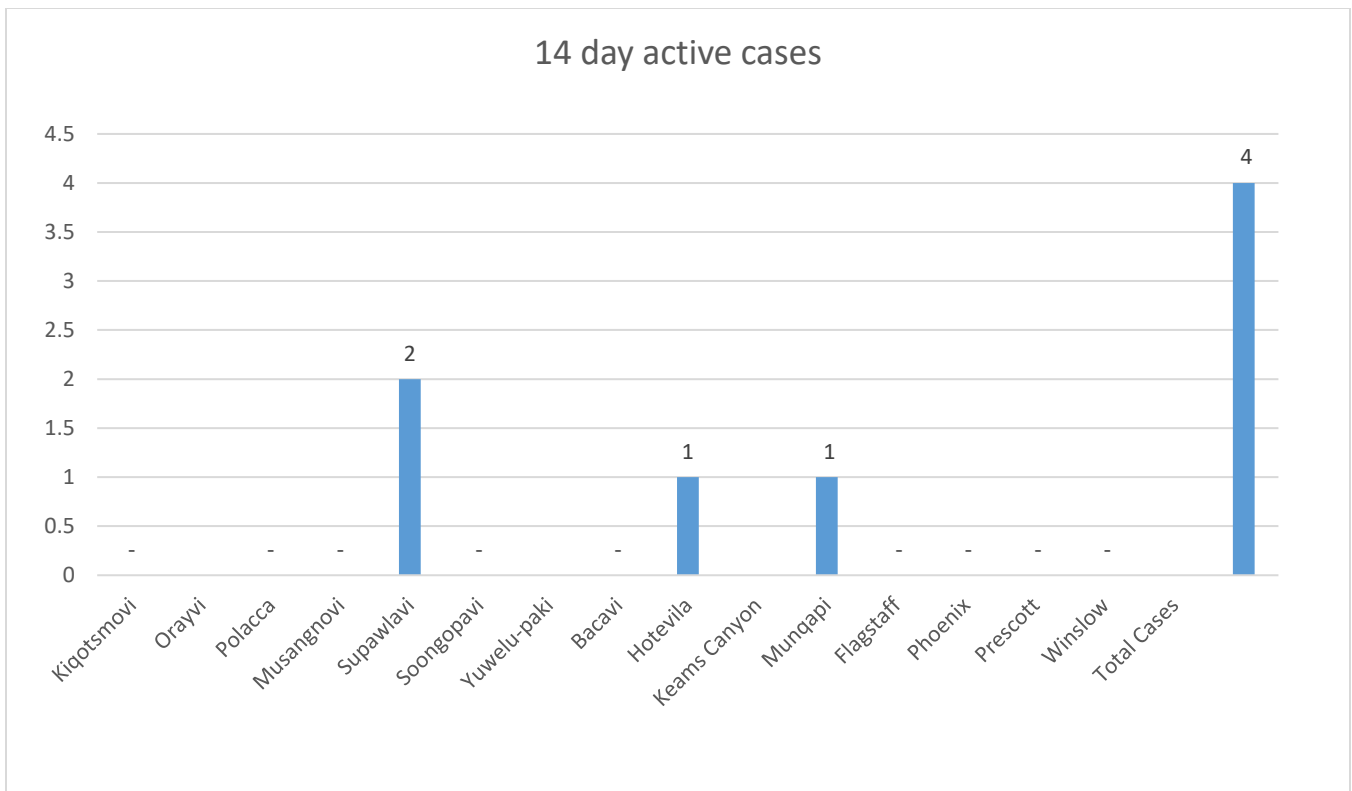
- Fever or chills
- Cough
- Shortness of breath or difficulty breathing
- Fatigue
- Muscle or body aches
- Headache
- New loss of taste or smell
- Sore throat
- Congestion or runny nose
- Nausea or vomiting
- Diarrhea

This list does not include all possible symptoms. CDC will continue to update this list as we learn more about COVID-19. Older adults and people who have severe underlying medical conditions like heart or lung disease or diabetes seem to be at higher risk for developing more serious complications from COVID-19 illness.

Education:



This graph demonstrates that cases per day stratified by village with a total case line and rolling seven-day line. This graph gives the total of positive cases for the day in a blue bar graph. The red line is the moving 7-day incidence average and demonstrates the general trend of Covid-19 of the community.



This graph demonstrates the active cases and is stratified by village. Currently there are **6** active cases that are defined as persons that have had a positive test result or symptom onset in the last 14 days. In this graph, the Total cases bar is all villages combined and should be excluded from the remainder of the graph. This graph is useful in isolating where the virus is most active at the current moment.

Vaccination Data as of August 12, 2021

Village	Population Estimate	Number Vaccinated*	Percent of population vaccinated	Vaccine Ranking Highest=1
Bacavi	337	197	58.45%	7
Hotevilla	871	514	59.01%	6
Kykotsmovi	709	535	75.45%	2
Mushongovi	679	293	43.15%	9
Moenkopi	1,146	710	61.95%	4
Orayvi	103	98	95.14%	1
Shungopavi	1,013	659	65.05%	3
Sipalwavi	371	202	54.44%	8
Polacca	1,908	1,129	59.17%	5
Total*	7137**	4,337	60.76%	

This Table looks at both cases per capita for the Tribe and persons that have received at a least one dose of the vaccine since the beginning of the pandemic. The village populations were calculated from the enrolment data from the tribe and is simply a rough estimate.

*Excludes the vaccines from Keams Canyon, Spider Mound, and those calculated as Second Mesa. The three groups combine for another 415 Hopi Tribal members who have received at least the first dose of the vaccine.

Total reservation percent vaccinated ~**66.58%** Eligible population vaccinated ** ~**73.82%**

**Eligible population is 6437, population older than 12

Village	Most recent case
1. Hotevilla	August 6 th
2. Sipalwavi	August 3 rd
3. Moenkopi	August 2 nd
4. Mishongnovi	July 28 th
5. Polacca	July 25 nd
6. Phoenix	July 23 rd
7. Bacavi	July 22 nd
8. Kykotsmovi	July 22 nd
9. Shungopavi	July 20 th
10. Winslow	July 15 th
11. Orayvi	July 13 th
12. Keams Canyon	April 14 th
13. Spider Mound	January 13 th

Color Code: Red- Less than one month since last case.

Blue- Between one and two months since the last case

Yellow- Between two and three months since last case

Green- Greater than three months since last case.

For questions or more information, please call The Hopi Tribe - Department of Health & Human Services at
(928) 734-3402